

Anti-alpha Adaptin antibody [AC1-M11] ab2807

★★★★★ [2 Abreviews](#) [11 References](#) [画像数 5](#)

製品の概要

製品名	Anti-alpha Adaptin antibody [AC1-M11]
製品の詳細	Mouse monoclonal [AC1-M11] to alpha Adaptin
由来種	Mouse
アプリケーション	適用あり: WB, ICC/IF, IHC-P, Flow Cyt
種交差性	交差種: Mouse, Rat, Human
免疫原	Full length native protein (purified) corresponding to Cow alpha Adaptin. Purified Bovine brain adaptor complexes
ポジティブ・コントロール	pig brain lysate and transfected COS cells.
特記事項	<p>The Life Science industry has been in the grips of a reproducibility crisis for a number of years. Abcam is leading the way in addressing this with our range of recombinant monoclonal antibodies and knockout edited cell lines for gold-standard validation. Please check that this product meets your needs before purchasing.</p> <p>If you have any questions, special requirements or concerns, please send us an inquiry and/or contact our Support team ahead of purchase. Recommended alternatives for this product can be found below, along with publications, customer reviews and Q&As</p>

製品の特性

製品の状態	Liquid
保存方法	Shipped at 4°C. Store at +4°C short term (1-2 weeks). Upon delivery aliquot. Store at -20°C or -80°C. Avoid freeze / thaw cycle.
バッファー	Preservative: 0.05% Sodium azide Constituent: PBS
精製度	Protein A purified
ポリ/モノ	モノクローナル
クローン名	AC1-M11
アイソタイプ	IgG2a

アプリケーション

The Abpromise guarantee Abpromise保証は、 次のテスト済みアプリケーションにおけるab2807の使用に適用されます
アプリケーションノートには、推奨の開始希釈率がありますが、適切な希釈率につきましてはご検討ください。

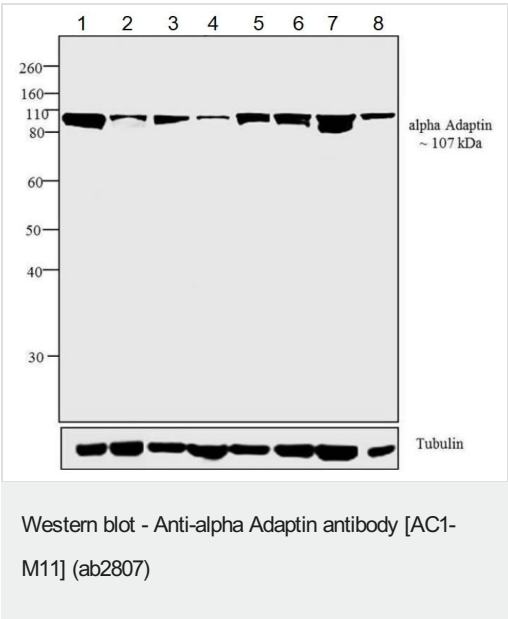
アプリケーション	Abreviews	特記事項
WB	★★★★★ (2)	Use a concentration of 2 µg/ml. Predicted molecular weight: 108 kDa.
ICC/IF		1/100.
IHC-P		1/20.
Flow Cyt		1/100. ab170191 - Mouse monoclonal IgG2a, is suitable for use as an isotype control with this antibody.

ターゲット情報

関連性 Clathrin mediated endocytosis is the pathway by which many receptors for nutrients and hormones are internalized to be recycled or down regulated. During formation of clathrin coated membranes, clathrin co assembles with heterotetrameric molecules known as assembly polypeptides (APs) or adaptors which form a layer of protein coat between the clathrin lattice and the membrane. There are two characterized adaptors AP1 and AP2. AP1 is associated with clathrin coated vesicles at the trans Golgi network and AP2 is associated with the endocytic clathrin coated vesicles at the plasma membrane and has been shown to specifically interact with Shc and EGF receptor. AP2 is composed of four subunits, two separate 100 kDa gene products with similar domain structures (alpha and beta adaptin) and a 50 and 17 kDa subunit. There are two alpha adaptin genes, alpha A and alpha C which have a tissue specific pattern of expression.

細胞内局在 Cytoplasmic

画像



All lanes : Anti-alpha Adaptin antibody [AC1-M11] (ab2807) at 2 µg/ml

- Lane 1 :** Rat brain tissue lysate
- Lane 2 :** SH-SY5Y (Human neuroblastoma cell line from bone marrow) whole cell lysate
- Lane 3 :** U-87 MG (Human glioblastoma-astrocytoma epithelial cell line) whole cell lysate
- Lane 4 :** COLO 205 (Human colon adenocarcinoma cell line) whole cell lysate
- Lane 5 :** PC-3 (Human prostate adenocarcinoma cell line) whole cell lysate
- Lane 6 :** MCF7 (Human breast adenocarcinoma cell line) whole cell lysate

Lane 7 : NIH/3T3 (Mouse embryonic fibroblast cell line) whole cell lysate

Lane 8 : A-431 (Human epidermoid carcinoma cell line) whole cell lysate

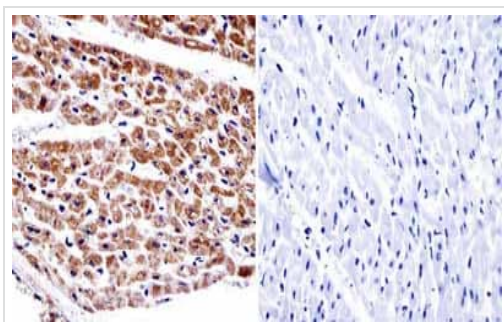
Lysates/proteins at 30 µg per lane.

Secondary

All lanes : Goat anti-Mouse IgG (H+L) Superclonal™ Secondary Antibody, HRP conjugate at 1/2500 dilution

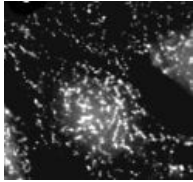
Predicted band size: 108 kDa

Known quantity of protein samples were electrophoresed using Novex® NuPAGE® 10 % Bis-Tris gel, XCell SureLock™ Electrophoresis System and Novex® Sharp Pre-Stained Protein Standard. Resolved proteins were then transferred onto a nitrocellulose membrane with Pierce™ Power Blotter System (22834). The membrane was probed with the relevant primary and secondary Antibody using iBind™ Flex Western Starter Kit. Chemiluminescent detection was performed using Pierce™ ECL Western Blotting Substrate.



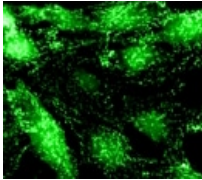
Immunohistochemistry (Formalin/PFA-fixed paraffin-embedded sections) - Anti-alpha Adaptin antibody [AC1-M11] (ab2807)

Immunohistochemistry was performed on normal biopsies of deparaffinized Human heart tissue. To expose target proteins heat induced antigen retrieval was performed using 10mM sodium citrate (pH6.0) buffer and microwaved for 8-15 minutes. Following antigen retrieval tissues were blocked in 3% BSA-PBS for 30 minutes at room temperature. Tissues were then probed at a dilution of 1:20 with a Mouse monoclonal antibody recognizing alpha Adaptin (ab2807) or without primary antibody (negative control) overnight at 4°C in a humidified chamber. Tissues were washed extensively with PBST and endogenous peroxidase activity was quenched with a peroxidase suppressor. Detection was performed using a biotin-conjugated secondary antibody and SA-HRP followed by colorimetric detection using DAB. Tissues were counterstained with hematoxylin and prepped for mounting.



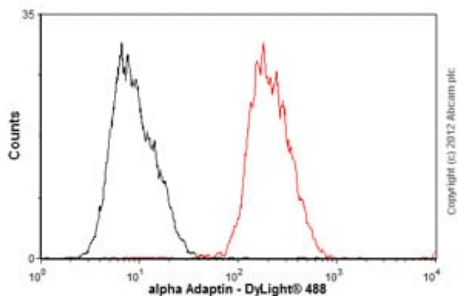
Immunocytochemistry/ Immunofluorescence - Anti-alpha Adaptin antibody [AC1-M11] (ab2807)

Immunolocalization of alpha-adaptin in NRK cells using ab2807.



Immunocytochemistry/ Immunofluorescence - Anti-alpha Adaptin antibody [AC1-M11] (ab2807)

Immunolocalization of alpha-adaptin in NRK cells using ab2807 (low power image of image 2).



Flow Cytometry - Anti-alpha Adaptin antibody [AC1-M11] (ab2807)

Overlay histogram showing HepG2 cells stained with ab2807 (red line). The cells were fixed with 80% methanol (5 min) and then permeabilized with 0.1% PBS-Tween for 20 min. The cells were then incubated in 1x PBS / 10% normal goat serum / 0.3M glycine to block non-specific protein-protein interactions followed by the antibody (ab2807, 1/100 dilution) for 30 min at 22°C. The secondary antibody used was DyLight® 488 goat anti-mouse IgG (H+L) ([ab96879](#)) at 1/500 dilution for 30 min at 22°C. Isotype control antibody (black line) was mouse IgG2a [ICIGG2A] ([ab91361](#), 2µg/1x10⁶ cells) used under the same conditions.

Acquisition of >5,000 events was performed. This antibody gave a positive signal in HepG2 cells fixed with 4% paraformaldehyde (10 min)/permeabilized with 0.1% PBS-Tween for 20 min used under the same conditions.

Please note: All products are "FOR RESEARCH USE ONLY. NOT FOR USE IN DIAGNOSTIC PROCEDURES"

Our Abpromise to you: Quality guaranteed and expert technical support

- Replacement or refund for products not performing as stated on the datasheet
- Valid for 12 months from date of delivery
- Response to your inquiry within 24 hours
- We provide support in Chinese, English, French, German, Japanese and Spanish
- Extensive multi-media technical resources to help you
- We investigate all quality concerns to ensure our products perform to the highest standards

If the product does not perform as described on this datasheet, we will offer a refund or replacement. For full details of the Abpromise, please visit <https://www.abcam.co.jp/abpromise> or contact our technical team.

Terms and conditions

- Guarantee only valid for products bought direct from Abcam or one of our authorized distributors