

Anti-Alpha 2 Antiplasmin antibody ab62770

★★★★★ [2 Abreviews](#) [1 References](#) [画像数 1](#)

製品の概要

| | |
|----------|---|
| 製品名 | Anti-Alpha 2 Antiplasmin antibody |
| 製品の詳細 | Rabbit polyclonal to Alpha 2 Antiplasmin |
| 由来種 | Rabbit |
| アプリケーション | 適用あり: WB |
| 種交差性 | 交差種: Human |
| 免疫原 | Full length protein corresponding to Human Alpha 2 Antiplasmin. Native protein |
| 特記事項 | <p>The Life Science industry has been in the grips of a reproducibility crisis for a number of years. Abcam is leading the way in addressing this with our range of recombinant monoclonal antibodies and knockout edited cell lines for gold-standard validation. Please check that this product meets your needs before purchasing.</p> <p>If you have any questions, special requirements or concerns, please send us an inquiry and/or contact our Support team ahead of purchase. Recommended alternatives for this product can be found below, along with publications, customer reviews and Q&As</p> |

製品の特性

| | |
|----------|---|
| 製品の状態 | Liquid |
| 保存方法 | Shipped at 4°C. Upon delivery aliquot. Store at -80°C. Avoid freeze / thaw cycle. |
| バッファー | Constituents: 0.82% Sodium phosphate, 0.0292% EDTA, 0.58% Sodium chloride |
| 精製度 | Protein A purified |
| 特記事項(精製) | >98% pure (SDS-PAGE). |
| ポリ/モノ | ポリクローナル |
| アイソタイプ | IgG |

アプリケーション

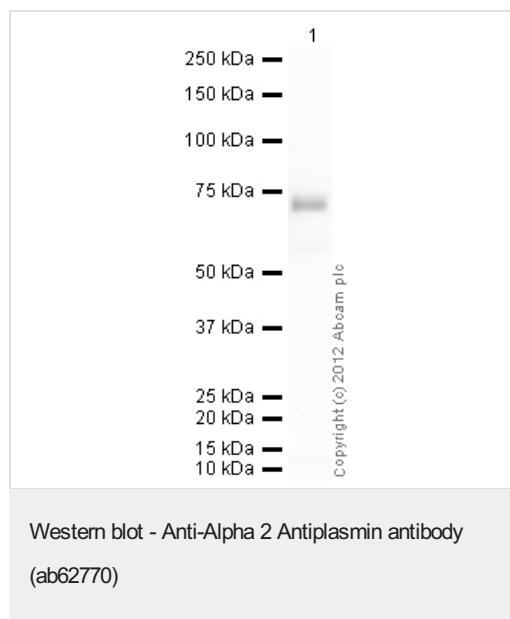
The Abpromise guarantee **Abpromise保証は、** 次のテスト済みアプリケーションにおけるab62770の使用に適用されます
 アプリケーションノートには、推奨の開始希釈率がありますが、適切な希釈率につきましてはご検討ください。

| アプリケーション | Abreviews | 特記事項 |
|----------|-----------|---|
| WB | ★★★★★ (1) | Use a concentration of 1 - 5 µg/ml. Predicted molecular weight: 55 kDa. |

ターゲット情報

| | |
|-------|---|
| 機能 | Serine protease inhibitor. The major targets of this inhibitor are plasmin and trypsin, but it also inactivates matriptase-3/TMPRSS7 and chymotrypsin. |
| 組織特異性 | Expressed by the liver and secreted in plasma. |
| 関連疾患 | Defects in SERPINF2 are the cause of alpha-2-plasmin inhibitor deficiency (APLID) [MIM:262850]. APLID is an autosomal recessive disorder resulting in severe hemorrhagic diathesis. |
| 配列類似性 | Belongs to the serpin family. |
| 細胞内局在 | Secreted. |

画像



Please note: All products are "FOR RESEARCH USE ONLY. NOT FOR USE IN DIAGNOSTIC PROCEDURES"

Our Abpromise to you: Quality guaranteed and expert technical support

- Replacement or refund for products not performing as stated on the datasheet
- Valid for 12 months from date of delivery
- Response to your inquiry within 24 hours
- We provide support in Chinese, English, French, German, Japanese and Spanish
- Extensive multi-media technical resources to help you

- We investigate all quality concerns to ensure our products perform to the highest standards

If the product does not perform as described on this datasheet, we will offer a refund or replacement. For full details of the Abpromise, please visit <https://www.abcam.co.jp/abpromise> or contact our technical team.

Terms and conditions

- Guarantee only valid for products bought direct from Abcam or one of our authorized distributors