


Anti-alpha 1 Sodium Potassium ATPase antibody [464.6] ab7671

★★★★★ [41 Abreviews](#) [331 References](#) [画像数 7](#)

製品の概要

製品名	Anti-alpha 1 Sodium Potassium ATPase antibody [464.6]
製品の詳細	Mouse monoclonal [464.6] to alpha 1 Sodium Potassium ATPase
由来種	Mouse
アプリケーション	適用あり: ICC/IF, IHC-P, WB
種交差性	交差種: Mouse, Rat, Rabbit, Human, Pig 交差が予測される動物種: Sheep, Dog, Xenopus laevis, Monkey 
免疫原	Full length native protein (purified). This information is proprietary to Abcam and/or its suppliers.
ポジティブ・コントロール	This antibody gave a positive signal in the following tissue lysates: human kidney, rabbit heart, human brain and human brain membrane. This antibody also gave a positive signal in Porcine proximal tubule lysate.
特記事項	<p>This antibody clone [464.6] is manufactured by Abcam.</p> <p>If you require this antibody in a different buffer formulation or a different conjugate for your experiments, please contact orders@abcam.com or you can find further information here.</p> <p>The Life Science industry has been in the grips of a reproducibility crisis for a number of years. Abcam is leading the way in addressing this with our range of recombinant monoclonal antibodies and knockout edited cell lines for gold-standard validation. Please check that this product meets your needs before purchasing.</p> <p>If you have any questions, special requirements or concerns, please send us an inquiry and/or contact our Support team ahead of purchase. Recommended alternatives for this product can be found below, along with publications, customer reviews and Q&As</p>

製品の特性

製品の状態	Liquid
保存方法	Shipped at 4°C. Store at +4°C short term (1-2 weeks). Upon delivery aliquot. Store at -20°C. Avoid freeze / thaw cycle.
バッファー	pH: 7.40 Preservative: 0.02% Sodium azide Constituents: PBS, 6.97% L-Arginine
	Some batches contain 6.97% L-Arginine as a stabilizing agent. For lot-specific buffer information,

please contact our Scientific Support team.

精製度	Protein G purified
ポリ/モノ	モノクローナル
クローン名	464.6
アイソタイプ	IgG1
軽鎖の種類	kappa

アプリケーション

The Abpromise guarantee **Abpromise保証は、次のテスト済みアプリケーションにおけるab7671の使用に適用されます**

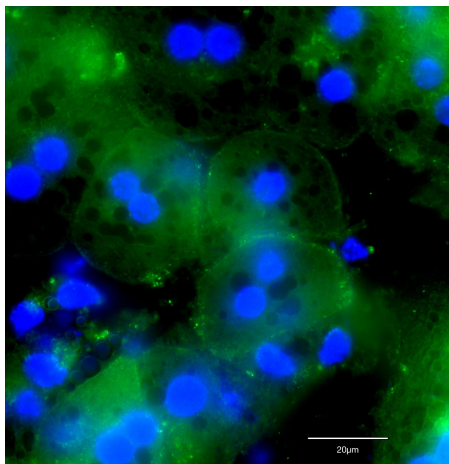
アプリケーションノートには、推奨の開始希釈率がありますが、適切な希釈率につきましてはご検討ください。

アプリケーション	Abreviews	特記事項
ICC/IF	★★★★★ (10)	Use a concentration of 1 - 10 µg/ml. We recommend Methanol fixation and Goat Anti-Mouse IgG H&L (Alexa Fluor® 555) preadsorbed (ab150118) secondary antibody .
IHC-P	★★★★★ (5)	Use a concentration of 5 µg/ml.
WB	★★★★★ (23)	Use a concentration of 1 - 5 µg/ml. Predicted molecular weight: 112 kDa. Abcam recommends using 5% BSA as the blocking agent.

ターゲット情報

機能	This is the catalytic component of the active enzyme, which catalyzes the hydrolysis of ATP coupled with the exchange of sodium and potassium ions across the plasma membrane. This action creates the electrochemical gradient of sodium and potassium ions, providing the energy for active transport of various nutrients.
配列類似性	Belongs to the cation transport ATPase (P-type) (TC 3.A.3) family. Type IIC subfamily.
翻訳後修飾	Phosphorylation on Tyr-10 modulates pumping activity.
細胞内局在	Cell membrane. Melanosome. Identified by mass spectrometry in melanosome fractions from stage I to stage IV.

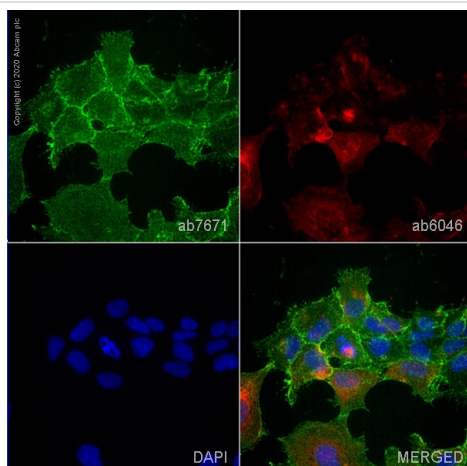
画像



Immunocytochemistry - Anti-alpha 1 Sodium Potassium ATPase antibody [464.6] (ab7671)

This image is courtesy of an Abreview submitted by Armen Petrosyan

Immunocytochemistry analysis of formaldehyde-fixed mouse hepatocytes permeabilized with 0.2% Triton X-100 in PBS staining with ab7671 at 1/50 dilution. Secondary antibody was Alexa Fluor™ 488 Donkey anti-Ms. Samples were incubated with the primary antibody with 1% donkey serum in PBST for 3 hours at 22°C. Blocking was done using 1% donkey serum in PBST for 1 hour at 22°C.

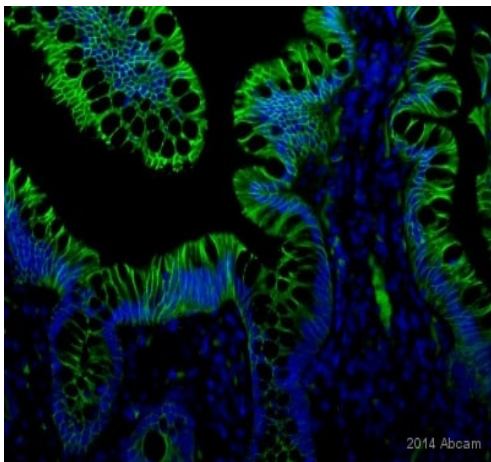


Immunocytochemistry/ Immunofluorescence - Anti-alpha 1 Sodium Potassium ATPase antibody [464.6] (ab7671)

ab7671 staining alpha 1 Sodium Potassium ATPase in Hek293 cells. The cells were fixed with 100% methanol (5 min), permeabilized with 0.1% PBS-Tween for 5 minutes and then blocked with 1% BSA/10% normal goat serum/0.3M glycine in 0.1%PBS-Tween for 1h. The cells were then incubated overnight at 4°C with ab7671 at 1µg/ml and **ab6046**, Rabbit polyclonal to beta Tubulin - Loading Control. Cells were then incubated with **ab150117**, Goat polyclonal Secondary Antibody to Mouse IgG H&L (Alexa Fluor® 488) preadsorbed at 1/1000 dilution (shown in green) and **ab150080**, Goat polyclonal Secondary Antibody to Rabbit IgG - H&L (Alexa Fluor® 594) at 1/1000 dilution (shown in pseudocolour red). Nuclear DNA was labelled with DAPI (shown in blue).

Also suitable in cells fixed with 100% methanol (5 min).

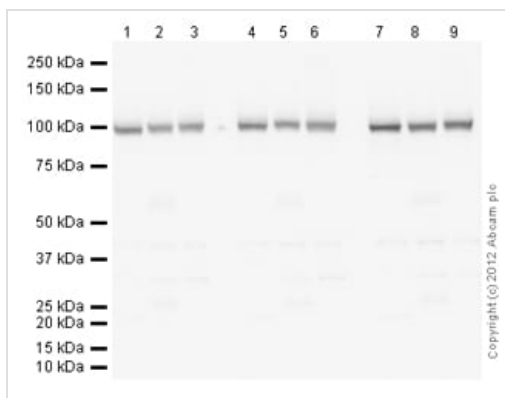
Image was acquired with a high-content analyser (Operetta CLS, Perkin Elmer) and a single confocal section is shown.



Immunohistochemistry (Formalin/PFA-fixed paraffin-embedded sections) - Anti-alpha 1 Sodium Potassium ATPase antibody [464.6] (ab7671)

This image is courtesy of an Abreview submitted by Anne Sailer

ab7671 staining alpha 1 Sodium Potassium ATPase in human formaldehyde tissue sections by Immunohistochemistry (IHC-P - paraformaldehyde-fixed, paraffin-embedded sections). Tissue was fixed with formaldehyde and blocked with 5% BSA for 12 hours at 4°C; antigen retrieval was by heat mediation in a buffer pH 9. Samples were incubated with primary antibody (5µg/ml in 5% BSA) for 16 hours at 4°C. An Alexa Fluor® 488-conjugated donkey anti-mouse IgG polyclonal (1/1000) was used as the secondary antibody.



Western blot - Anti-alpha 1 Sodium Potassium ATPase antibody [464.6] (ab7671)

Lanes 1-3 : Anti-alpha 1 Sodium Potassium ATPase antibody [464.6] (ab7671) at 1 µg/ml

Lanes 4-6 : Anti-alpha 1 Sodium Potassium ATPase antibody [464.6] (ab7671) at 2 µg/ml

Lanes 7-9 : Anti-alpha 1 Sodium Potassium ATPase antibody [464.6] (ab7671) at 5 µg/ml

Lanes 1 & 4 & 7 : Human brain tissue lysate - total protein ([ab29466](#))

Lanes 2 & 5 & 8 : Brain (Mouse) Tissue Lysate ([ab27253](#))

Lanes 3 & 6 & 9 : Brain (Rat) Tissue Lysate ([ab7942](#))

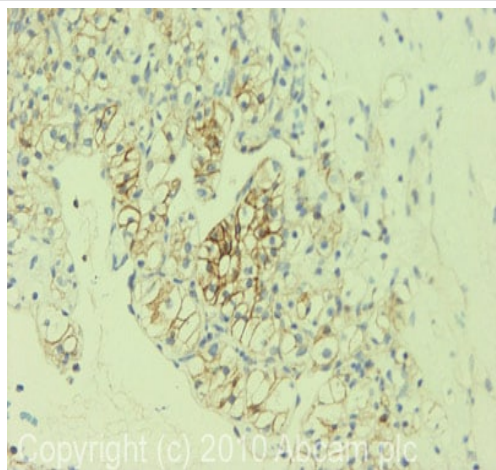
Lysates/proteins at 20 µg per lane.

Developed using the ECL technique.

Performed under reducing conditions.

Predicted band size: 112 kDa

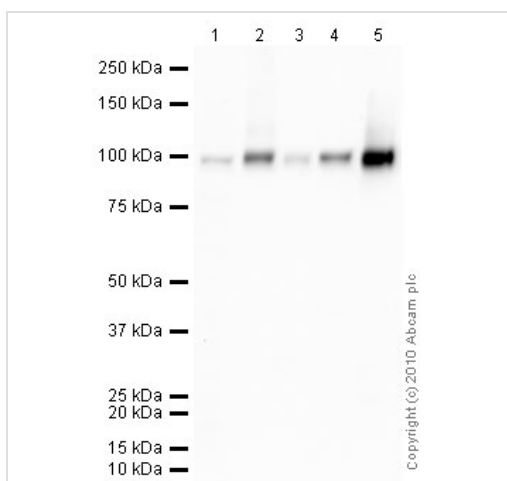
Exposure time: 3 minutes



Immunohistochemistry (Formalin/PFA-fixed paraffin-embedded sections) - Anti-alpha 1 Sodium Potassium ATPase antibody [464.6] (ab7671)

IHC image of Ab7671 staining in Human Kidney Carcinoma formalin fixed paraffin embedded tissue section, performed on a Leica Bond™ system using the standard protocol F. The section was pre-treated using heat mediated antigen retrieval with sodium citrate buffer (pH6, epitope retrieval solution 1) for 20 mins. The section was then incubated with Ab7671, 5µg/ml, for 15 mins at room temperature and detected using an HRP conjugated compact polymer system. DAB was used as the chromogen. The section was then counterstained with haematoxylin and mounted with DPX.

For other IHC staining systems (automated and non-automated) customers should optimize variable parameters such as antigen retrieval conditions, primary antibody concentration and antibody incubation times.



Western blot - Anti-alpha 1 Sodium Potassium ATPase antibody [464.6] (ab7671)

All lanes : alpha 1 Sodium Potassium ATPase antibody [464.6] - Plasma Membrane Marker at 10 µg/ml

Lane 1 : HEK293 (Human embryonic kidney cell line) Whole Cell Lysate

Lane 2 : Human kidney tissue lysate - total protein ([ab30203](#))

Lane 3 : Heart (Rabbit) Whole Cell Lysate - normal tissue ([ab29072](#))

Lane 4 : Human brain tissue lysate - total protein ([ab29466](#))

Lane 5 : Brain (Human) Membrane Lysate - adult normal tissue

Lysates/proteins at 20 µg per lane.

Secondary

All lanes : Goat polyclonal to Mouse IgG - H&L - Pre-Adsorbed (HRP) at 1/3000 dilution

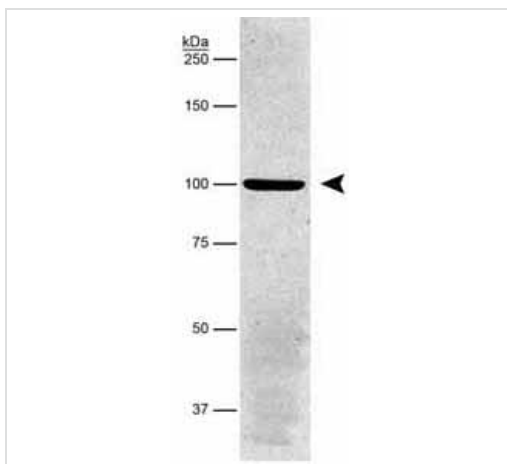
Developed using the ECL technique.

Performed under reducing conditions.

Predicted band size: 112 kDa

Observed band size: 100 kDa

Exposure time: 3 minutes



Western blot - Anti-alpha 1 Sodium Potassium ATPase antibody [464.6] (ab7671)

Anti-alpha 1 Sodium Potassium ATPase antibody [464.6] (ab7671)
at 1/5000 dilution + Porcine proximal tubule lysate

Predicted band size: 112 kDa

Western blot analysis detecting Na, K-ATP-ase (alpha) in porcine proximal tubule protein, using Ab7671. Band is at 112 kDa.

Please note: All products are "FOR RESEARCH USE ONLY. NOT FOR USE IN DIAGNOSTIC PROCEDURES"

Our Abpromise to you: Quality guaranteed and expert technical support

- Replacement or refund for products not performing as stated on the datasheet
- Valid for 12 months from date of delivery
- Response to your inquiry within 24 hours
- We provide support in Chinese, English, French, German, Japanese and Spanish
- Extensive multi-media technical resources to help you
- We investigate all quality concerns to ensure our products perform to the highest standards

If the product does not perform as described on this datasheet, we will offer a refund or replacement. For full details of the Abpromise, please visit <https://www.abcam.co.jp/abpromise> or contact our technical team.

Terms and conditions

- Guarantee only valid for products bought direct from Abcam or one of our authorized distributors