

# Anti-alpha 1 Fetoprotein antibody [RM1011] ab284388

リコンビナント **RabMAb**

## 1 References 画像数 10

### 製品の概要

製品名	Anti-alpha 1 Fetoprotein antibody [RM1011]
製品の詳細	Rabbit recombinant multiclonal [RM1011] to alpha 1 Fetoprotein
由来種	Rabbit
アプリケーション	<b>適用あり:</b> IHC-P, Indirect ELISA, IP, ICC, Flow Cyt, WB
種交差性	<b>交差種:</b> Mouse, Rat, Human
免疫原	<p><b>This product was produced with the following immunogens:</b></p> <p>Recombinant fragment. This information is proprietary to Abcam and/or its suppliers.</p> <p>Recombinant fragment. This information is proprietary to Abcam and/or its suppliers.</p>
ポジティブ・コントロール	WB: HepG2, Huh7, Hepa1-6, Hepa1-6 treated with 300ng/ml BFA for 24h, and Mouse placenta, Rat placenta lysates. IHC-P: Human hepatic carcinoma. ICC: HepG2 cells, & Hepa1-6 cells treated with Brefeldin A (300 ng/ml) for 24 h. Flow Cyt: HepG2, & Hepa1-6 cells treated with 300ng/ml BFA for 24h. IP: HepG2 cells.
特記事項	<p>IHC suitable for Human only.</p> <p>This product is a recombinant monoclonal antibody, which offers several advantages including:</p> <ul style="list-style-type: none"> <li>- High batch-to-batch consistency and reproducibility</li> <li>- Improved sensitivity and specificity</li> <li>- Long-term security of supply</li> <li>- Animal-free production</li> </ul> <p>For more information <a href="#">see here</a>.</p> <p>Our RabMAb<sup>®</sup> technology is a patented hybridoma-based technology for making rabbit monoclonal antibodies. For details on our patents, please refer to <a href="#">RabMAb<sup>®</sup> patents</a>.</p>

### 製品の特性

製品の状態	Liquid
保存方法	Shipped at 4°C. Store at +4°C short term (1-2 weeks). Upon delivery aliquot. Store at -20°C long term. Avoid freeze / thaw cycle.
バッファー	<p>pH: 7.2</p> <p>Preservative: 0.01% Sodium azide</p>

	Constituents: 59% PBS, 40% Glycerol (glycerin, glycerine), 0.05% BSA
精製度	Protein A purified
ポリ/モノ	Recombinant Multiclonal
クローン名	RM1011
アイソタイプ	IgG

## アプリケーション

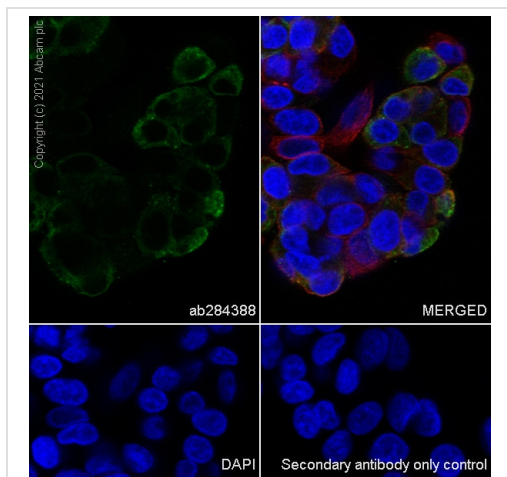
**The Abpromise guarantee**      **Abpromise保証は、次のテスト済みアプリケーションにおけるab284388の使用に適用されます**  
 アプリケーションノートには、推奨の開始希釈率がありますが、適切な希釈率につきましてはご検討ください。

アプリケーション	Abreviews	特記事項
IHC-P		1/2000. Perform heat mediated antigen retrieval with Tris/EDTA buffer pH 9.0 before commencing with IHC staining protocol. IHC suitable for Human only.
Indirect ELISA		Use at an assay dependent concentration.
IP		1/30.
ICC		1/50.
Flow Cyt		1/500.
WB		1/1000. Predicted molecular weight: 68 kDa.

## ターゲット情報

機能	Binds copper, nickel, and fatty acids as well as, and bilirubin less well than, serum albumin. Only a small percentage (less than 2%) of the human AFP shows estrogen-binding properties.
組織特異性	Plasma. Synthesized by the fetal liver and yolk sac.
配列類似性	Belongs to the ALB/AFP/VDB family. Contains 3 albumin domains.
発生段階	Occurs in the plasma of fetuses more than 4 weeks old, reaches the highest levels during the 12th-16th week of gestation, and drops to trace amounts after birth. The serum level in adults is usually less than 40 ng/ml. AFP occurs also at high levels in the plasma and ascitic fluid of adults with hepatoma.
翻訳後修飾	Independent studies suggest heterogeneity of the N-terminal sequence of the mature protein and of the cleavage site of the signal sequence. Sulfated.
細胞内局在	Secreted.

## 画像



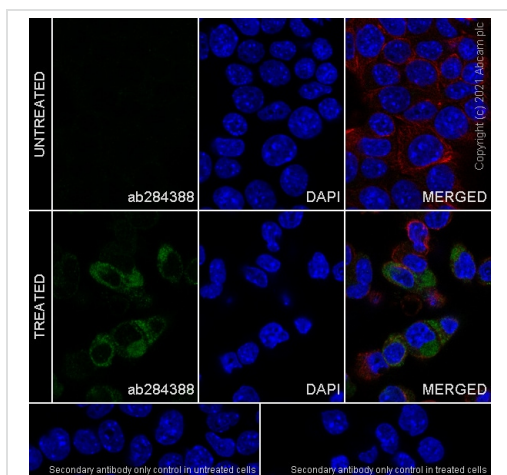
Immunocytochemistry - Anti-alpha 1 Fetoprotein antibody [RM1011] (ab284388)

This data was developed using ab284388, the same antibody clone in a different buffer formulation.

Immunofluorescent analysis of 4% Paraformaldehyde-fixed, 0.1% TritonX-100 permeabilized HepG2 cells labelling alpha 1 Fetoprotein with ab284388 at 1/50 dilution, followed by [ab150077](#) Goat Anti-Rabbit IgG H&L (Alexa Fluor® 488) antibody at 1/1000 (2µg/mL) dilution (Green). [ab195889](#) Anti-alpha Tubulin mouse monoclonal antibody - Microtubule Marker (Alexa Fluor® 594) was used to counterstain tubulin at 1/200 2.5µg/mL dilution (Red). The Nuclear counterstain was DAPI (Blue).

Confocal image showing cytoplasmic staining in HepG2 cells is observed.

Secondary antibody only control: Secondary antibody is [ab150077](#) Goat Anti-Rabbit IgG H&L (Alexa Fluor® 488) at 1/1000 (2µg/mL) dilution.

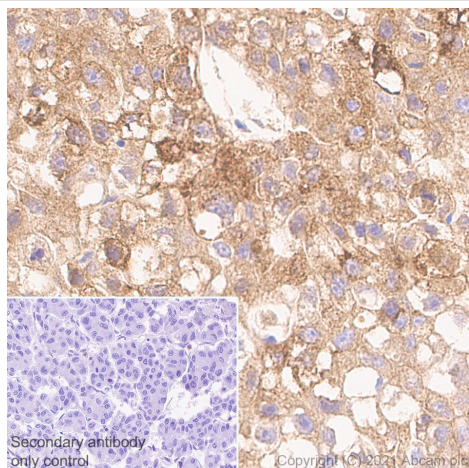


Immunocytochemistry - Anti-alpha 1 Fetoprotein antibody [RM1011] (ab284388)

Immunofluorescent analysis of 4% Paraformaldehyde-fixed, 0.1% TritonX-100 permeabilized Hepa1-6 cells labelling alpha 1 Fetoprotein with ab284388 at 1/50 dilution, followed by [ab150081](#) Goat Anti-Rabbit IgG H&L (Alexa Fluor® 488) preadsorbed antibody at 1/1000 2µg/mL dilution (Green). [ab195889](#) Anti-alpha Tubulin mouse monoclonal antibody - Microtubule Marker (Alexa Fluor® 594) was used to counterstain tubulin at 1/200 (2.5µg/mL) dilution (Red). The Nuclear counterstain was DAPI (Blue).

Confocal image showing increased cytoplasmic staining in Hepa1-6 cells treated with Brefeldin A (300 ng/ml) for 24 h is observed.

Secondary antibody only control: Secondary antibody is [ab150081](#) Goat Anti-Rabbit IgG H&L (Alexa Fluor® 488) preadsorbed at 1/1000 (2µg/mL) dilution.

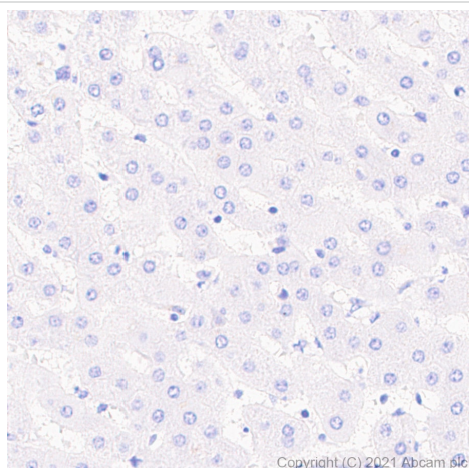


Immunohistochemistry (Formalin/PFA-fixed paraffin-embedded sections) - Anti-alpha 1 Fetoprotein antibody [RM1011] (ab284388)

Immunohistochemical analysis of paraffin-embedded Human hepatic carcinoma tissue labelling alpha 1 Fetoprotein with ab284388 at 1/2000 (0.231 µg/mL) followed by a ready to use LeicaDS9800 (Bond™ Polymer Refine Detection). Positive staining on human hepatic carcinoma. The section was incubated with ab284388 for 30 mins at room temperature. The immunostaining was performed on a Leica Biosystems BOND® RX instrument Counterstained with Hematoxylin.

Secondary antibody only control: Secondary antibody is a ready to use LeicaDS9800 (Bond™ Polymer Refine Detection).

Heat mediated antigen retrieval with Tris-EDTA buffer (pH 9.0, epitope retrieval solution2) for 20 mins.



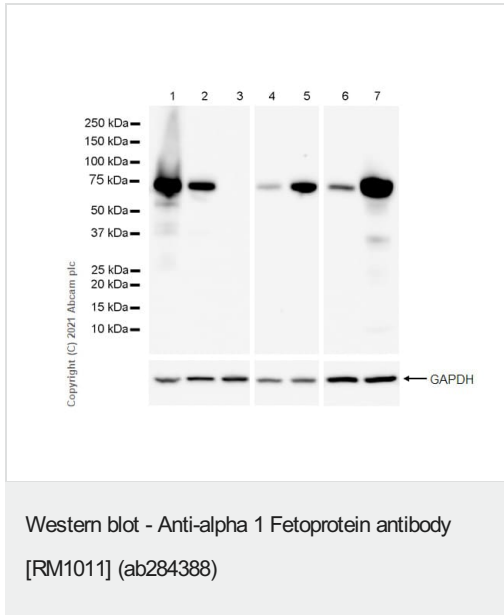
Immunohistochemistry (Formalin/PFA-fixed paraffin-embedded sections) - Anti-alpha 1 Fetoprotein antibody [RM1011] (ab284388)

**Negative control:** No staining on human liver.

Immunohistochemical analysis of paraffin-embedded Human liver tissue labelling alpha 1 Fetoprotein with ab284388 at 1/2000 (0.231 µg/mL) followed by a ready to use LeicaDS9800 (Bond™ Polymer Refine Detection). The section was incubated with ab284388 for 30 mins at room temperature. The immunostaining was performed on a Leica Biosystems BOND® RX instrument Counterstained with Hematoxylin.

Secondary antibody only control: Secondary antibody is a ready to use LeicaDS9800 (Bond™ Polymer Refine Detection).

Heat mediated antigen retrieval with Tris-EDTA buffer (pH 9.0, epitope retrieval solution2) for 20 mins.



**All lanes :** Anti-alpha 1 Fetoprotein antibody [RM1011] (ab284388)  
at 1/1000 dilution

**Lane 1 :** HepG2 (Human hepatocellular carcinoma epithelial cell)  
whole cell lysate

**Lane 2 :** Huh7 (Human hepatocellular carcinoma epithelial cell)  
whole cell lysate

**Lane 3 :** MDA-MB-231 (Human breast adenocarcinoma epithelial cell) whole cell lysate

**Lane 4 :** Hepa1-6 (Mouse hepatoma epithelial cell) whole cell lysate

**Lane 5 :** Hepa1-6 treated with 300ng/ml BFA for 24h whole cell lysate

**Lane 6 :** Mouse placenta lysate

**Lane 7 :** Rat placenta lysate

Lysates/proteins at 20 µg per lane.

#### Secondary

**All lanes :** Goat Anti-Rabbit IgG, (H+L), Peroxidase conjugated ([ab97051](#)) at 1/100000 dilution

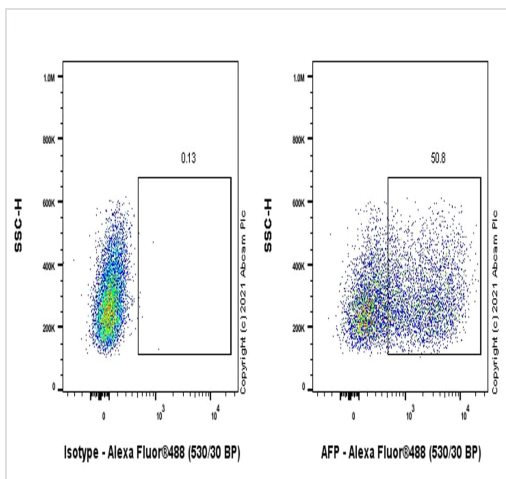
**Predicted band size:** 68 kDa

**Observed band size:** 68 kDa

Blocking and diluting buffer and concentration: 5% NFDM/TBST

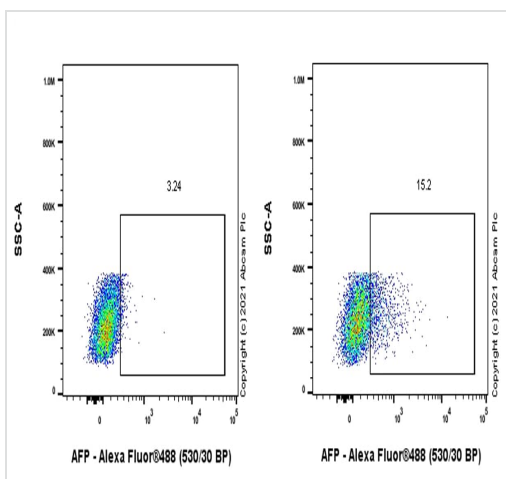
**Negative control:** MDA-MB-231.

Exposure time: Lane 4-5: 26 seconds ; Others: 5 seconds



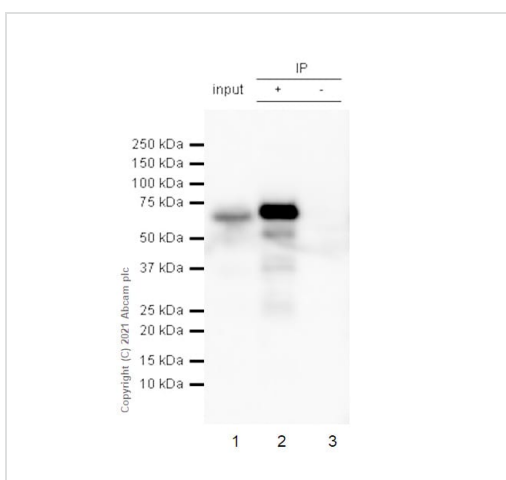
Flow Cytometry - Anti-alpha 1 Fetoprotein antibody  
[RM1011] (ab284388)

Flow cytometric analysis of 4% paraformaldehyde fixed 90% methanol permeabilized HepG2 (Human hepatocellular carcinoma epithelial cell) cells labelling alpha 1 Fetoprotein with ab284388 at 1/500 dilution Right (Red) compared with a Rabbit monoclonal IgG (**ab172730**) / Left isotype control. A Goat Anti-Rabbit IgG (Alexa Fluor® 488, **ab150081**) at 1/2000 dilution was used as the secondary antibody.



Flow Cytometry - Anti-alpha 1 Fetoprotein antibody  
[RM1011] (ab284388)

Flow cytometric analysis of 4% paraformaldehyde fixed 0.1% Tween-20 permeabilized Hepa1-6 (Mouse hepatoma epithelial cell) treated with 300ng/ml BFA for 24h (Right) / Untreated control (Left) cells labelling alpha 1 Fetoprotein with ab284388 at 1/500 dilution. A Goat Anti-Rabbit IgG (Alexa Fluor® 488, **ab150081**) at 1/2000 dilution was used as the secondary antibody.



Immunoprecipitation - Anti-alpha 1 Fetoprotein  
antibody [RM1011] (ab284388)

alpha 1 Fetoprotein was immunoprecipitated from 0.35 mg HepG2 (Human hepatocellular carcinoma epithelial cell) whole cell lysate 10ug with ab284388 at 1/30 dilution (2 µg in 0.35mg lysates). Western blot was performed on the immunoprecipitate using ab284388 at 1/1000 dilution. VeriBlot for IP Detection Reagent (HRP)(**ab131366**) was used at 1/5000 dilution.

**Lane 1:** HepG2 (Human hepatocellular carcinoma epithelial cell) whole cell lysate 10ug

**Lane 2:** abab284388 IP in HepG2 whole cell lysate

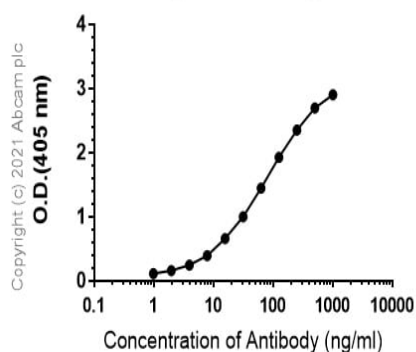
**Lane 3:** Rabbit monoclonal IgG (**ab172730**) instead of ab284388 in HepG2 whole cell lysate

Blocking and dilution buffer and concentration: 5% NFDM/TBST.

Exposure time: 3 seconds



### Indirect ELISA antibody dose-response curve antigen at 1000 ng/ml



ELISA - Anti-alpha 1 Fetoprotein antibody [RM1011]  
(ab284388)

ELISA using ab284388 at varying antibody concentrations and antigen concentration at 1000 ng/ml. An Alkaline Phosphatase-conjugated AffiniPure Goat Anti-Rabbit IgG (H+L) (1/2500) was used as the secondary antibody.

### Why choose a recombinant antibody?



**Research with  
confidence**  
Consistent and  
reproducible results



**Long-term and  
scalable supply**  
Recombinant  
technology



**Success from the  
first experiment**  
Confirmed  
specificity



**Ethical standards  
compliant**  
Animal-free  
production

Anti-alpha 1 Fetoprotein antibody [RM1011]  
(ab284388)

**Please note:** All products are "FOR RESEARCH USE ONLY. NOT FOR USE IN DIAGNOSTIC PROCEDURES"

### Our Abpromise to you: Quality guaranteed and expert technical support

- Replacement or refund for products not performing as stated on the datasheet
- Valid for 12 months from date of delivery
- Response to your inquiry within 24 hours
- We provide support in Chinese, English, French, German, Japanese and Spanish
- Extensive multi-media technical resources to help you
- We investigate all quality concerns to ensure our products perform to the highest standards

If the product does not perform as described on this datasheet, we will offer a refund or replacement. For full details of the Abpromise, please visit <https://www.abcam.co.jp/abpromise> or contact our technical team.

## Terms and conditions

---

- Guarantee only valid for products bought direct from Abcam or one of our authorized distributors