

Anti-alpha 1 Fetoprotein antibody [EPR19240-133] ab199054

リコンビナント RabMAb

1 References [画像数 4](#)

製品の概要

製品名	Anti-alpha 1 Fetoprotein antibody [EPR19240-133]
製品の詳細	Rabbit monoclonal [EPR19240-133] to alpha 1 Fetoprotein
由来種	Rabbit
アプリケーション	適用あり: WB, ICC/IF, IP
種交差性	交差種: Mouse
免疫原	Recombinant fragment. This information is proprietary to Abcam and/or its suppliers.
ポジティブ・コントロール	WB: Mouse placenta and fetal liver lysates; Hepa1-6 whole cell lysate. ICC/IF: Hepa1-6 cells. IP: Mouse placenta lysate.
特記事項	<p>This product is a recombinant monoclonal antibody, which offers several advantages including:</p> <ul style="list-style-type: none">- High batch-to-batch consistency and reproducibility- Improved sensitivity and specificity- Long-term security of supply- Animal-free production <p>For more information see here.</p> <p>Our RabMAb[®] technology is a patented hybridoma-based technology for making rabbit monoclonal antibodies. For details on our patents, please refer to RabMAb[®] patents.</p>

製品の特性

製品の状態	Liquid
保存方法	Shipped at 4°C. Store at +4°C short term (1-2 weeks). Upon delivery aliquot. Store at -20°C long term. Avoid freeze / thaw cycle.
バッファー	pH: 7.2 Preservative: 0.01% Sodium azide Constituents: 0.05% BSA, 40% Glycerol (glycerin, glycerine), PBS
精製度	Protein A purified
ポリ/モノ	モノクローナル
クローン名	EPR19240-133
アイソタイプ	IgG

アプリケーション

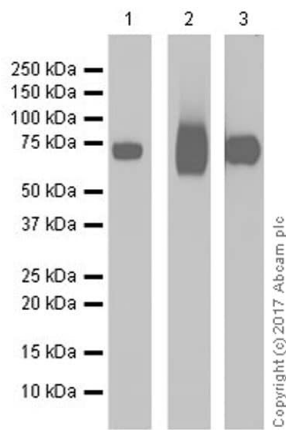
The Abpromise guarantee **Abpromise保証は、次のテスト済みアプリケーションにおけるab199054の使用に適用されます**
アプリケーションノートには、推奨の開始希釈率がありますが、適切な希釈率につきましてはご検討ください。

アプリケーション	Abreviews	特記事項
WB		1/1000. Detects a band of approximately 70 kDa (predicted molecular weight: 67 kDa).
ICC/IF		1/100.
IP		1/30.

ターゲット情報

機能	Binds copper, nickel, and fatty acids as well as, and bilirubin less well than, serum albumin. Only a small percentage (less than 2%) of the human AFP shows estrogen-binding properties.
組織特異性	Plasma. Synthesized by the fetal liver and yolk sac.
配列類似性	Belongs to the ALB/AFP/VDB family. Contains 3 albumin domains.
発生段階	Occurs in the plasma of fetuses more than 4 weeks old, reaches the highest levels during the 12th-16th week of gestation, and drops to trace amounts after birth. The serum level in adults is usually less than 40 ng/ml. AFP occurs also at high levels in the plasma and ascitic fluid of adults with hepatoma.
翻訳後修飾	Independent studies suggest heterogeneity of the N-terminal sequence of the mature protein and of the cleavage site of the signal sequence. Sulfated.
細胞内局在	Secreted.

画像



Western blot - Anti-alpha 1 Fetoprotein antibody [EPR19240-133] (ab199054)

All lanes : Anti-alpha 1 Fetoprotein antibody [EPR19240-133] (ab199054) at 1/1000 dilution

Lane 1 : Mouse placenta lysate

Lane 2 : Mouse fetal liver lysate

Lane 3 : Hepa1-6 (mouse hepatoma epithelial cell line) whole cell lysate

Lysates/proteins at 20 µg per lane.

Secondary

All lanes : Goat Anti-Rabbit IgG H&L (HRP) (**ab97051**) at 1/100000 dilution

Developed using the ECL technique.

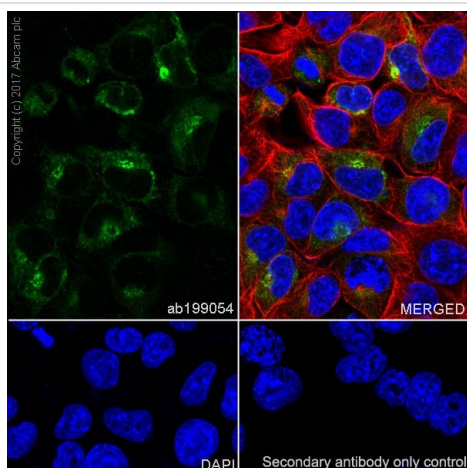
Predicted band size: 67 kDa

Observed band size: 70 kDa

Exposure time : Lanes 1 and 2: 3 seconds; Lane 3: 3 minutes.

Blocking/Dilution buffer: 5% NFDm/TBST.

The observed molecular weight is consistent with the literature (PMID: 18525461).



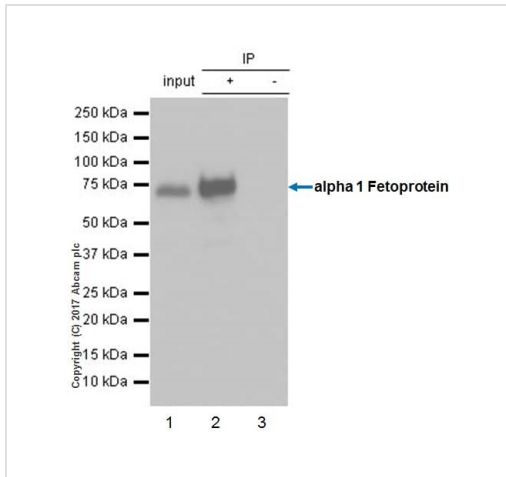
Immunocytochemistry/ Immunofluorescence - Anti-alpha 1 Fetoprotein antibody [EPR19240-133] (ab199054)

Immunofluorescent analysis of 4% paraformaldehyde-fixed, 0.1% Triton X-100 permeabilized Hepa1-6 (mouse hepatoma epithelial cell line) cells labeling alpha 1 Fetoprotein with ab199054 at 1/1000 dilution followed by Goat Anti-Rabbit IgG H&L (Alexa Fluor[®] 488) (**ab150077**) secondary antibody at 1/1000 dilution (green).

Confocal image showing cytoplasmic staining on Hepa1-6 cells.

The nuclear counter stain is DAPI (blue). Tubulin is detected with Anti-alpha Tubulin antibody [DM1A] - Microtubule Marker (Alexa Fluor[®] 594) (**ab195889**) (red) at 1/200 dilution.

Secondary antibody only control: Used PBS instead of primary antibody, secondary antibody is Goat Anti-Rabbit IgG H&L (Alexa Fluor[®] 488) (**ab150077**) secondary antibody at 1/1000 dilution.



Immunoprecipitation - Anti-alpha 1 Fetoprotein antibody [EPR19240-133] (ab199054)

alpha 1 Fetoprotein was immunoprecipitated from 0.35 mg of mouse placenta lysate with ab199054 at 1/30 dilution. Western blot was performed from the immunoprecipitate using ab199054 at 1/500 dilution. VeriBlot for IP Detection Reagent (HRP) (**ab131366**), was used for detection at 1/1000 dilution.

Lane 1: Mouse placenta lysate 10 µg (Input).

Lane 2: ab199054 IP in mouse placenta lysate.

Lane 3: Rabbit monoclonal IgG (**ab172730**) instead of ab199054 in mouse placenta lysate.

Blocking and dilution buffer and concentration: 5% NFDm/TBST.

Exposure time: 1 second.

Why choose a recombinant antibody?

- Research with confidence**
Consistent and reproducible results
- Long-term and scalable supply**
Recombinant technology
- Success from the first experiment**
Confirmed specificity
- Ethical standards compliant**
Animal-free production

Anti-alpha 1 Fetoprotein antibody [EPR19240-133] (ab199054)

Please note: All products are "FOR RESEARCH USE ONLY. NOT FOR USE IN DIAGNOSTIC PROCEDURES"

Our Abpromise to you: Quality guaranteed and expert technical support

- Replacement or refund for products not performing as stated on the datasheet
- Valid for 12 months from date of delivery
- Response to your inquiry within 24 hours
- We provide support in Chinese, English, French, German, Japanese and Spanish
- Extensive multi-media technical resources to help you
- We investigate all quality concerns to ensure our products perform to the highest standards

If the product does not perform as described on this datasheet, we will offer a refund or replacement. For full details of the Abpromise, please visit <https://www.abcam.co.jp/abpromise> or contact our technical team.

Terms and conditions

- Guarantee only valid for products bought direct from Abcam or one of our authorized distributors