

Anti-alpha 1 Fetoprotein antibody [EPAFP61] - BSA and Azide free ab271896

リコンビナント **RabMAb**

画像数 6

製品の概要

製品名	Anti-alpha 1 Fetoprotein antibody [EPAFP61] - BSA and Azide free
製品の詳細	Rabbit monoclonal [EPAFP61] to alpha 1 Fetoprotein - BSA and Azide free
由来種	Rabbit
アプリケーション	適用あり: Flow Cyt (Intra), WB, IHC-P, IP, ICC/IF
種交差性	交差種: Human
免疫原	Recombinant full length protein corresponding to Human alpha 1 Fetoprotein. Database link: P02771
ポジティブ・コントロール	Flow Cyt (intra): HepG2 cells; IP: HepG2 whole cell lysate; ICC/IF: HepG2 cells; IHC-P: Human liver cancer tissue; WB: HepG2 whole cell lysate.
特記事項	<p>ab271896 is the carrier-free version of ab133617.</p> <p>Our carrier-free antibodies are typically supplied in a PBS-only formulation, purified and free of BSA, sodium azide and glycerol. The carrier-free buffer and high concentration allow for increased conjugation efficiency.</p> <p>This conjugation-ready format is designed for use with fluorochromes, metal isotopes, oligonucleotides, and enzymes, which makes them ideal for antibody labelling, functional and cell-based assays, flow-based assays (e.g. mass cytometry) and Multiplex Imaging applications.</p> <p>Use our conjugation kits for antibody conjugates that are ready-to-use in as little as 20 minutes with <1 minute hands-on-time and 100% antibody recovery: available for fluorescent dyes, HRP, biotin and gold.</p> <p>This product is compatible with the Maxpar[®] Antibody Labeling Kit from Fluidigm, without the need for antibody preparation. Maxpar[®] is a trademark of Fluidigm Canada Inc.</p> <p>This product is a recombinant monoclonal antibody, which offers several advantages including:</p> <ul style="list-style-type: none"> - High batch-to-batch consistency and reproducibility - Improved sensitivity and specificity - Long-term security of supply - Animal-free production <p>For more information see here.</p> <p>Our RabMAb[®] technology is a patented hybridoma-based technology for making rabbit monoclonal antibodies. For details on our patents, please refer to RabMAb[®] patents.</p>

Mouse, Rat: We have preliminary internal testing data to indicate this antibody may not react with these species. Please contact us for more information.

製品の特性

製品の状態	Liquid
保存方法	Shipped at 4°C. Store at +4°C. Do Not Freeze.
バッファー	pH: 7.20 Constituent: PBS
キャリア・フリー	はい
精製度	Protein A purified
ポリ/モノ	モノクローナル
クローン名	EPAFP61
アイソタイプ	IgG

アプリケーション

The Abpromise guarantee **Abpromise保証は、**次のテスト済みアプリケーションにおけるab271896の使用に適用されます
アプリケーションノートには、推奨の開始希釈率がありますが、適切な希釈率につきましてはご検討ください。

アプリケーション	Abreviews	特記事項
Flow Cyt (Intra)		Use at an assay dependent concentration. ab172730 - Rabbit monoclonal IgG, is suitable for use as an isotype control with this antibody.
WB		Use at an assay dependent concentration. Detects a band of approximately 70 kDa (predicted molecular weight: 68 kDa).
IHC-P		Use at an assay dependent concentration. Perform heat mediated antigen retrieval before commencing with IHC staining protocol. See IHC antigen retrieval protocols. Heat up to 98°C, below boiling, and then let cool for 10-20 min.
IP		Use at an assay dependent concentration.
ICC/IF		Use at an assay dependent concentration.

ターゲット情報

機能	Binds copper, nickel, and fatty acids as well as, and bilirubin less well than, serum albumin. Only a small percentage (less than 2%) of the human AFP shows estrogen-binding properties.
組織特異性	Plasma. Synthesized by the fetal liver and yolk sac.
配列類似性	Belongs to the ALB/AFP/VDB family.

発生段階

Contains 3 albumin domains.

翻訳後修飾

Occurs in the plasma of fetuses more than 4 weeks old, reaches the highest levels during the 12th-16th week of gestation, and drops to trace amounts after birth. The serum level in adults is usually less than 40 ng/ml. AFP occurs also at high levels in the plasma and ascitic fluid of adults with hepatoma.

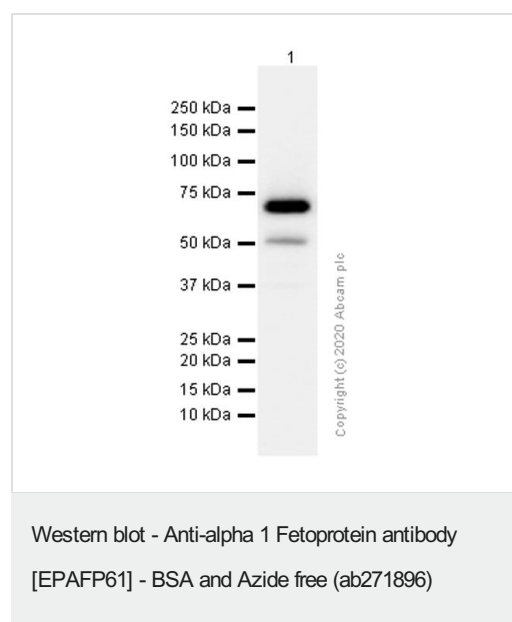
Independent studies suggest heterogeneity of the N-terminal sequence of the mature protein and of the cleavage site of the signal sequence.

Sulfated.

細胞内局在

Secreted.

画像



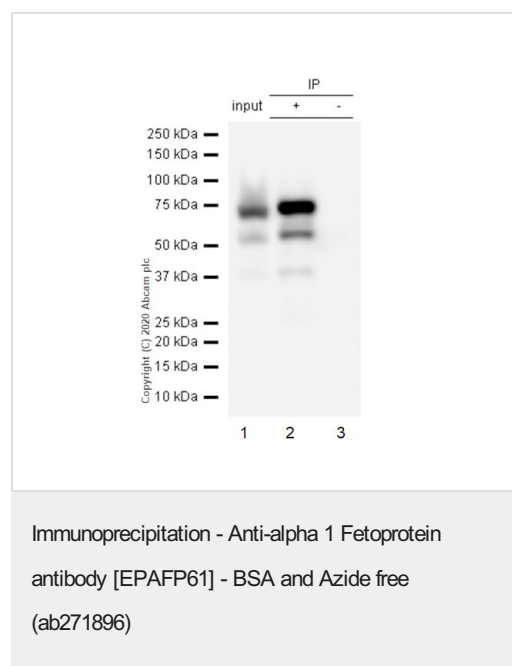
Anti-alpha 1 Fetoprotein antibody [EPAFP61] ([ab133617](#)) at 1/10000 dilution (Purified) + HepG2 (Human hepatocellular carcinoma epithelial cell) whole cell lysate at 15 µg

Secondary

Goat Anti-Rabbit IgG (HRP) with minimal cross-reactivity with human IgG at 1/2000 dilution

Predicted band size: 68 kDa

This data was developed using [ab133617](#), the same antibody clone in a different buffer formulation.



This data was developed using [ab133617](#), the same antibody clone in a different buffer formulation.

Purified [ab133617](#) at 1/20 dilution (0.5µg) immunoprecipitating alpha 1 Fetoprotein in HepG2 whole cell lysate.

Lane 1 (input): HepG2 (Human hepatocellular carcinoma epithelial cell) whole cell lysate 10µg

Lane 2 (+): [ab133617](#) + HepG2 whole cell lysate.

Lane 3 (-): Rabbit monoclonal IgG ([ab172730](#)) instead of [ab133617](#) in HepG2 whole cell lysate.

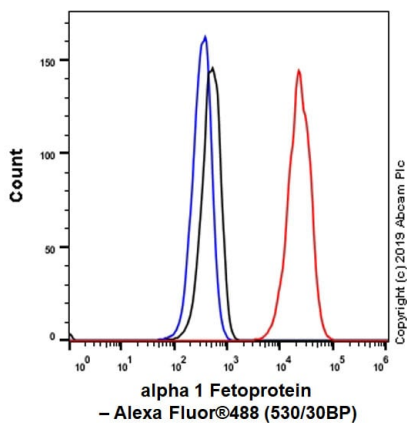
VeriBlot for IP Detection Reagent (HRP) ([ab131366](#)) (1/1000 dilution) was used for Western blotting.

Blocking Buffer and concentration: 5% NFDm/TBST.

Diluting buffer and concentration: 5% NFDm/TBST.

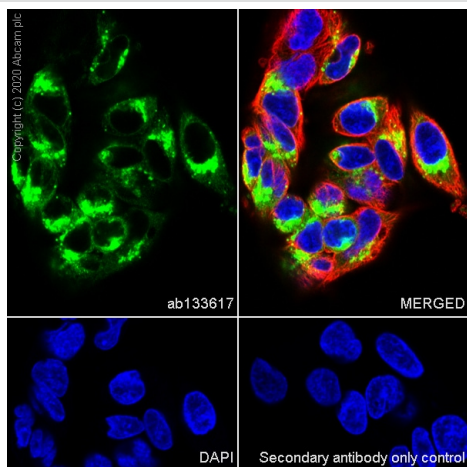
Observed band size: 68 kDa

Lower bands could be caspase-dependent cleavage fragments. (PMID: 31811908)



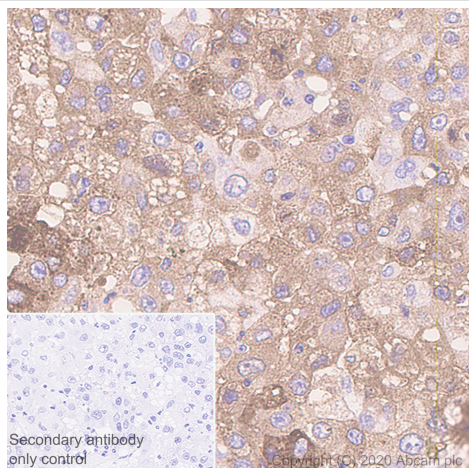
Flow Cytometry (Intracellular) - Anti-alpha 1 Fetoprotein antibody [EPAFP61] - BSA and Azide free (ab271896)

This data was developed using [ab133617](#), the same antibody clone in a different buffer formulation. Intracellular Flow Cytometry analysis of HepG2 (Human hepatocellular carcinoma epithelial cell) cells labeling alpha 1 Fetoprotein with Purified [ab133617](#) at 1/20 dilution (10 µg/mL) (Red). Cells were fixed with 4% Paraformaldehyde and permeabilised with 90% Methanol. A Goat anti rabbit IgG (Alexa Fluor® 488, [ab150077](#)) secondary antibody was used at 1/2000. Isotype control - Rabbit monoclonal IgG (Black). Unlabeled control - Cell without incubation with primary antibody and secondary antibody (Blue).



Immunocytochemistry/ Immunofluorescence - Anti-alpha 1 Fetoprotein antibody [EPAFP61] - BSA and Azide free (ab271896)

This data was developed using [ab133617](#), the same antibody clone in a different buffer formulation. Immunocytochemistry analysis of HepG2 (Human hepatocellular carcinoma epithelial cell) cells labeling alpha 1 Fetoprotein with Purified [ab133617](#) at 1/250 dilution (0.52 µg/mL). Cells were fixed in 4% Paraformaldehyde and permeabilized with 0.1% tritonX-100. Cells were counterstained with Ab195889 Anti-alpha Tubulin antibody [DM1A] - Microtubule Marker (Alexa Fluor® 594) 1/200 dilution (2.5 µg/mL). Goat anti rabbit IgG (Alexa Fluor® 488, [ab150077](#)) was used as the secondary antibody at 1/1000 dilution (2 µg/mL). DAPI (blue) was used as nuclear counterstain. PBS instead of the primary antibody was used as the secondary antibody only control.

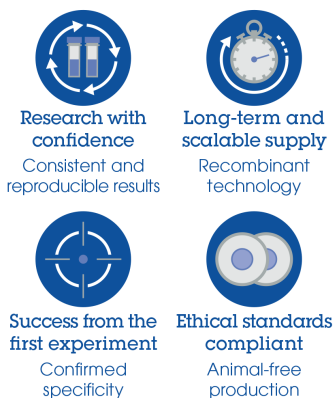


Immunohistochemistry (Formalin/PFA-fixed paraffin-embedded sections) - Anti-alpha 1 Fetoprotein antibody [EPAFP61] - BSA and Azide free (ab271896)

This data was developed using [ab133617](#), the same antibody clone in a different buffer formulation.

Immunohistochemistry (Formalin/PFA-fixed paraffin-embedded sections) analysis of human liver cancer tissue sections labeling alpha 1 Fetoprotein with Purified [ab133617](#) at 1/100 dilution (1.3 µg/mL). Heat mediated antigen retrieval using Bond™ Epitope Retrieval Solution 1 (pH 6.0). Rabbit specific IHC polymer detection kit HRP/DAB ([ab209101](#)) was used as the secondary antibody. Negative control: PBS instead of the primary antibody. Hematoxylin was used as a counterstain.

Why choose a recombinant antibody?



Anti-alpha 1 Fetoprotein antibody [EPAFP61] - BSA and Azide free (ab271896)

Please note: All products are "FOR RESEARCH USE ONLY. NOT FOR USE IN DIAGNOSTIC PROCEDURES"

Our Abpromise to you: Quality guaranteed and expert technical support

- Replacement or refund for products not performing as stated on the datasheet
- Valid for 12 months from date of delivery
- Response to your inquiry within 24 hours
- We provide support in Chinese, English, French, German, Japanese and Spanish
- Extensive multi-media technical resources to help you
- We investigate all quality concerns to ensure our products perform to the highest standards

If the product does not perform as described on this datasheet, we will offer a refund or replacement. For full details of the Abpromise,

please visit <https://www.abcam.co.jp/abpromise> or contact our technical team.

Terms and conditions

- Guarantee only valid for products bought direct from Abcam or one of our authorized distributors