

Anti-alpha 1 Fetoprotein antibody ab87635

1 References [画像数 1](#)

製品の概要

製品名	Anti-alpha 1 Fetoprotein antibody
製品の詳細	Rabbit polyclonal to alpha 1 Fetoprotein
由来種	Rabbit
特異性	ab87635 does not cross react to human lactoferrin, bovine lactoferrin or bovine serum albumin.
アプリケーション	適用あり: WB
種交差性	交差種: Human
免疫原	Full length native protein (purified) corresponding to Human alpha 1 Fetoprotein. Purified human alpha 1 Fetoprotein.
ポジティブ・コントロール	alpha 1 fetoprotein
特記事項	<p>The Life Science industry has been in the grips of a reproducibility crisis for a number of years. Abcam is leading the way in addressing this with our range of recombinant monoclonal antibodies and knockout edited cell lines for gold-standard validation. Please check that this product meets your needs before purchasing.</p> <p>If you have any questions, special requirements or concerns, please send us an inquiry and/or contact our Support team ahead of purchase. Recommended alternatives for this product can be found below, along with publications, customer reviews and Q&As</p>

製品の特性

製品の状態	Liquid
保存方法	Shipped at 4°C. Upon delivery aliquot and store at -20°C. Avoid repeated freeze / thaw cycles.
精製度	Immunogen affinity purified
特記事項(精製)	ab87635 was affinity-purified and isolated on immobilized antigen-affinity column and supplied as stabilized product.
ポリ/モノ	ポリクローナル
アイソタイプ	IgG

アプリケーション

The Abpromise guarantee

Abpromise保証は、次のテスト済みアプリケーションにおけるab87635の使用に適用されます

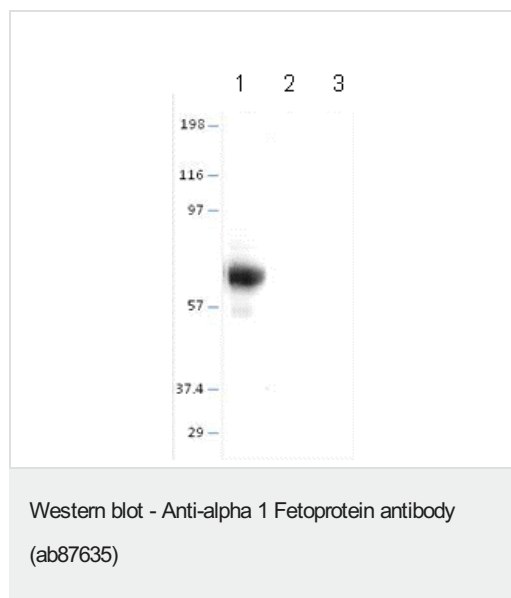
アプリケーションノートには、推奨の開始希釈率がありますが、適切な希釈率につきましてはご確認ください。

アプリケーション	Abreviews	特記事項
WB		1/500. Predicted molecular weight: 69 kDa.

ターゲット情報

機能	Binds copper, nickel, and fatty acids as well as, and bilirubin less well than, serum albumin. Only a small percentage (less than 2%) of the human AFP shows estrogen-binding properties.
組織特異性	Plasma. Synthesized by the fetal liver and yolk sac.
配列類似性	Belongs to the ALB/AFP/VDB family. Contains 3 albumin domains.
発生段階	Occurs in the plasma of fetuses more than 4 weeks old, reaches the highest levels during the 12th-16th week of gestation, and drops to trace amounts after birth. The serum level in adults is usually less than 40 ng/ml. AFP occurs also at high levels in the plasma and ascitic fluid of adults with hepatoma.
翻訳後修飾	Independent studies suggest heterogeneity of the N-terminal sequence of the mature protein and of the cleavage site of the signal sequence. Sulfated.
細胞内局在	Secreted.

画像



All lanes : Anti-alpha 1 Fetoprotein antibody (ab87635) at 1/500 dilution

Lane 1 : Human alpha Fetoprotein

Lane 2 : Human Lactoferrin

Lane 3 : Human serum albumin

Predicted band size: 69 kDa

Observed band size: 69 kDa

Additional bands at: 57 kDa (possible degradation product)

Please note: All products are "FOR RESEARCH USE ONLY. NOT FOR USE IN DIAGNOSTIC PROCEDURES"

Our Abpromise to you: Quality guaranteed and expert technical support

- Replacement or refund for products not performing as stated on the datasheet

- Valid for 12 months from date of delivery
- Response to your inquiry within 24 hours
- We provide support in Chinese, English, French, German, Japanese and Spanish
- Extensive multi-media technical resources to help you
- We investigate all quality concerns to ensure our products perform to the highest standards

If the product does not perform as described on this datasheet, we will offer a refund or replacement. For full details of the Abpromise, please visit <https://www.abcam.co.jp/abpromise> or contact our technical team.

Terms and conditions

- Guarantee only valid for products bought direct from Abcam or one of our authorized distributors