

Anti-alpha 1 Antitrypsin antibody [EPSISR16] ab133642

リコンビナント RabMAb

3 References [画像数 3](#)

製品の概要

製品名	Anti-alpha 1 Antitrypsin antibody [EPSISR16]
製品の詳細	Rabbit monoclonal [EPSISR16] to alpha 1 Antitrypsin
由来種	Rabbit
アプリケーション	適用あり: WB, IP 適用なし: IHC-P
種交差性	交差種: Human
免疫原	Synthetic peptide. This information is proprietary to Abcam and/or its suppliers.
ポジティブ・コントロール	WB: Human platelet, fetal kidney and plasma lysates. IP: Human plasma lysate.
特記事項	This product is a recombinant monoclonal antibody, which offers several advantages including: <ul style="list-style-type: none">- High batch-to-batch consistency and reproducibility- Improved sensitivity and specificity- Long-term security of supply- Animal-free production For more information see here . Our RabMAb [®] technology is a patented hybridoma-based technology for making rabbit monoclonal antibodies. For details on our patents, please refer to RabMAb[®] patents .

製品の特性

製品の状態	Liquid
保存方法	Shipped at 4°C. Store at -20°C. Stable for 12 months at -20°C.
バッファー	pH: 7.20 Preservative: 0.01% Sodium azide Constituents: 9% PBS, 40% Glycerol (glycerin, glycerine), 0.05% BSA, 50% Tissue culture supernatant
精製度	Protein A purified
ポリ/モノ	モノクローナル
クローン名	EPSISR16
アイソタイプ	IgG

アプリケーション

The Abpromise guarantee **Abpromise保証は、次のテスト済みアプリケーションにおけるab133642の使用に適用されます**
アプリケーションノートには、推奨の開始希釈率がありますが、適切な希釈率につきましてはご検討ください。

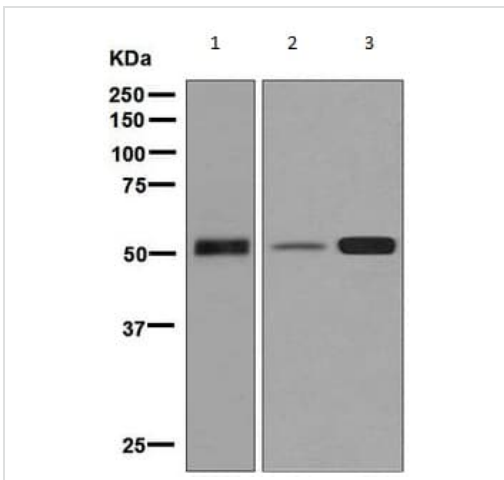
アプリケーション	Abreviews	特記事項
WB		1/1000 - 1/10000. Predicted molecular weight: 46 kDa.
IP		1/10 - 1/100.

追加情報 Is unsuitable for IHC-P.

ターゲット情報

機能	<p>Inhibitor of serine proteases. Its primary target is elastase, but it also has a moderate affinity for plasmin and thrombin. Irreversibly inhibits trypsin, chymotrypsin and plasminogen activator. The aberrant form inhibits insulin-induced NO synthesis in platelets, decreases coagulation time and has proteolytic activity against insulin and plasmin.</p> <p>Short peptide from AAT: reversible chymotrypsin inhibitor. It also inhibits elastase, but not trypsin. Its major physiological function is the protection of the lower respiratory tract against proteolytic destruction by human leukocyte elastase (HLE).</p>
組織特異性	Ubiquitous. Expressed in leukocytes and plasma.
関連疾患	Alpha-1-antitrypsin deficiency
配列類似性	Belongs to the serpin family.
ドメイン	<p>The reactive center loop (RCL) extends out from the body of the protein and directs binding to the target protease. The protease cleaves the serpin at the reactive site within the RCL, establishing a covalent linkage between the carboxyl group of the serpin reactive site and the serine hydroxyl of the protease. The resulting inactive serpin-protease complex is highly stable.</p>
翻訳後修飾	<p>N-glycosylated. Differential glycosylation produces a number of isoforms. N-linked glycan at Asn-107 is alternatively di-antennary, tri-antennary or tetra-antennary. The glycan at Asn-70 is di-antennary with trace amounts of tri-antennary. Glycan at Asn-271 is exclusively di-antennary. Structure of glycans at Asn-70 and Asn-271 is Hex5HexNAc4. The structure of the antennae is Neu5Ac(alpha1-6)Gal(beta1-4)GlcNAc attached to the core structure Man(alpha1-6)[Man(alpha1-3)]Man(beta1-4)GlcNAc(beta1-4)GlcNAc. Some antennae are fucosylated, which forms a Lewis-X determinant.</p> <p>Proteolytic processing may yield the truncated form that ranges from Asp-30 to Lys-418.</p>
細胞内局在	Secreted. Endoplasmic reticulum. The S and Z allele are not secreted effectively and accumulate intracellularly in the endoplasmic reticulum and Secreted, extracellular space, extracellular matrix.

画像



Western blot - Anti-alpha 1 Antitrypsin antibody [EPSISR16] (ab133642)

All lanes : Anti-alpha 1 Antitrypsin antibody [EPSISR16] (ab133642) at 1/1000 dilution

Lane 1 : Human platelet lysate

Lane 2 : Fetal kidney lysate

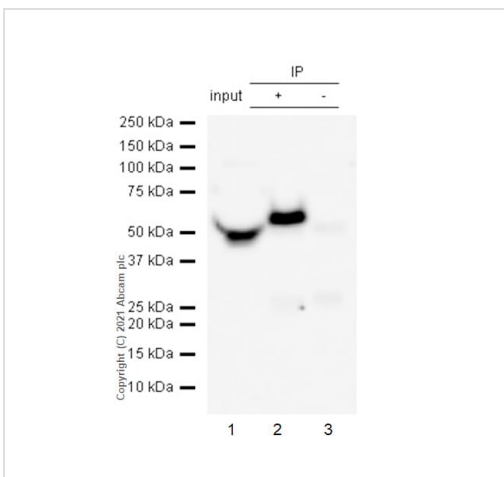
Lane 3 : Human plasma lysate

Lysates/proteins at 10 µg per lane.

Secondary

All lanes : HRP labelled goat anti-rabbit at 1/2000 dilution

Predicted band size: 46 kDa



Immunoprecipitation - Anti-alpha 1 Antitrypsin antibody [EPSISR16] (ab133642)

alpha 1 Antitrypsin was immunoprecipitated from 0.35 mg Human plasma 10 µg with 133642 at 1/50 dilution (2µg). VeriBlot for IP Detection Reagent (HRP)(**ab131366**) was used at 1/5000 dilution.

Lane 1: Human plasma 10 µg

Lane 2: ab133642 IP in Human plasma

Lane 3: Rabbit monoclonal IgG (**ab172730**) instead of ab133642 in Human plasma

Blocking and dilution buffer and concentration: 5% NFDm/TBST.

Why choose a recombinant antibody?



Research with confidence
Consistent and reproducible results



Long-term and scalable supply
Recombinant technology



Success from the first experiment
Confirmed specificity



Ethical standards compliant
Animal-free production

Anti-alpha 1 Antitrypsin antibody [EPSISR16]
(ab133642)

Please note: All products are "FOR RESEARCH USE ONLY. NOT FOR USE IN DIAGNOSTIC PROCEDURES"

Our Abpromise to you: Quality guaranteed and expert technical support

- Replacement or refund for products not performing as stated on the datasheet
- Valid for 12 months from date of delivery
- Response to your inquiry within 24 hours
- We provide support in Chinese, English, French, German, Japanese and Spanish
- Extensive multi-media technical resources to help you
- We investigate all quality concerns to ensure our products perform to the highest standards

If the product does not perform as described on this datasheet, we will offer a refund or replacement. For full details of the Abpromise, please visit <https://www.abcam.co.jp/abpromise> or contact our technical team.

Terms and conditions

- Guarantee only valid for products bought direct from Abcam or one of our authorized distributors