

Alkaline Phosphatase Anti-S tag antibody ab133157

面格粉 1

医薬用外毒物

製品の概要

製品名	Alkaline Phosphatase Anti-S tag antibody
製品の詳細	Alkaline Phosphatase Rabbit polyclonal to S tag
由来種	Rabbit
標識	Alkaline Phosphatase
アプリケーション	適用あり: WB, ELISA
種交差性	交差種: Species independent
免疫原	S tag sequence KETAAAKFERQHMDS

 [Run BLAST with](#)

 [Run BLAST with](#)

特記事項

The Life Science industry has been in the grips of a reproducibility crisis for a number of years. Abcam is leading the way in addressing this with our range of recombinant monoclonal antibodies and knockout edited cell lines for gold-standard validation. Please check that this product meets your needs before purchasing.

If you have any questions, special requirements or concerns, please send us an inquiry and/or contact our Support team ahead of purchase. Recommended alternatives for this product can be found below, along with publications, customer reviews and Q&As

製品の特性

製品の状態	Lyophilized: Prior to use, reconstitute to 1 mL with ddH ₂ O, vortex gently and allow material to reconstitute for 20 minutes. Avoid exposure to heat. After product has been reconstituted, store at 2-8°C in the dark and use within 6 months. For extended storage, add an equal volume of glycerol (ACS grade) for a final concentration of 50%, and store at -20 degrees Celsius. Prepare a working dilution daily.
保存方法	Shipped at 4°C. Store at +4°C short term (1-2 weeks). Store at -20°C or -80°C. Avoid freeze / thaw cycle.
バッファー	pH: 7.40 Preservative: 0.013% Sodium azide Constituents: 0.3% Tris, 0.88% Sodium chloride, 0.047% Magnesium chloride, 0.0016% Zinc chloride

ポリ/モノ	ポリクローナル
アイソタイプ	IgG

アプリケーション

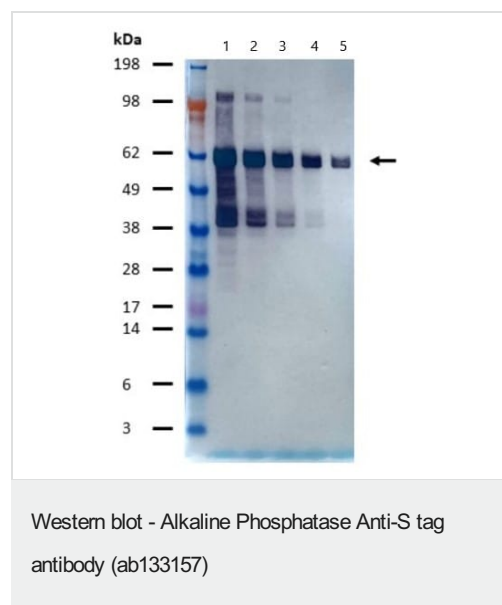
The Abpromise guarantee **Abpromise保証は、** 次のテスト済みアプリケーションにおけるab133157の使用に適用されます
アプリケーションノートには、推奨の開始希釈率がありますが、適切な希釈率につきましてはご検討ください。

アプリケーション	Abreviews	特記事項
WB		1/5000 - 1/50000. Starting dilution: 1/2000
ELISA		1/5000 - 1/50000.

ターゲット情報

関連性 S tag is an epitope tag composed of a 15 residue peptide, KETAAKFERQHMDs, derived from the pancreatic ribonuclease A.

画像



All lanes : Alkaline Phosphatase Anti-S tag antibody (ab133157) at 1/10000 dilution

Lane 1 : 60 kDa S-tagged protein at 0.3 µg
Lane 2 : 60 kDa S-tagged protein at 0.01 µg
Lane 3 : 60 kDa S-tagged protein at 0.03 µg
Lane 4 : 60 kDa S-tagged protein at 0.001 µg
Lane 5 : 60 kDa S-tagged protein at 0.003 µg

Imaged using stabilized Alkaline Phosphatase substrate.

Please note: All products are "FOR RESEARCH USE ONLY. NOT FOR USE IN DIAGNOSTIC PROCEDURES"

Our Abpromise to you: Quality guaranteed and expert technical support

- Replacement or refund for products not performing as stated on the datasheet
- Valid for 12 months from date of delivery
- Response to your inquiry within 24 hours

- We provide support in Chinese, English, French, German, Japanese and Spanish
- Extensive multi-media technical resources to help you
- We investigate all quality concerns to ensure our products perform to the highest standards

If the product does not perform as described on this datasheet, we will offer a refund or replacement. For full details of the Abpromise, please visit <https://www.abcam.co.jp/abpromise> or contact our technical team.

Terms and conditions

- Guarantee only valid for products bought direct from Abcam or one of our authorized distributors