

# Alexa Fluor® 700 Anti-IL-2 Receptor alpha antibody [MEM-181] ab270665

画像数 1

### 製品の概要

---

製品名	Alexa Fluor® 700 Anti-IL-2 Receptor alpha antibody [MEM-181]
製品の詳細	Alexa Fluor® 700 Mouse monoclonal [MEM-181] to IL-2 Receptor alpha
由来種	Mouse
標識	Alexa Fluor® 700
アプリケーション	<b>適用あり:</b> Flow Cyt
種交差性	<b>交差種:</b> Human
免疫原	Tissue, cells or virus. PHA-activated peripheral blood leucocytes
ポジティブ・コントロール	Flow: PHA-stimulated human peripheral blood mononuclear cells.
特記事項	<p>The Life Science industry has been in the grips of a reproducibility crisis for a number of years. Abcam is leading the way in addressing this with our range of recombinant monoclonal antibodies and knockout edited cell lines for gold-standard validation. Please check that this product meets your needs before purchasing.</p> <p>If you have any questions, special requirements or concerns, please send us an inquiry and/or contact our Support team ahead of purchase. Recommended alternatives for this product can be found below, along with publications, customer reviews and Q&amp;As</p>

### 製品の特性

---

製品の状態	Liquid
保存方法	Shipped at 4°C. Store at +4°C short term (1-2 weeks). Store at +4°C. Store In the Dark.
バッファー	pH: 7.4 Preservative: 0.1% Sodium azide Constituent: PBS
精製度	Size exclusion
ポリ/モノ	モノクローナル
クローン名	MEM-181
アイソタイプ	IgG1

## アプリケーション

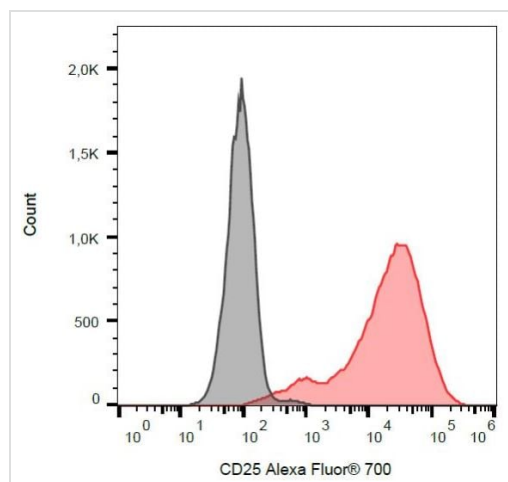
**The Abpromise guarantee** Abpromise保証は、次のテスト済みアプリケーションにおけるab270665の使用に適用されます  
アプリケーションノートには、推奨の開始希釈率がありますが、適切な希釈率につきましてはご検討ください。

アプリケーション	Abreviews	特記事項
Flow Cyt		Use 4µl for 10 <sup>6</sup> cells.

## ターゲット情報

<b>機能</b>	Receptor for interleukin-2.
<b>関連疾患</b>	Genetic variations in IL2RA are associated with susceptibility to diabetes mellitus insulin-dependent type 10 (IDDM10) [MIM:601942]. A multifactorial disorder of glucose homeostasis that is characterized by susceptibility to ketoacidosis in the absence of insulin therapy. Clinical features are polydipsia, polyphagia and polyuria which result from hyperglycemia-induced osmotic diuresis and secondary thirst. These derangements result in long-term complications that affect the eyes, kidneys, nerves, and blood vessels.
<b>配列類似性</b>	Contains 2 Sushi (CCP/SCR) domains.
<b>細胞内局在</b>	Membrane.

## 画像



Flow cytometry analysis of human PHA-stimulated peripheral blood mononuclear cell labeling IL-2 alpha using ab270665.

Flow Cytometry - Alexa Fluor® 700 Anti-IL-2  
Receptor alpha antibody [MEM-181] (ab270665)

**Please note:** All products are "FOR RESEARCH USE ONLY. NOT FOR USE IN DIAGNOSTIC PROCEDURES"

## Our Abpromise to you: Quality guaranteed and expert technical support

- Replacement or refund for products not performing as stated on the datasheet
- Valid for 12 months from date of delivery

- Response to your inquiry within 24 hours
- We provide support in Chinese, English, French, German, Japanese and Spanish
- Extensive multi-media technical resources to help you
- We investigate all quality concerns to ensure our products perform to the highest standards

If the product does not perform as described on this datasheet, we will offer a refund or replacement. For full details of the Abpromise, please visit <https://www.abcam.co.jp/abpromise> or contact our technical team.

### **Terms and conditions**

---

- Guarantee only valid for products bought direct from Abcam or one of our authorized distributors