


Alexa Fluor® 647 Anti-MEK1 antibody [E342] ab193986

リコンビナント RabMAb

画像数 3

製品の概要

製品名	Alexa Fluor® 647 Anti-MEK1 antibody [E342]
製品の詳細	Alexa Fluor® 647 Rabbit monoclonal [E342] to MEK1
由来種	Rabbit
標識	Alexa Fluor® 647. Ex: 652nm, Em: 668nm
アプリケーション	適用あり: ICC/IF, Flow Cyt (Intra)
種交差性	<p>交差種: Human</p> <p>交差が予測される動物種: Mouse, Rat, Cow </p>
免疫原	Synthetic peptide. This information is proprietary to Abcam and/or its suppliers.
ポジティブ・コントロール	ICC/IF - HeLa, Flow Cyt (intra) - HeLa
特記事項	<p>Our RabMAb® technology is a patented hybridoma-based technology for making rabbit monoclonal antibodies. For details on our patents, please refer to RabMAb® patents.</p> <p>Alexa Fluor® is a registered trademark of Molecular Probes, Inc, a Thermo Fisher Scientific Company. The Alexa Fluor® dye included in this product is provided under an intellectual property license from Life Technologies Corporation. As this product contains the Alexa Fluor® dye, the purchase of this product conveys to the buyer the non-transferable right to use the purchased product and components of the product only in research conducted by the buyer (whether the buyer is an academic or for-profit entity). As this product contains the Alexa Fluor® dye the sale of this product is expressly conditioned on the buyer not using the product or its components, or any materials made using the product or its components, in any activity to generate revenue, which may include, but is not limited to use of the product or its components: (i) in manufacturing; (ii) to provide a service, information, or data in return for payment (iii) for therapeutic, diagnostic or prophylactic purposes; or (iv) for resale, regardless of whether they are sold for use in research. For information on purchasing a license to this product for purposes other than research, contact Life Technologies Corporation, 5781 Van Allen Way, Carlsbad, CA 92008 USA or outlicensing@thermofisher.com.</p>

製品の特性

製品の状態	Liquid
保存方法	Shipped at 4°C. Store at +4°C short term (1-2 weeks). Upon delivery aliquot. Store at -20°C.

	Avoid freeze / thaw cycle. Stable for 12 months at -20°C. Store In the Dark.
バッファー	pH: 7.40 Preservative: 0.02% Sodium azide Constituents: PBS, 30% Glycerol (glycerin, glycerine), 1% BSA
精製度	Protein A purified
ポリ/モノ	モノクローナル
クローン名	E342
アイソタイプ	IgG

アプリケーション

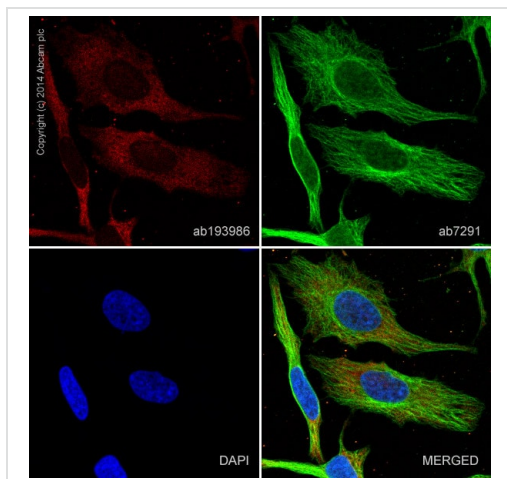
The Abpromise guarantee **Abpromise保証は、**次のテスト済みアプリケーションにおけるab193986の使用に適用されます
 アプリケーションノートには、推奨の開始希釈率がありますが、適切な希釈率につきましてはご検討ください。

アプリケーション	Abreviews	特記事項
ICC/IF		1/50.
Flow Cyt (Intra)		Use 0.2µl for 10 ⁶ cells. ab199093 - Rabbit monoclonal IgG (Alexa Fluor® 647), is suitable for use as an isotype control with this antibody.

ターゲット情報

機能	Catalyzes the concomitant phosphorylation of a threonine and a tyrosine residue in a Thr-Glu-Tyr sequence located in MAP kinases. Activates ERK1 and ERK2 MAP kinases.
組織特異性	Widely expressed, with extremely low levels in brain.
関連疾患	Defects in MAP2K1 are a cause of cardiofaciocutaneous syndrome (CFC syndrome) [MIM:115150]; also known as cardio-facio-cutaneous syndrome. CFC syndrome is characterized by a distinctive facial appearance, heart defects and mental retardation. Heart defects include pulmonic stenosis, atrial septal defects and hypertrophic cardiomyopathy. Some affected individuals present with ectodermal abnormalities such as sparse, friable hair, hyperkeratotic skin lesions and a generalized ichthyosis-like condition. Typical facial features are similar to Noonan syndrome. They include high forehead with bitemporal constriction, hypoplastic supraorbital ridges, downslanting palpebral fissures, a depressed nasal bridge, and posteriorly angulated ears with prominent helices. The inheritance of CFC syndrome is autosomal dominant.
配列類似性	Belongs to the protein kinase superfamily. STE Ser/Thr protein kinase family. MAP kinase kinase subfamily. Contains 1 protein kinase domain.
翻訳後修飾	Phosphorylation on Ser/Thr by MAP kinase kinase kinases (RAF or MEKK1) regulates positively the kinase activity. Acetylation by Yersinia yopJ prevents phosphorylation and activation, thus blocking the MAPK signaling pathway.

画像

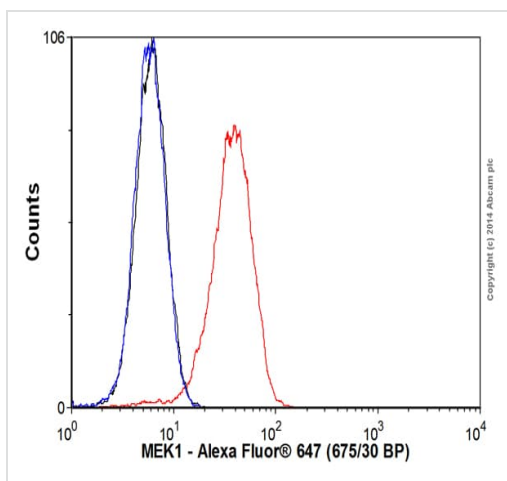


Immunocytochemistry/ Immunofluorescence - Alexa Fluor® 647 Anti-MEK1 antibody [E342] (ab193986)

ab193986 staining MEK1 in HeLa cells. The cells were fixed with 100% methanol (10 min) and then blocked in 1% BSA/10% normal goat serum/0.3M glycine in 0.1% PBS-Triton X-100 for 1hr. The cells were then incubated with ab193986 at a working dilution of 1 in 50 (shown in red) and **ab7291** (Mouse monoclonal [DM1A] to alpha Tubulin) at 1µg/ml overnight at +4°C, followed by a further incubation at room temperature for 1hr with an AlexaFluor® 488 Goat anti-mouse IgG (H&L - preadsorbed) secondary (**ab150117**) at 2 µg/ml (shown in green). Nuclear DNA was labelled in blue with DAPI.

This product gave a positive signal in 4% formaldehyde (10 min) fixed HeLa cells under the same testing conditions.

Image was taken with a Confocal microscope (Leica microsystems, TCS SP8).



Flow Cytometry (Intracellular) - Alexa Fluor® 647 Anti-MEK1 antibody [E342] (ab193986)

Overlay histogram showing HeLa cells stained with ab193986 (red line). The cells were fixed with 80% methanol (5 min) and then permeabilized with 0.1% PBS-Tween for 20 min. The cells were then incubated in 1x PBS / 10% normal goat serum / 0.3M glycine to block non-specific protein-protein interactions followed by the antibody (ab193986, 0.2µl/1x10⁶ cells) for 30 min at 22°C. Isotype control antibody (black line) was rabbit IgG (monoclonal) (Alexa Fluor® 647) (0.1µg/1x10⁶ cells) for 30 min at 22°C. Unlabelled sample (blue line) was also used as a control.

Acquisition of >5,000 events were collected using a 25mW red solid state diode laser (635nm) and 675/30 bandpass filter.

This antibody gave a positive signal in HeLa fixed with 4% formaldehyde (10 min)/permeabilized with 0.1% PBS-Tween for 20 min used under the same conditions.

Why choose a recombinant antibody?



Research with confidence
Consistent and reproducible results



Long-term and scalable supply
Recombinant technology



Success from the first experiment
Confirmed specificity



Ethical standards compliant
Animal-free production

Alexa Fluor® 647 Anti-MEK1 antibody [E342]
(ab193986)

Please note: All products are "FOR RESEARCH USE ONLY. NOT FOR USE IN DIAGNOSTIC PROCEDURES"

Our Abpromise to you: Quality guaranteed and expert technical support

- Replacement or refund for products not performing as stated on the datasheet
- Valid for 12 months from date of delivery
- Response to your inquiry within 24 hours
- We provide support in Chinese, English, French, German, Japanese and Spanish
- Extensive multi-media technical resources to help you
- We investigate all quality concerns to ensure our products perform to the highest standards

If the product does not perform as described on this datasheet, we will offer a refund or replacement. For full details of the Abpromise, please visit <https://www.abcam.co.jp/abpromise> or contact our technical team.

Terms and conditions

- Guarantee only valid for products bought direct from Abcam or one of our authorized distributors