




# Alexa Fluor® 594 Anti-TOMM20 antibody [EPR15581-54] - Mitochondrial Marker ab210665

リコンビナント RabMAb

## 3 References [画像数 2](#)

### 製品の概要

|              |   |
|--------------|---|
| 製品名          | Alexa Fluor® 594 Anti-TOMM20 antibody [EPR15581-54] - Mitochondrial Marker  |
| 製品の詳細        | Alexa Fluor® 594 Rabbit monoclonal [EPR15581-54] to TOMM20 - Mitochondrial Marker   |
| 由来種          | Rabbit  |
| 標識           | Alexa Fluor® 594. Ex: 590nm, Em: 617nm  |
| アプリケーション     | 適用あり: ICC/IF  |
| 種交差性         | 交差種: Human<br>交差が予測される動物種: Mouse, Rat    |
| 免疫原          | Recombinant fragment within Human TOMM20 aa 1 to the C-terminus. The exact immunogen sequence used to generate this antibody is proprietary information. If additional detail on the immunogen is needed to determine the suitability of the antibody for your needs, please <b><u>contact</u></b> our Scientific Support team to discuss your requirements.<br>Database link: <a href="#">Q15388</a><br> <a href="#">Run BLAST with</a>  <a href="#">Run BLAST with</a>  |
| ポジティブ・コントロール | ICC/IF: HeLa cells  |
| 特記事項         | This product is a recombinant monoclonal antibody, which offers several advantages including: <ul style="list-style-type: none"><li>- High batch-to-batch consistency and reproducibility</li><li>- Improved sensitivity and specificity</li><li>- Long-term security of supply</li><li>- Animal-free production</li></ul> For more information <b><u>see here</u></b> .<br>Our RabMAb® technology is a patented hybridoma-based technology for making rabbit monoclonal antibodies. For details on our patents, please refer to <b><u>RabMAb® patents</u></b> .<br>Alexa Fluor® is a registered trademark of Molecular Probes, Inc, a Thermo Fisher Scientific Company. The Alexa Fluor® dye included in this product is provided under an intellectual property license from Life Technologies Corporation. As this product contains the Alexa Fluor® dye, the purchase of this product conveys to the buyer the non-transferable right to use the purchased product and components of the product only in research conducted by the buyer (whether the buyer is an academic or for-profit entity). As this product contains the Alexa Fluor® dye the sale of this product is expressly conditioned on the buyer not using the product or its components, or any materials made using the product or its components, in any activity to generate revenue, which |

may include, but is not limited to use of the product or its components: in manufacturing; (ii) to provide a service, information, or data in return for payment (iii) for therapeutic, diagnostic or prophylactic purposes; or (iv) for resale, regardless of whether they are sold for use in research. For information on purchasing a license to this product for purposes other than research, contact Life Technologies Corporation, 5781 Van Allen Way, Carlsbad, CA 92008 USA or [outlicensing@thermofisher.com](mailto:outlicensing@thermofisher.com).

## 製品の特性

|        |  |
|--------|--|
| 製品の状態  | Liquid   |
| 保存方法   | Shipped at 4°C. Store at +4°C short term (1-2 weeks). Upon delivery aliquot. Store at -20°C. Avoid freeze / thaw cycle. Store In the Dark. |
| バッファー  | pH: 7.40<br>Preservative: 0.02% Sodium azide<br>Constituents: 30% Glycerol (glycerin, glycerine), 1% BSA, PBS                              |
| 精製度    | Protein A purified   |
| ポリ/モノ  | モノクローナル  |
| クローン名  | EPR15581-54  |
| アイソタイプ | IgG  |

## アプリケーション

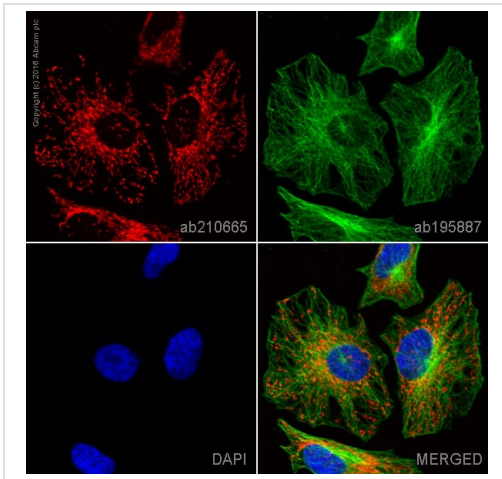
**The Abpromise guarantee**      **Abpromise保証は、次のテスト済みアプリケーションにおけるab210665の使用に適用されます**  
アプリケーションノートには、推奨の開始希釈率がありますが、適切な希釈率につきましてはご検討ください。

| アプリケーション | Abreviews | 特記事項   |
|----------|-----------|--|
| ICC/IF   |           | 1/1000.<br>This product gave a positive signal in HeLa cells fixed with 4% formaldehyde (10 min) |

## ターゲット情報

|       |   |
|-------|---|
| 機能    | Central component of the receptor complex responsible for the recognition and translocation of cytosolically synthesized mitochondrial preproteins. Together with TOM22 functions as the transit peptide receptor at the surface of the mitochondrion outer membrane and facilitates the movement of preproteins into the TOM40 translocation pore. |
| 配列類似性 | Belongs to the Tom20 family.  |
| 細胞内局在 | Mitochondrion outer membrane.   |





## 画像



ab210665 staining TOMM20 in HeLa cells. The cells were fixed with 4% formaldehyde (10 min), permeabilized with 0.1% Triton X-100 for 5 minutes and then blocked with 1% BSA/10% normal goat serum/0.3M glycine in 0.1% PBS-Tween for 1h. The cells were then incubated overnight at +4°C with ab210665 at 1/1000 dilution (pseudocolored in red) and **ab195887**, Mouse monoclonal to alpha Tubulin (Alexa Fluor® 488), at 1/250 dilution (shown in green). Nuclear DNA was labelled with DAPI (shown in blue). Image was taken with a confocal microscope (Leica-Microsystems, TCS SP8).

Immunocytochemistry/ Immunofluorescence - Alexa Fluor® 594 Anti-TOMM20 antibody [EPR15581-54] - Mitochondrial Marker (ab210665)

Why choose a recombinant antibody?

|  |  |
|--|--|
| <br><b>Research with confidence</b><br>Consistent and reproducible results | <br><b>Long-term and scalable supply</b><br>Recombinant technology |
| <br><b>Success from the first experiment</b><br>Confirmed specificity     | <br><b>Ethical standards compliant</b><br>Animal-free production  |

Alexa Fluor® 594 Anti-TOMM20 antibody [EPR15581-54] - Mitochondrial Marker (ab210665)

**Please note:** All products are "FOR RESEARCH USE ONLY. NOT FOR USE IN DIAGNOSTIC PROCEDURES"

### Our Abpromise to you: Quality guaranteed and expert technical support

- Replacement or refund for products not performing as stated on the datasheet
- Valid for 12 months from date of delivery
- Response to your inquiry within 24 hours
- We provide support in Chinese, English, French, German, Japanese and Spanish
- Extensive multi-media technical resources to help you
- We investigate all quality concerns to ensure our products perform to the highest standards

If the product does not perform as described on this datasheet, we will offer a refund or replacement. For full details of the Abpromise, please visit <https://www.abcam.co.jp/abpromise> or contact our technical team.

## **Terms and conditions**

---

- Guarantee only valid for products bought direct from Abcam or one of our authorized distributors