

# Alexa Fluor® 594 Mouse IgG2b, kappa monoclonal [7E10G10] - Isotype Control ab178002

画像数 1

### 製品の概要

製品名	Alexa Fluor® 594 Mouse IgG2b, kappa monoclonal [7E10G10] - Isotype Control
標識	Alexa Fluor® 594. Ex: 590nm, Em: 617nm
特異性	ab178002 was raised in mouse against a yeast-specific protein making it unsuitable for yeast experiments. ab178002 is a suitable control for Human, Rat, Mouse, Monkey, others untested.
アプリケーション	<b>適用あり:</b> ICC/IF
特記事項	<p>Isotype controls are used to confirm that the primary antibody binding is specific and not a result of non-specific Fc receptor binding or other protein interactions. The isotype control antibody should match the primary antibody's host species, isotype, and possible conjugation. The Control performed appropriately in all materials and platforms that were tested.</p> <p>Product was previously marketed under the MitoSciences sub-brand.</p> <p>The Life Science industry has been in the grips of a reproducibility crisis for a number of years. Abcam is leading the way in addressing this with our range of recombinant monoclonal antibodies and knockout edited cell lines for gold-standard validation. Please check that this product meets your needs before purchasing.</p> <p>If you have any questions, special requirements or concerns, please send us an inquiry and/or contact our Support team ahead of purchase. Recommended alternatives for this product can be found below, along with publications, customer reviews and Q&amp;As</p>

### 製品の特性

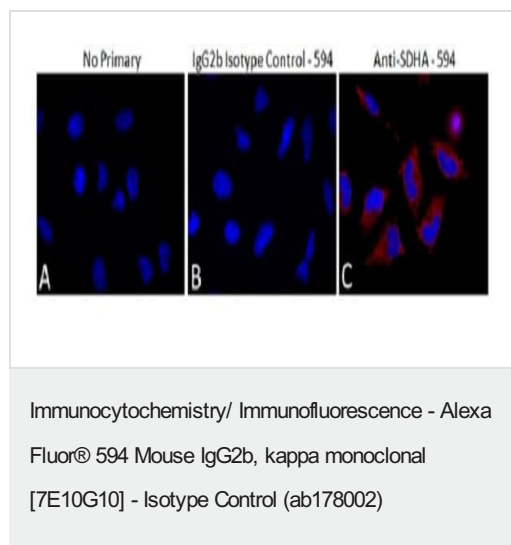
製品の状態	Liquid
保存方法	Shipped at 4°C. Upon delivery aliquot. Store at +4°C. Store In the Dark.
バッファー	Preservative: 0.02% Sodium azide Constituents: 68% PBS, 30% Glycerol (glycerin, glycerine), 1% BSA
精製度	Ammonium Sulphate Precipitation
ポリ/モノ	モノクローナル
クローン名	7E10G10
アイソタイプ	IgG2b
軽鎖の種類	kappa

## アプリケーション

**The Abpromise guarantee** Abpromise保証は、次のテスト済みアプリケーションにおけるab178002の使用に適用されます  
アプリケーションノートには、推奨の開始希釈率がありますが、適切な希釈率につきましてはご確認ください。

アプリケーション	Abreviews	特記事項
ICC/IF		Use at an assay dependent concentration.

## 画像



Immunocytochemistry data for ab178002. All panels show HeLa cells stained with DAPI as well as; a no primary control (A), ab178002 at 1 µg/mL (B), an Alexa 594 anti-SDHA conjugated antibody (**ab170172**) at 1 µg/mL (C).

Cells were PFA fixed and stored in 0.02% azide/PBS in 4°C. Cells were blocked with 10% GS for 2 hours, primary was diluted in 10% GS and incubated for 2 hours, cells were washed 3X with 1% GS and DAPI was added for 10 minutes in 1% GS.

**Please note:** All products are "FOR RESEARCH USE ONLY. NOT FOR USE IN DIAGNOSTIC PROCEDURES"

## Our Abpromise to you: Quality guaranteed and expert technical support

- Replacement or refund for products not performing as stated on the datasheet
- Valid for 12 months from date of delivery
- Response to your inquiry within 24 hours
- We provide support in Chinese, English, French, German, Japanese and Spanish
- Extensive multi-media technical resources to help you
- We investigate all quality concerns to ensure our products perform to the highest standards

If the product does not perform as described on this datasheet, we will offer a refund or replacement. For full details of the Abpromise, please visit <https://www.abcam.co.jp/abpromise> or contact our technical team.

## Terms and conditions

- Guarantee only valid for products bought direct from Abcam or one of our authorized distributors