


Alexa Fluor® 488 Anti-SDHA antibody [2E3GC12FB2AE2] ab154473

画像数 4

製品の概要

製品名	Alexa Fluor® 488 Anti-SDHA antibody [2E3GC12FB2AE2]
製品の詳細	Alexa Fluor® 488 Mouse monoclonal [2E3GC12FB2AE2] to SDHA
由来種	Mouse
標識	Alexa Fluor® 488. Ex: 495nm, Em: 519nm
アプリケーション	適用あり: Flow Cyt (Intra), ICC/IF
種交差性	交差種: Human 交差が予測される動物種: Mouse, Rat, Cow, Dog 
免疫原	Full length native protein (purified) corresponding to Cow SDHA.
ポジティブ・コントロール	ICC/IF: HeLa and HDFn cells. Flow Cyt (Intra): HeLa cells.
特記事項	<p>Alexa Fluor® is a registered trademark of Molecular Probes, Inc, a Thermo Fisher Scientific Company. The Alexa Fluor® dye included in this product is provided under an intellectual property license from Life Technologies Corporation. As this product contains the Alexa Fluor® dye, the purchase of this product conveys to the buyer the non-transferable right to use the purchased product and components of the product only in research conducted by the buyer (whether the buyer is an academic or for-profit entity). As this product contains the Alexa Fluor® dye the sale of this product is expressly conditioned on the buyer not using the product or its components, or any materials made using the product or its components, in any activity to generate revenue, which may include, but is not limited to use of the product or its components: in manufacturing; (ii) to provide a service, information, or data in return for payment (iii) for therapeutic, diagnostic or prophylactic purposes; or (iv) for resale, regardless of whether they are sold for use in research. For information on purchasing a license to this product for purposes other than research, contact Life Technologies Corporation, 5781 Van Allen Way, Carlsbad, CA 92008 USA or outlicensing@thermofisher.com.</p>

The Life Science industry has been in the grips of a reproducibility crisis for a number of years. Abcam is leading the way in addressing this with our range of recombinant monoclonal antibodies and knockout edited cell lines for gold-standard validation. Please check that this product meets your needs before purchasing.

If you have any questions, special requirements or concerns, please send us an inquiry and/or contact our Support team ahead of purchase. Recommended alternatives for this product can be found below, along with publications, customer reviews and Q&As

Product was previously marketed under the MitoSciences sub-brand.

製品の特性

製品の状態	Liquid
保存方法	Shipped at 4°C. Store at +4°C short term (1-2 weeks). Upon delivery aliquot. Store at -20°C. Avoid freeze / thaw cycle. Stable for 12 months at -20°C. Store In the Dark.
バッファー	Preservative: 0.02% Sodium azide Constituents: 1% BSA, PBS, 30% Glycerol (glycerin, glycerine)
精製度	IgG fraction
特記事項 (精製)	Purity is near homogeneity as judged by SDS-PAGE. ab154473 was produced in vitro using hybridomas grown in serum-free medium, and then purified by biochemical fractionation.
ポリ/モノ	モノクローナル
クローン名	2E3GC12FB2AE2
アイソタイプ	IgG1

アプリケーション

The Abpromise guarantee **Abpromise保証は、** 次のテスト済みアプリケーションにおけるab154473の使用に適用されます
アプリケーションノートには、推奨の開始希釈率がありますが、適切な希釈率につきましてはご検討ください。

アプリケーション	Abreviews	特記事項
Flow Cyt (Intra)		Use a concentration of 0.2 µg/ml. ab171463 - Mouse monoclonal IgG1, is suitable for use as an isotype control with this antibody.
ICC/IF		Use a concentration of 1 µg/ml.

ターゲット情報

機能	Flavoprotein (FP) subunit of succinate dehydrogenase (SDH) that is involved in complex II of the mitochondrial electron transport chain and is responsible for transferring electrons from succinate to ubiquinone (coenzyme Q).
パスウェイ	Carbohydrate metabolism; tricarboxylic acid cycle; fumarate from succinate (eukaryal route): step 1/1.
関連疾患	Defects in SDHA are a cause of mitochondrial complex II deficiency (MT-C2D) [MIM:252011]. A disorder of the mitochondrial respiratory chain with heterogeneous clinical manifestations. Clinical features include psychomotor regression in infants, poor growth with lack of speech development, severe spastic quadriplegia, dystonia, progressive leukoencephalopathy, muscle weakness, exercise intolerance, cardiomyopathy. Some patients manifest Leigh syndrome or Kearns-Sayre syndrome. Defects in SDHA are a cause of Leigh syndrome (LS) [MIM:256000]. LS is a severe disorder characterized by bilaterally symmetrical necrotic lesions in subcortical brain regions. Defects in SDHA are the cause of cardiomyopathy dilated type 1GG (CMD1GG) [MIM:613642]. CMD1GG is a disorder characterized by ventricular dilation and impaired systolic function,

resulting in congestive heart failure and arrhythmia. Patients are at risk of premature death.

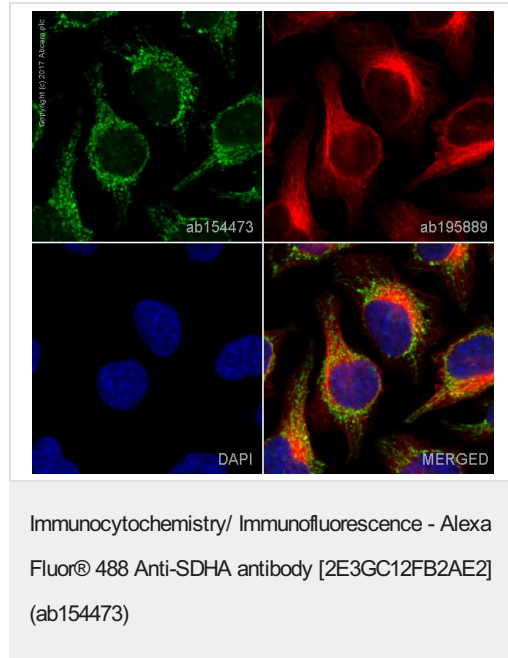
配列類似性

Belongs to the FAD-dependent oxidoreductase 2 family. FRD/SDH subfamily.

細胞内局在

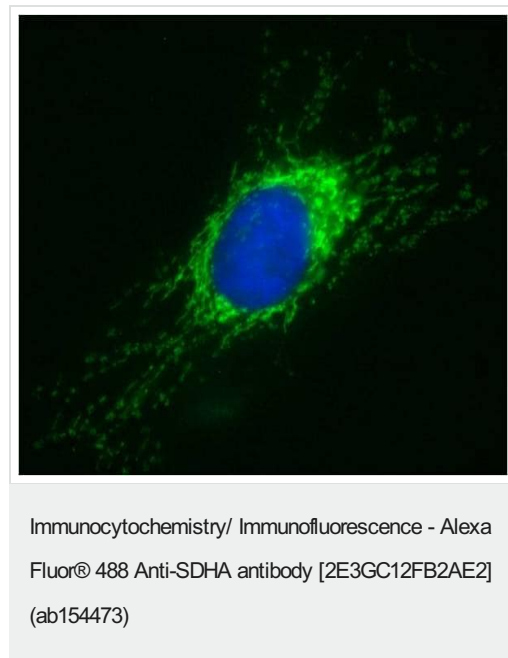
Mitochondrion inner membrane.

画像

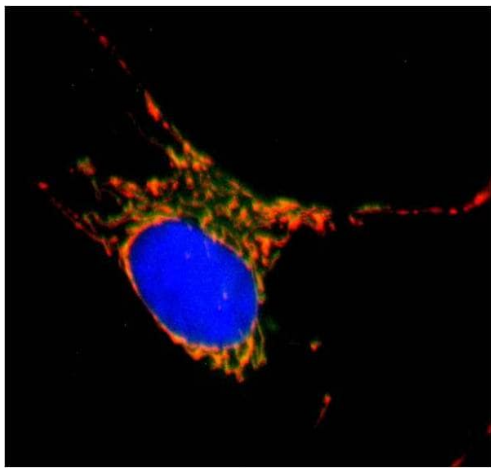


ab154473 staining SDHA in HeLa cells. The cells were fixed with 4% formaldehyde (10 min), permeabilized with 0.1% Triton X-100 for 5 minutes and then blocked with 1% BSA/10% normal goat serum/0.3M glycine in 0.1% PBS-Tween for 1h. The cells were then incubated overnight at +4°C with ab154473 at 1/1000 dilution (shown in green) and **ab195889**, Mouse monoclonal to alpha Tubulin (Alexa Fluor® 594), at 1/250 dilution (shown in red). Nuclear DNA was labelled with DAPI (shown in blue).

Image was taken with a confocal microscope (Leica-Microsystems, TCS SP8).

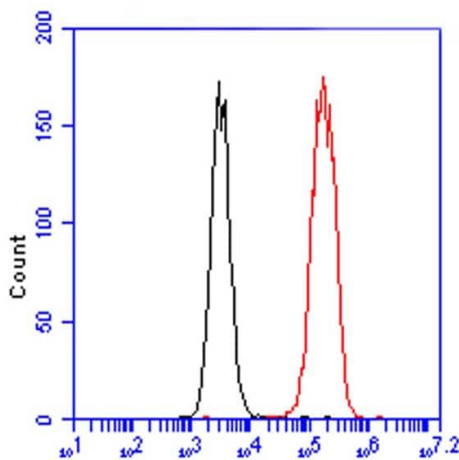


Immunocytochemistry with HeLa cells (100x) were stained with anti-SDHA Alexa-488 antibody (1.0 µg/mL, ab154473) in green and DAPI in blue, as a nuclear stain.



Immunocytochemistry/ Immunofluorescence - Alexa Fluor® 488 Anti-SDHA antibody [2E3GC12FB2AE2] (ab154473)

Immunocytochemistry with HDFn (100x) cells were stained with Anti-SDHA Alexa-488 antibody (1.0 µg/mL, ab154473) in green, Anti-HSP60 (1/1000, [ab46798](#)) as red, and DAPI in blue, as a nuclear stain. Secondary antibody used was goat anti-rabbit dyelight-594 (1/1000, [ab96897](#)).



Flow Cytometry (Intracellular) - Alexa Fluor® 488 Anti-SDHA antibody [2E3GC12FB2AE2] (ab154473)

Flow Cytometry for Anti-SDHA Alexa-488 antibody (ab154473) stained HeLa cells. Flow cytometry results of unstained cells (black) and 0.2 µg/mL anti-SDHA Alexa-488 (red) stained cells.

Please note: All products are "FOR RESEARCH USE ONLY. NOT FOR USE IN DIAGNOSTIC PROCEDURES"

Our Abpromise to you: Quality guaranteed and expert technical support

- Replacement or refund for products not performing as stated on the datasheet
- Valid for 12 months from date of delivery
- Response to your inquiry within 24 hours

- We provide support in Chinese, English, French, German, Japanese and Spanish
- Extensive multi-media technical resources to help you
- We investigate all quality concerns to ensure our products perform to the highest standards

If the product does not perform as described on this datasheet, we will offer a refund or replacement. For full details of the Abpromise, please visit <https://www.abcam.co.jp/abpromise> or contact our technical team.

Terms and conditions

- Guarantee only valid for products bought direct from Abcam or one of our authorized distributors