

# Alexa Fluor® 488 Anti-FOXL2 antibody [EPR23523-68] ab275152

リコンビナント

画像数 2

### 製品の概要

製品名	Alexa Fluor® 488 Anti-FOXL2 antibody [EPR23523-68]
製品の詳細	Alexa Fluor® 488 Rabbit monoclonal [EPR23523-68] to FOXL2
由来種	Rabbit
標識	Alexa Fluor® 488. Ex: 495nm, Em: 519nm
アプリケーション	<b>適用あり:</b> IHC-P
種交差性	<b>交差種:</b> Mouse, Rat
免疫原	Synthetic peptide. This information is proprietary to Abcam and/or its suppliers.
ポジティブ・コントロール	IHC-P: Mouse normal ovary.
特記事項	<p>This product is a recombinant monoclonal antibody, which offers several advantages including:</p> <ul style="list-style-type: none"> <li>- High batch-to-batch consistency and reproducibility</li> <li>- Improved sensitivity and specificity</li> <li>- Long-term security of supply</li> <li>- Animal-free production</li> </ul> <p>For more information <a href="#">see here</a>.</p> <p>Our RabMAb® technology is a patented hybridoma-based technology for making rabbit monoclonal antibodies. For details on our patents, please refer to <a href="#">RabMAb® patents</a>.</p> <p>Alexa Fluor® is a registered trademark of Molecular Probes, Inc, a Thermo Fisher Scientific Company. The Alexa Fluor® dye included in this product is provided under an intellectual property license from Life Technologies Corporation. As this product contains the Alexa Fluor® dye, the purchase of this product conveys to the buyer the non-transferable right to use the purchased product and components of the product only in research conducted by the buyer (whether the buyer is an academic or for-profit entity). As this product contains the Alexa Fluor® dye the sale of this product is expressly conditioned on the buyer not using the product or its components, or any materials made using the product or its components, in any activity to generate revenue, which may include, but is not limited to use of the product or its components: (i) in manufacturing; (ii) to provide a service, information, or data in return for payment (iii) for therapeutic, diagnostic or prophylactic purposes; or (iv) for resale, regardless of whether they are sold for use in research. For information on purchasing a license to this product for purposes other than research, contact Life Technologies Corporation, 5781 Van Allen Way, Carlsbad, CA 92008 USA or <a href="mailto:outlicensing@thermofisher.com">outlicensing@thermofisher.com</a>.</p>

## 製品の特性

製品の状態	Liquid
保存方法	Shipped at 4°C. Store at +4°C short term (1-2 weeks). Upon delivery aliquot. Store at -20°C long term. Avoid freeze / thaw cycle. Store In the Dark.
バッファー	pH: 7.40 Preservative: 0.02% Sodium azide Constituents: 30% Glycerol (glycerin, glycerine), 1% BSA, 68.98% PBS
精製度	Protein A purified
ポリ/モノ	モノクローナル
クローン名	EPR23523-68
アイソタイプ	IgG

## アプリケーション

**The Abpromise guarantee**      **Abpromise保証は、** 次のテスト済みアプリケーションにおけるab275152の使用に適用されます  
アプリケーションノートには、推奨の開始希釈率がありますが、適切な希釈率につきましてはご検討ください。

アプリケーション	Abreviews	特記事項
IHC-P		1/100. Perform heat mediated antigen retrieval with Tris/EDTA buffer pH 9.0 before commencing with IHC staining protocol.

## ターゲット情報

機能	Transcriptional regulator. Critical factor essential for ovary differentiation and maintenance, and repression of the genetic program for somatic testis determination. Prevents trans-differentiation of ovary to testis through transcriptional repression of the Sertoli cell-promoting gene SOX9 (By similarity). Has apoptotic activity in ovarian cells. Suppresses ESR1-mediated transcription of PTGS2/COX2 stimulated by tamoxifen (By similarity). Is a regulator of CYP19 expression (By similarity). Participates in SMAD3-dependent transcription of FST via the intronic SMAD-binding element (By similarity). Is a transcriptional repressor of STAR. Activates SIRT1 transcription under cellular stress conditions. Activates transcription of OSR2.
組織特異性	In addition to its expression in the developing eyelid, it is transcribed very early in somatic cells of the developing gonad (before sex determination) and its expression persists in the follicular cells of the adult ovary.
関連疾患	Defects in FOXL2 are a cause of blepharophimosis, ptosis, and epicanthus inversus syndrome (BPES) [MIM:110100]; also known as blepharophimosis syndrome. It is an autosomal dominant disorder characterized by eyelid dysplasia, small palpebral fissures, drooping eyelids and a skin fold running inward and upward from the lower lid. In type IBPSE (BPES1) eyelid abnormalities are associated with female infertility. Affected females show an ovarian deficit due to primary amenorrhea or to premature ovarian failure (POF). In type IIBPSE (BPES2) affected individuals show only the eyelid defects. There is a mutational hotspot in the region coding for the poly-Ala domain, since 30% of all mutations in the ORF lead to poly-Ala expansions, resulting mainly in BPES type II.

Defects in FOXL2 are a cause of premature ovarian failure type 3 (POF3) [MIM:608996]. An ovarian disorder defined as the cessation of ovarian function under the age of 40 years. It is characterized by oligomenorrhea or amenorrhea, in the presence of elevated levels of serum gonadotropins and low estradiol.

#### 配列類似性

Contains 1 fork-head DNA-binding domain.

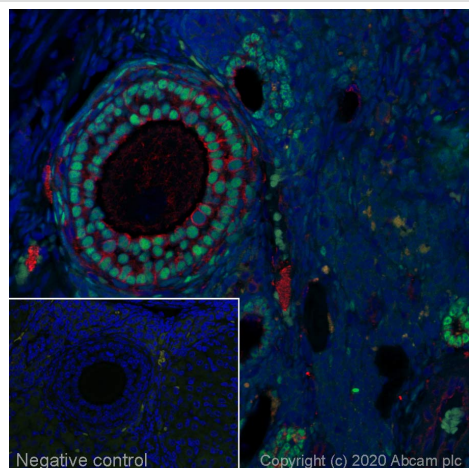
#### 翻訳後修飾

Sumoylated by SUMO1; sumoylation is required for transcriptional repression activity.

#### 細胞内局在

Nucleus.

#### 画像



Immunohistochemistry (Formalin/PFA-fixed paraffin-embedded sections) - Alexa Fluor® 488 Anti-FOXL2 antibody [EPR23523-68] (ab275152)

Immunofluorescence staining of FOXL2 staining in a section of formalin-fixed paraffin-embedded mouse normal ovary\*.

Performed on a Leica BOND. The section was pre-treated using heat mediated antigen retrieval with EDTA (pH9.0) using retrieval settings of 110°C for 20 minutes. The section was then incubated at room temperature for 1 hour with ab275152 at 1/100 dilution (shown in green) and counterstained using **ab195884**, Rat monoclonal to Tubulin (Alexa Fluor® 647), at 1/250 dilution (shown in red). Nuclear DNA was labelled with DAPI (shown in blue). The section was then mounted using Dako Fluorescence Mounting Medium®.

Image was taken with a confocal microscope (Leica-Microsystems, TCS SP8).

For other IHC staining systems (automated and non-automated), customers should optimize variable parameters such as antigen retrieval conditions, antibody concentrations and incubation times.

#### Why choose a recombinant antibody?



Research with confidence  
Consistent and reproducible results



Long-term and scalable supply  
Recombinant technology



Success from the first experiment  
Confirmed specificity



Ethical standards compliant  
Animal-free production

Alexa Fluor® 488 Anti-FOXL2 antibody [EPR23523-68] (ab275152)

### **Our Abpromise to you: Quality guaranteed and expert technical support**

---

- Replacement or refund for products not performing as stated on the datasheet
- Valid for 12 months from date of delivery
- Response to your inquiry within 24 hours
  
- We provide support in Chinese, English, French, German, Japanese and Spanish
- Extensive multi-media technical resources to help you
- We investigate all quality concerns to ensure our products perform to the highest standards

If the product does not perform as described on this datasheet, we will offer a refund or replacement. For full details of the Abpromise, please visit <https://www.abcam.co.jp/abpromise> or contact our technical team.

### **Terms and conditions**

---

- Guarantee only valid for products bought direct from Abcam or one of our authorized distributors