

### Anti-Aldolase B antibody ab137628

画像 2

医薬用外劇物

#### 製品の概要

製品名	Anti-Aldolase B antibody
製品の詳細	Rabbit polyclonal to Aldolase B
由来種	Rabbit
アプリケーション	適用あり: ICC/IF, WB
種交差性	交差種: Mouse, Human 交差が予測される動物種: Rat, Rabbit, Cow 
免疫原	Recombinant fragment corresponding to Human Aldolase B aa 84-288.
ポジティブ・コントロール	293T, A431, Jurkat, Raji whole cells lysates; mouse liver lysate; methanol-fixed A431 cells; Breast carcinoma.
特記事項	<p>The Life Science industry has been in the grips of a reproducibility crisis for a number of years. Abcam is leading the way in addressing this with our range of recombinant monoclonal antibodies and knockout edited cell lines for gold-standard validation. Please check that this product meets your needs before purchasing.</p> <p>If you have any questions, special requirements or concerns, please send us an inquiry and/or contact our Support team ahead of purchase. Recommended alternatives for this product can be found below, along with publications, customer reviews and Q&amp;As</p>

#### 製品の特性

製品の状態	Liquid
保存方法	Shipped at 4°C. Upon delivery aliquot. Store at -20°C or -80°C. Avoid freeze / thaw cycle.
バッファー	pH: 7.00 Preservative: 0.01% Thimerosal (merthiolate) Constituents: 1.21% Tris, 0.75% Glycine, 20% Glycerol (glycerin, glycerine)
精製度	Immunogen affinity purified
ポリ/モノ	ポリクローナル
アイソタイプ	IgG

## アプリケーション

**The Abpromise guarantee** Abpromise保証は、次のテスト済みアプリケーションにおけるab137628の使用に適用されます  
アプリケーションノートには、推奨の開始希釈率がありますが、適切な希釈率につきましてはご確認ください。

アプリケーション	Abreviews	特記事項
ICC/IF		1/100 - 1/1000.
WB		1/1000 - 1/10000. Predicted molecular weight: 39 kDa.

## ターゲット情報

### パスウェイ

Carbohydrate degradation; glycolysis; D-glyceraldehyde 3-phosphate and glycerone phosphate from D-glucose: step 4/4.

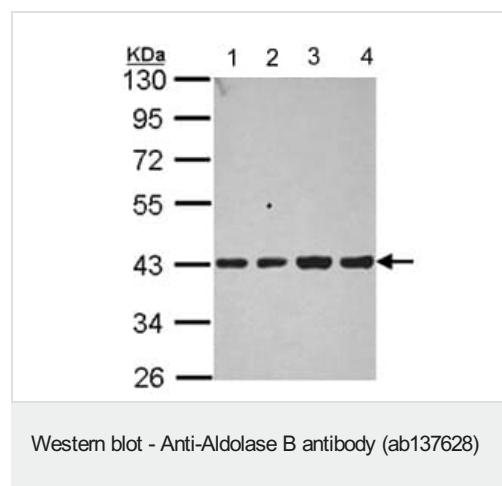
### 関連疾患

Defects in ALDOB are the cause of hereditary fructose intolerance (HFI) [MIM:229600]. HFI is an autosomal recessive disease that results in an inability to metabolize fructose and related sugars. Complete exclusion of fructose results in dramatic recovery; however, if not treated properly, HFI subjects suffer episodes of hypoglycemia, general ill condition, and risk of death the remainder of life.

### 配列類似性

Belongs to the class I fructose-bisphosphate aldolase family.

## 画像



**All lanes :** Anti-Aldolase B antibody (ab137628) at 1/1000 dilution

**Lane 1 :** 293T whole cells lysate

**Lane 2 :** A431 whole cells lysate

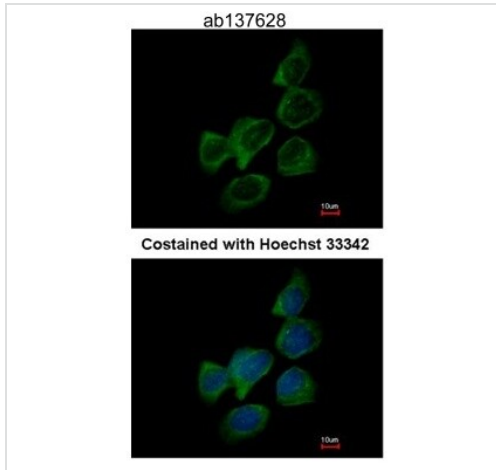
**Lane 3 :** Jurkat whole cells lysate

**Lane 4 :** Raji whole cells lysate

Lysates/proteins at 30 µg per lane.

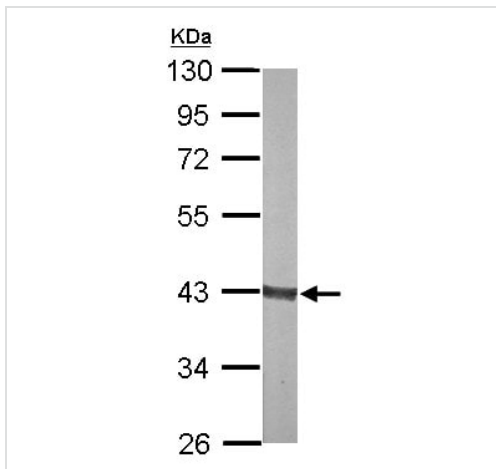
**Predicted band size:** 39 kDa

10% SDS Page



Immunofluorescence analysis of methanol-fixed A431 cells laebelling Aldolase B using ab137628 antibody at 1/200 dilution. Lower panel represents cells costained with Hoechst 33342.

Immunocytochemistry/ Immunofluorescence - Anti-Aldolase B antibody (ab137628)



Anti-Aldolase B antibody (ab137628) at 1/1000 dilution + mouse liver whole cells lysate at 30 µg

**Predicted band size:** 39 kDa

Western blot - Anti-Aldolase B antibody (ab137628)

**Please note:** All products are "FOR RESEARCH USE ONLY. NOT FOR USE IN DIAGNOSTIC PROCEDURES"

### Our Abpromise to you: Quality guaranteed and expert technical support

- Replacement or refund for products not performing as stated on the datasheet
- Valid for 12 months from date of delivery
- Response to your inquiry within 24 hours
- We provide support in Chinese, English, French, German, Japanese and Spanish
- Extensive multi-media technical resources to help you

- We investigate all quality concerns to ensure our products perform to the highest standards

If the product does not perform as described on this datasheet, we will offer a refund or replacement. For full details of the Abpromise, please visit <https://www.abcam.co.jp/abpromise> or contact our technical team.

### **Terms and conditions**

---

- Guarantee only valid for products bought direct from Abcam or one of our authorized distributors