

Anti-ALDH3A1 antibody [EPR7406] ab129022

リコンビナント RabMAb

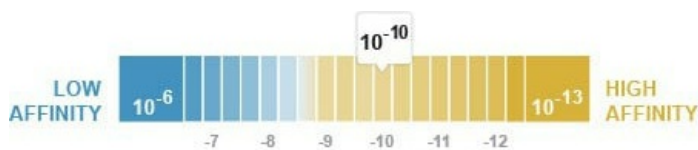
5 References 画像数 3

製品の概要

製品名	Anti-ALDH3A1 antibody [EPR7406]
製品の詳細	Rabbit monoclonal [EPR7406] to ALDH3A1
由来種	Rabbit
アプリケーション	適用あり: WB 適用なし: Flow Cyt, ICC/IF, IHC-P or IP
種交差性	交差種: Mouse, Rat, Human
免疫原	Synthetic peptide. This information is proprietary to Abcam and/or its suppliers.
ポジティブ・コントロール	A549, Mouse eyeball and Rat eyeball lysates.
特記事項	This product is a recombinant monoclonal antibody, which offers several advantages including: <ul style="list-style-type: none"> - High batch-to-batch consistency and reproducibility - Improved sensitivity and specificity - Long-term security of supply - Animal-free production For more information see here . Our RabMAb® technology is a patented hybridoma-based technology for making rabbit monoclonal antibodies. For details on our patents, please refer to RabMAb® patents .

製品の特性

製品の状態	Liquid
保存方法	Shipped at 4°C. Store at -20°C. Stable for 12 months at -20°C.
解離定数 (K _D 値)	K _D = 9.00 x 10 ⁻¹⁰ M



[Learn more about K_D](#)

バッファー	pH: 7.20 Preservative: 0.01% Sodium azide Constituents: 9% PBS, 40% Glycerol (glycerin, glycerine), 0.05% BSA, 50% Tissue culture
-------	---

	supernatant
精製度	Protein A purified
ポリ/モノ	モノクローナル
クローン名	EPR7406
アイソタイプ	IgG

アプリケーション

The Abpromise guarantee **Abpromise保証は、**次のテスト済みアプリケーションにおけるab129022の使用に適用されます
 アプリケーションノートには、推奨の開始希釈率がありますが、適切な希釈率につきましてはご検討ください。

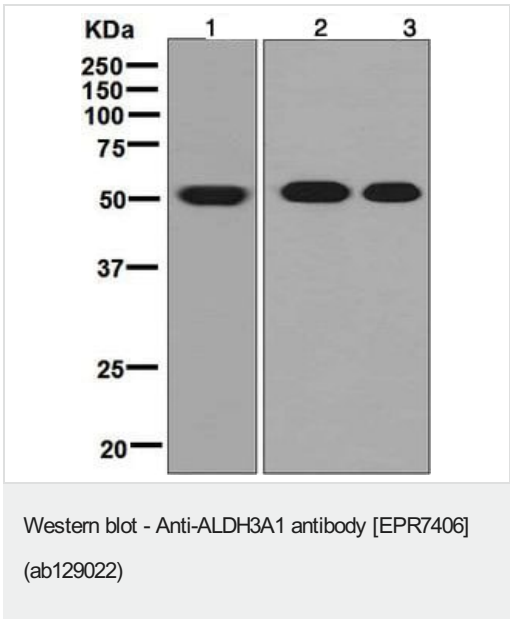
アプリケーション	Abreviews	特記事項
WB		1/1000 - 1/10000. Detects a band of approximately 50 kDa (predicted molecular weight: 50 kDa).

追加情報 Is unsuitable for Flow Cyt,ICC/IF ,IHC-P or IP.

ターゲット情報

機能	ALDHs play a major role in the detoxification of alcohol-derived acetaldehyde. They are involved in the metabolism of corticosteroids, biogenic amines, neurotransmitters, and lipid peroxidation. This protein preferentially oxidizes aromatic aldehyde substrates. It may play a role in the oxidation of toxic aldehydes.
組織特異性	High levels in stomach, esophagus and lung; low level in the liver and kidney.
配列類似性	Belongs to the aldehyde dehydrogenase family.
細胞内局在	Cytoplasm.

画像



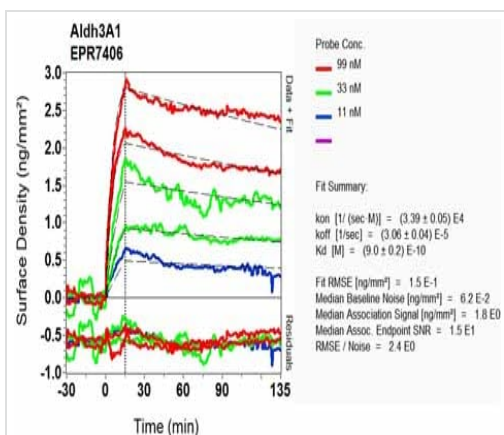
All lanes : Anti-ALDH3A1 antibody [EPR7406] (ab129022) at 1/1000 dilution

Lane 1 : A549 cell lysates
Lane 2 : Mouse eyeball lysates
Lane 3 : Rat eyeball lysates

Lysates/proteins at 10 µg per lane.

Secondary
All lanes : HRP-conjugated goat anti-abbit at 1/2000 dilution

Predicted band size: 50 kDa
Observed band size: 50 kDa



SPR Scanning - Anti-ALDH3A1 antibody
[EPR7406] (ab129022)

Equilibrium dissociation constant (K_D)

Learn more about K_D

[Click here to learn more about \$K_D\$](#)

Why choose a recombinant antibody?



Research with confidence
Consistent and reproducible results



Long-term and scalable supply
Recombinant technology



Success from the first experiment
Confirmed specificity



Ethical standards compliant
Animal-free production

Anti-ALDH3A1 antibody [EPR7406] (ab129022)

Please note: All products are "FOR RESEARCH USE ONLY. NOT FOR USE IN DIAGNOSTIC PROCEDURES"

Our Abpromise to you: Quality guaranteed and expert technical support

- Replacement or refund for products not performing as stated on the datasheet
- Valid for 12 months from date of delivery
- Response to your inquiry within 24 hours
- We provide support in Chinese, English, French, German, Japanese and Spanish
- Extensive multi-media technical resources to help you
- We investigate all quality concerns to ensure our products perform to the highest standards

If the product does not perform as described on this datasheet, we will offer a refund or replacement. For full details of the Abpromise, please visit <https://www.abcam.co.jp/abpromise> or contact our technical team.

Terms and conditions

- Guarantee only valid for products bought direct from Abcam or one of our authorized distributors