



Anti-ALDH3A1 antibody ab103895

1 References [画像数 1](#)

製品の概要

製品名	Anti-ALDH3A1 antibody
製品の詳細	Goat polyclonal to ALDH3A1
由来種	Goat
アプリケーション	適用あり: IHC-P, WB
種交差性	交差種: Mouse, Human
免疫原	Synthetic peptide: RYPSPAKMTQH by a Cysteine residue linker, corresponding to C terminal amino acids 442-453 of Human ALDH3A1 (NP_000682.3)
	 Run BLAST with  Run BLAST with
ポジティブ・コントロール	Mouse Eye Lysate
特記事項	<p>The Life Science industry has been in the grips of a reproducibility crisis for a number of years. Abcam is leading the way in addressing this with our range of recombinant monoclonal antibodies and knockout edited cell lines for gold-standard validation. Please check that this product meets your needs before purchasing.</p> <p>If you have any questions, special requirements or concerns, please send us an inquiry and/or contact our Support team ahead of purchase. Recommended alternatives for this product can be found below, along with publications, customer reviews and Q&As</p>

製品の特性

製品の状態	Liquid
保存方法	Shipped at 4°C. Upon delivery aliquot and store at -20°C. Avoid freeze / thaw cycles.
バッファー	pH: 7.30 Preservative: 0.02% Sodium azide Constituents: 0.5% BSA, Tris buffered saline
精製度	Immunogen affinity purified
特記事項 (精製)	Purified from goat serum by ammonium sulphate precipitation followed by antigen affinity chromatography using the immunizing peptide.
ポリ/モノ	ポリクローナル

アプリケーション

The Abpromise guarantee

Abpromise保証は、次のテスト済みアプリケーションにおけるab103895の使用に適用されます

アプリケーションノートには、推奨の開始希釈率がありますが、適切な希釈率につきましてはご検討ください。

アプリケーション	Abreviews	特記事項
IHC-P		Use a concentration of 3 - 5 µg/ml. Perform heat mediated antigen retrieval with citrate buffer pH 6 before commencing with IHC staining protocol.
WB		Use a concentration of 0.01 - 0.03 µg/ml. Predicted molecular weight: 50 kDa. 1 hour primary incubation is recommended for this product.

ターゲット情報

機能

ALDHs play a major role in the detoxification of alcohol-derived acetaldehyde. They are involved in the metabolism of corticosteroids, biogenic amines, neurotransmitters, and lipid peroxidation. This protein preferentially oxidizes aromatic aldehyde substrates. It may play a role in the oxidation of toxic aldehydes.

組織特異性

High levels in stomach, esophagus and lung; low level in the liver and kidney.

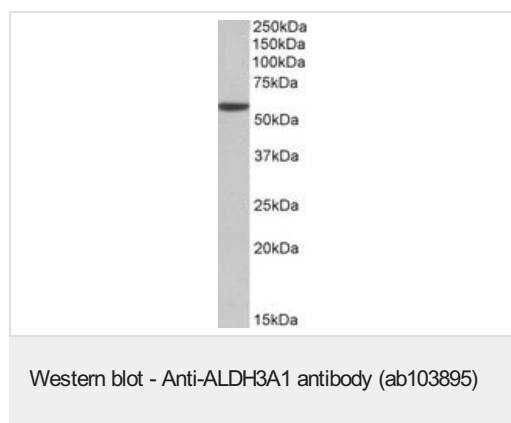
配列類似性

Belongs to the aldehyde dehydrogenase family.

細胞内局在

Cytoplasm.

画像



Anti-ALDH3A1 antibody (ab103895) at 0.01 µg/ml + Mouse Eye
Lysate in RIPA buffer at 35 µg

Developed using the ECL technique.

Predicted band size: 50 kDa

Please note: All products are "FOR RESEARCH USE ONLY. NOT FOR USE IN DIAGNOSTIC PROCEDURES"

Our Abpromise to you: Quality guaranteed and expert technical support

- Replacement or refund for products not performing as stated on the datasheet
- Valid for 12 months from date of delivery
- Response to your inquiry within 24 hours
- We provide support in Chinese, English, French, German, Japanese and Spanish
- Extensive multi-media technical resources to help you
- We investigate all quality concerns to ensure our products perform to the highest standards

If the product does not perform as described on this datasheet, we will offer a refund or replacement. For full details of the Abpromise, please visit <https://www.abcam.co.jp/abpromise> or contact our technical team.

Terms and conditions

- Guarantee only valid for products bought direct from Abcam or one of our authorized distributors