


# Anti-ALDH1L1 antibody ab235197

★★★★★ **2 Abreviews** [画像数 7](#)

### 製品の概要

製品名	Anti-ALDH1L1 antibody
製品の詳細	Goat polyclonal to ALDH1L1
由来種	Goat
アプリケーション	<b>適用あり:</b> WB, ICC/IF, IHC-P
種交差性	<b>交差種:</b> Mouse, Human <b>交差が予測される動物種:</b> Rat, Orangutan 
免疫原	Synthetic peptide. This information is proprietary to Abcam and/or its suppliers.
ポジティブ・コントロール	WB: Recombinant mouse ALDH1L1 protein; Mouse liver tissue lysate. ICC/IF: NIH/3T3 cells. IHC-P: Mouse kidney and liver tissue.
特記事項	<p>The Life Science industry has been in the grips of a reproducibility crisis for a number of years. Abcam is leading the way in addressing this with our range of recombinant monoclonal antibodies and knockout edited cell lines for gold-standard validation. Please check that this product meets your needs before purchasing.</p> <p>If you have any questions, special requirements or concerns, please send us an inquiry and/or contact our Support team ahead of purchase. Recommended alternatives for this product can be found below, along with publications, customer reviews and Q&amp;As</p>

### 製品の特性

製品の状態	Liquid
保存方法	Shipped at 4°C. Store at +4°C short term (1-2 weeks). Upon delivery aliquot. Store at -20°C. Avoid freeze / thaw cycle.
バッファー	Preservative: 0.01% Sodium azide Constituent: PBS
精製度	Affinity purified
ポリ/モノ	ポリクローナル
アイソタイプ	IgG

### アプリケーション

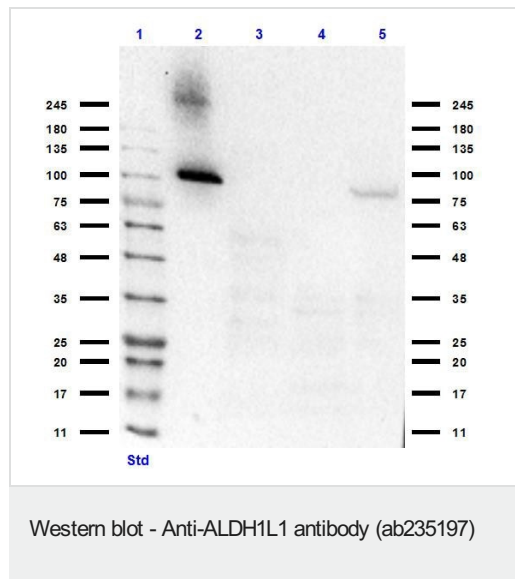
**The Abpromise guarantee**      Abpromise保証は、 次のテスト済みアプリケーションにおけるab235197の使用に適用されます  
 アプリケーションノートには、推奨の開始希釈率がありますが、適切な希釈率につきましてはご検討ください。

アプリケーション	Abreviews	特記事項
WB		1/1000. Predicted molecular weight: 99 kDa.
ICC/IF		Use a concentration of 15 µg/ml.
IHC-P		1/200. HIER using Citrate Buffer for 20 minutes.

## ターゲット情報

組織特異性	Highly expressed in liver, pancreas and kidney.
配列類似性	In the N-terminal section; belongs to the GART family. In the C-terminal section; belongs to the aldehyde dehydrogenase family. ALDH1L subfamily. Contains 1 acyl carrier domain.
細胞内局在	Cytoplasm.

## 画像



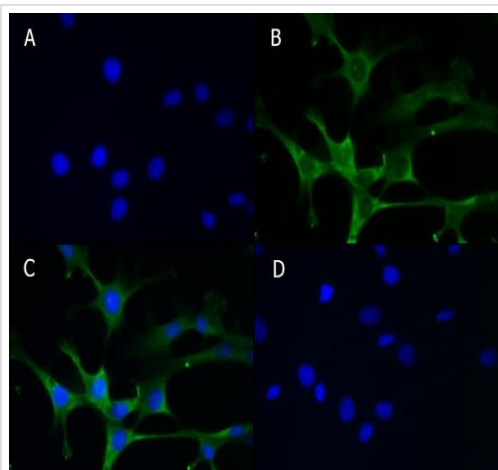
**All lanes :** Anti-ALDH1L1 antibody (ab235197) at 1/1000 dilution

- Lane 1 :** Opal pre-stained ladder
- Lane 2 :** Recombinant mouse ALDH1L1 protein
- Lane 3 :** HEK-293T (human epithelial cell line from embryonic kidney transformed with large T antigen) cell lysate
- Lane 4 :** NIH/3T3 (mouse embryo fibroblast cell line) cell lysate
- Lane 5 :** Mouse liver (normal tissue) lysate

**Secondary**  
**Lanes 1-4 :** F(ab)'2 Dk-a-Gt IgG [H&L] at 1/40000 dilution  
**Lane 5 :** Goat polyclonal to ALDH1L1 (ab235197) at 1/40000 dilution (F(ab)'2 Dk-a-Gt IgG [H&L])

**Predicted band size:** 99 kDa  
**Observed band size:** 98.7 kDa

**Exposure time:** 30 seconds



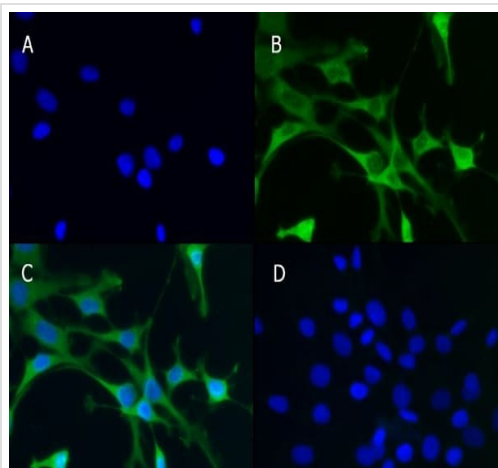
Immunocytochemistry/ Immunofluorescence - Anti-ALDH1L1 antibody (ab235197)

4% paraformaldehyde-fixed, 0.3% Triton X-100 permeabilized NIH/3T3 (mouse embryo fibroblast cell line) cells stained for ALDH1L1 (Green) using ab235197 at 15 µg/mL over night at 4°C in ICC/IF. The nuclear counterstain is DAPI (Blue).

Donkey Anti-Goat IgG DyLight™ 488 Conjugated Preadsorbed was used as the secondary antibody at 5 µg/mL for 1 hour at room temperature.

- A)** DAPI
- B)** ab235197 + secondary.
- C)** Merged image
- D)** Secondary only control.

Expected localization: Cytoplasm.



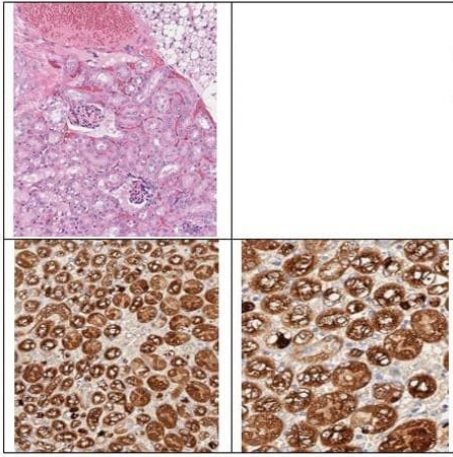
Immunocytochemistry/ Immunofluorescence - Anti-ALDH1L1 antibody (ab235197)

100% methanol-fixed, 0.3% Triton X-100 permeabilized NIH/3T3 (mouse embryo fibroblast cell line) cells stained for ALDH1L1 (Green) using ab235197 at 15 µg/mL over night at 4°C in ICC/IF. The nuclear counterstain is DAPI (Blue).

Donkey Anti-Goat IgG DyLight™ 488 Conjugated Preadsorbed was used as the secondary antibody at 5 µg/mL for 1 hour at room temperature.

- A)** DAPI
- B)** ab235197 + secondary.
- C)** Merged image
- D)** Secondary only control.

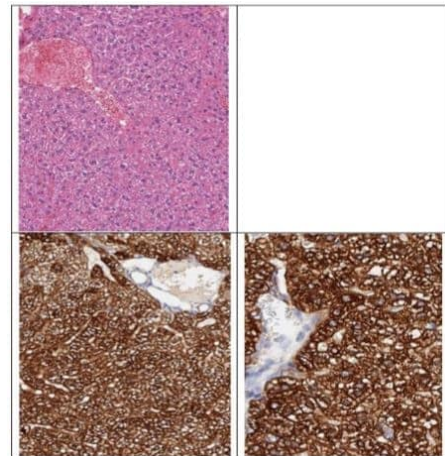
Expected localization: Cytoplasm.



Immunohistochemistry (Formalin/PFA-fixed paraffin-embedded sections) - Anti-ALDH1L1 antibody (ab235197)

Immunohistochemical analysis of mouse kidney tissue labeling ALDH1L1 with ab235197 at 1/200 dilution, followed by a Donkey Anti-Goat IgG (HRP) secondary antibody for 20 minutes at room temperature. Images are shown at 20x (lower left) and 40x (lower right) magnification. Counter stained with Hematoxylin. Upper left panel, H&E staining.

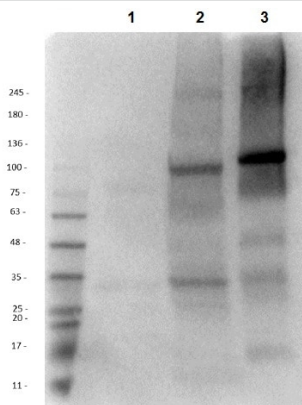
Pathologist analysis: ALDH1L1 showed selective staining of renal tubular epithelial cells in mouse kidney. The specificity of the staining is cytoplasmic and membranous in tubules not in glomeruli which is consistent with ALDH1L1 staining in the Human Protein Atlas and as such, is suitable for IHC at a concentration of 1:200.



Immunohistochemistry (Formalin/PFA-fixed paraffin-embedded sections) - Anti-ALDH1L1 antibody (ab235197)

Immunohistochemical analysis of mouse liver tissue labeling ALDH1L1 with ab235197 at 1/200 dilution, followed by a Donkey Anti-Goat IgG (HRP) secondary antibody for 20 minutes at room temperature. Images are shown at 20x (lower left) and 40x (lower right) magnification. Counter stained with Hematoxylin. Upper left panel, H&E staining.

Pathologist analysis: ALDH1L1 showed selective cytoplasmic staining in mouse liver of hepatocytes. The specificity of the staining is weak in bile duct cells and strong membranous and cytoplasmic in hepatocytes which is consistent with ALDH1L1 staining in the Human Protein Atlas and as such, is suitable for IHC at a concentration of 1:200.



Western blot - Anti-ALDH1L1 antibody (ab235197)

**All lanes :** Anti-ALDH1L1 antibody (ab235197) at 1/1000 dilution

**Lane 1 :** NIH/3T3 (mouse embryo fibroblast cell line) whole cell lysate

**Lane 2 :** Mouse liver lysate

**Lane 3 :** ALDH1L1 HEK293T overexpressed lysate

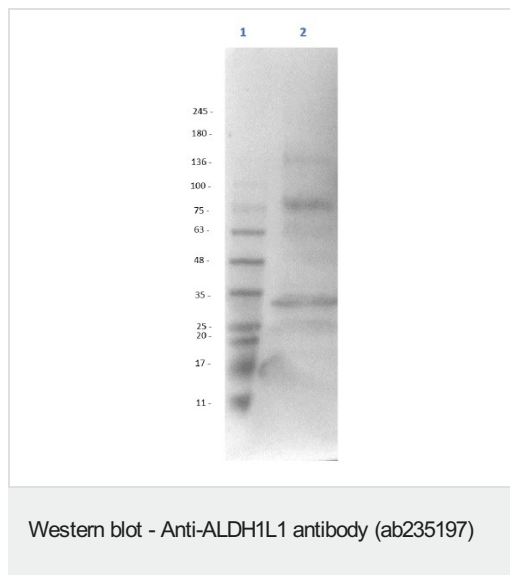
#### Secondary

**All lanes :** 605-703-125 GOAT IgG (H&L) Antibody Peroxidase Conjugated Pre-adsorbed at 1/40000 dilution

**Predicted band size:** 99 kDa

**Exposure time:** 1 second

ALDH1L1 detection in NIH-3T3 by WB weak under general lysate conditions. Optimal detection of protein in 3T3 cells at G2/M enriched cells (not tested).



Anti-ALDH1L1 antibody (ab235197) at 1/1000 dilution + NIH/3T3 (mouse embryo fibroblast cell line) whole cell lysate

#### **Secondary**

Goat polyclonal to ALDH1L1 (ab235197) at 1/40000 dilution (605-703-125 GOAT IgG (H&L) Antibody Peroxidase Conjugated Pre-adsorbed)

**Predicted band size:** 99 kDa

**Observed band size:** 80, 34 kDa

**Exposure time:** 35 seconds

ALDH1L1 detection in NIH-3T3 by WB weak under general lysate conditions. Optimal detection of protein in 3T3 cells at G2/M enriched cells (not tested).

**Please note:** All products are "FOR RESEARCH USE ONLY. NOT FOR USE IN DIAGNOSTIC PROCEDURES"

#### **Our Abpromise to you: Quality guaranteed and expert technical support**

- Replacement or refund for products not performing as stated on the datasheet
- Valid for 12 months from date of delivery
- Response to your inquiry within 24 hours
- We provide support in Chinese, English, French, German, Japanese and Spanish
- Extensive multi-media technical resources to help you
- We investigate all quality concerns to ensure our products perform to the highest standards

If the product does not perform as described on this datasheet, we will offer a refund or replacement. For full details of the Abpromise, please visit <https://www.abcam.co.jp/abpromise> or contact our technical team.

#### **Terms and conditions**

- Guarantee only valid for products bought direct from Abcam or one of our authorized distributors