

### Anti-ALDH1L1 antibody [3E9] ab56777

★☆☆☆☆ [1 Abreviews](#) [24 References](#) [画像数 5](#)

#### 製品の概要

製品名	Anti-ALDH1L1 antibody [3E9]
製品の詳細	Mouse monoclonal [3E9] to ALDH1L1
由来種	Mouse
アプリケーション	<b>適用あり:</b> WB, IHC-P, IP, ICC/IF, Flow Cyt
種交差性	<b>交差種:</b> Mouse, Human <b>交差が予測される動物種:</b> Rabbit 
免疫原	Recombinant fragment: EESFGPVMII SRFADGDLDA VLSTRANATEF GLASGVFTRD INKALYVSDK LQAGTVFVNT YNKTDVAAPF GGFKQSGFGK DLGEAALNEY LRVKTVTFEY, corresponding to amino acids 803-903 of Human ALDH1L1 <a href="#">Run BLAST with ExPASy</a> <a href="#">Run BLAST with NCBI</a>
特記事項	<p>This product was changed from ascites to tissue culture supernatant on 22 May 2019. Please note that the dilutions may need to be adjusted accordingly. If you have any questions, please do not hesitate to contact our scientific support team.</p> <p>The Life Science industry has been in the grips of a reproducibility crisis for a number of years. Abcam is leading the way in addressing this with our range of recombinant monoclonal antibodies and knockout edited cell lines for gold-standard validation. Please check that this product meets your needs before purchasing.</p> <p>If you have any questions, special requirements or concerns, please send us an inquiry and/or contact our Support team ahead of purchase. Recommended alternatives for this product can be found below, along with publications, customer reviews and Q&amp;As</p>

#### 製品の特性

製品の状態	Liquid
保存方法	Shipped at 4°C. Upon delivery aliquot and store at -20°C or -80°C. Avoid repeated freeze / thaw cycles.
バッファー	pH: 7.4
精製度	Tissue culture supernatant
特記事項(精製)	Purified from TCS.
ポリ/モノ	モノクローナル

クローン名	3E9
アイソタイプ	IgG3
軽鎖の種類	kappa

#### アプリケーション

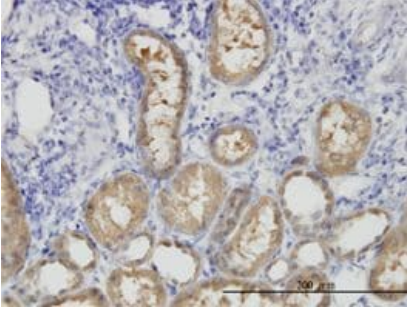
The Abpromise guarantee **Abpromise保証は、次のテスト済みアプリケーションにおけるab56777の使用に適用されず**  
 アプリケーションノートには、推奨の開始希釈率がありますが、適切な希釈率につきましてはご検討ください。

アプリケーション	Abreviews	特記事項
WB		Use at an assay dependent concentration. Predicted molecular weight: 99 kDa.
IHC-P		Use at an assay dependent concentration.
IP		Use at an assay dependent concentration.
ICC/IF	★☆☆☆☆ (1)	Use at an assay dependent concentration.
Flow Cyt		Use at an assay dependent concentration. <b>ab18392</b> - Mouse monoclonal IgG3, is suitable for use as an isotype control with this antibody.

#### ターゲット情報

組織特異性	Highly expressed in liver, pancreas and kidney.
配列類似性	In the N-terminal section; belongs to the GART family. In the C-terminal section; belongs to the aldehyde dehydrogenase family. ALDH1L subfamily. Contains 1 acyl carrier domain.
細胞内局在	Cytoplasm.

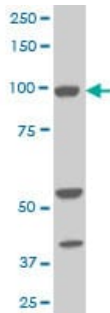
#### 画像



Immunohistochemistry (Formalin/PFA-fixed paraffin-embedded sections) - Anti-ALDH1L1 antibody [3E9] (ab56777)

ALDH1L1 antibody (ab56777) used in immunohistochemistry at 3ug/ml on formalin fixed and paraffin embedded human kidney.

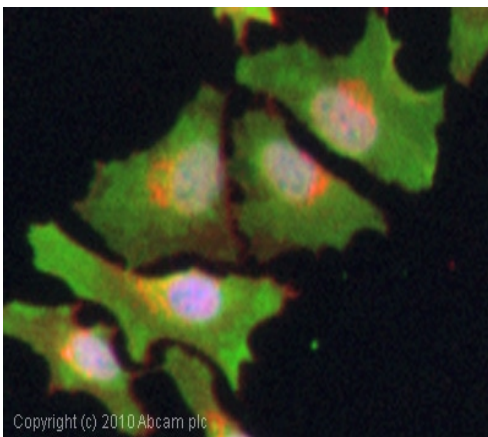
This image was generated using the ascites version of the product.



Western blot - Anti-ALDH1L1 antibody [3E9] (ab56777)

ALDH1L1 antibody (ab56777) at 1ug/lane + NIH/3T3 cell lysate at 25 µg/lane.

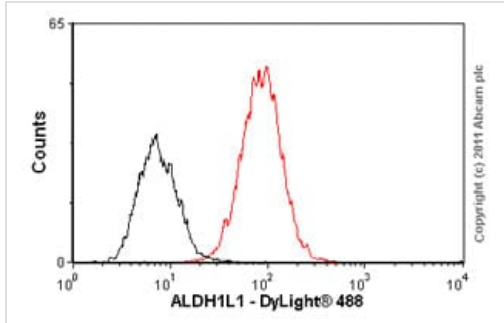
This image was generated using the ascites version of the product.



Immunocytochemistry/ Immunofluorescence - Anti-ALDH1L1 antibody [3E9] (ab56777)

ICC/IF image of ab56777 stained HeLa cells. The cells were 4% formaldehyde fixed (10 min) and then incubated in 1%BSA / 10% normal goat serum / 0.3M glycine in 0.1% PBS-Tween for 1h to permeabilise the cells and block non-specific protein-protein interactions. The cells were then incubated with the antibody (ab56777, 1µg/ml) overnight at +4°C. The secondary antibody (green) was Alexa Fluor® 488 goat anti-mouse IgG (H+L) used at a 1/1000 dilution for 1h. Alexa Fluor® 594 WGA was used to label plasma membranes (red) at a 1/200 dilution for 1h. DAPI was used to stain the cell nuclei (blue) at a concentration of 1.43µM.

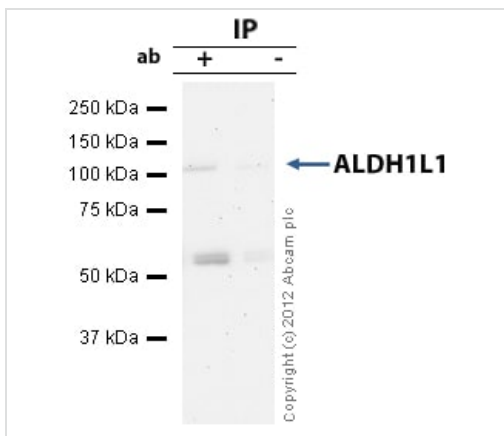
This image was generated using the ascites version of the product.



Flow Cytometry - Anti-ALDH1L1 antibody [3E9] (ab56777)

Overlay histogram showing HepG2 cells stained with ab56777 (red line). The cells were fixed with 80% methanol (5 min) and then permeabilized with 0.1% PBS-Tween for 20 min. The cells were then incubated in 1x PBS / 10% normal goat serum / 0.3M glycine to block non-specific protein-protein interactions followed by the antibody (ab56777, 0.5µg/1x10<sup>6</sup> cells) for 30 min at 22°C. The secondary antibody used was DyLight® 488 goat anti-mouse IgG (H+L) ([ab96879](#)) at 1/500 dilution for 30 min at 22°C. Isotype control antibody (black line) was Mouse IgG3 [MG3-35] ([ab18394](#), 1µg/1x10<sup>6</sup> cells) used under the same conditions. Acquisition of >5,000 events was performed. This antibody gave a positive signal in HepG2 cells fixed with 4% paraformaldehyde (10 min)/permeabilized in 0.1% PBS-Tween used under the same conditions.

This image was generated using the ascites version of the product.



Immunoprecipitation - Anti-ALDH1L1 antibody [3E9] (ab56777)

ALDH1L1 was immunoprecipitated using 0.5mg Mouse Liver whole tissue extract, 5µg of Mouse monoclonal to ALDH1L1 and 50µl of protein G magnetic beads (+). No antibody was added to the control (-).

The antibody was incubated under agitation with Protein G beads for 10min, Mouse Liver whole tissue extract lysate diluted in RIPA buffer was added to each sample and incubated for a further 10min under agitation.

Proteins were eluted by addition of 40µl SDS loading buffer and incubated for 10min at 70°C; 10µl of each sample was separated on a SDS PAGE gel, transferred to a nitrocellulose membrane, blocked with 5% BSA and probed with ab56777.

Secondary: Goat polyclonal to mouse IgG light chain specific (HRP) at 1/5000 dilution.

Band: 99kDa: ALDH1L1; non specific - 60kDa: We are unsure as to the identity of this extra band.

This image was generated using the ascites version of the product.

## **Our Abpromise to you: Quality guaranteed and expert technical support**

---

- Replacement or refund for products not performing as stated on the datasheet
- Valid for 12 months from date of delivery
- Response to your inquiry within 24 hours
  
- We provide support in Chinese, English, French, German, Japanese and Spanish
- Extensive multi-media technical resources to help you
- We investigate all quality concerns to ensure our products perform to the highest standards

If the product does not perform as described on this datasheet, we will offer a refund or replacement. For full details of the Abpromise, please visit <https://www.abcam.co.jp/abpromise> or contact our technical team.

## **Terms and conditions**

---

- Guarantee only valid for products bought direct from Abcam or one of our authorized distributors