

Anti-ALDH1L1 + ALDH1L2 antibody [EPR12743(B)] - BSA and Azide free ab233016

リコンビナント **RabMAb**

画像数 6

製品の概要

製品名	Anti-ALDH1L1 + ALDH1L2 antibody [EPR12743(B)] - BSA and Azide free
製品の詳細	Rabbit monoclonal [EPR12743(B)] to ALDH1L1+ALDH1L2 - BSA and Azide free
由来種	Rabbit
アプリケーション	適用あり: WB, IHC-P, IHC-Fr 適用なし: Flow Cyt or ICC/IF
種交差性	交差種: Mouse, Rat, Human
免疫原	Synthetic peptide. This information is proprietary to Abcam and/or its suppliers.
ポジティブ・コントロール	IHC-P: Human kidney tissue. IHC-Fr: Mouse and rat liver tissue.
特記事項	<p>ab233016 is the carrier-free version of ab177463.</p> <p>Our carrier-free antibodies are typically supplied in a PBS-only formulation, purified and free of BSA, sodium azide and glycerol. The carrier-free buffer and high concentration allow for increased conjugation efficiency.</p> <p>This conjugation-ready format is designed for use with fluorochromes, metal isotopes, oligonucleotides, and enzymes, which makes them ideal for antibody labelling, functional and cell-based assays, flow-based assays (e.g. mass cytometry) and Multiplex Imaging applications.</p> <p>Use our conjugation kits for antibody conjugates that are ready-to-use in as little as 20 minutes with <1 minute hands-on-time and 100% antibody recovery: available for fluorescent dyes, HRP, biotin and gold.</p> <p>This product is compatible with the Maxpar[®] Antibody Labeling Kit from Fluidigm, without the need for antibody preparation. Maxpar[®] is a trademark of Fluidigm Canada Inc.</p> <p>This product is a recombinant monoclonal antibody, which offers several advantages including:</p> <ul style="list-style-type: none"> - High batch-to-batch consistency and reproducibility - Improved sensitivity and specificity - Long-term security of supply - Animal-free production <p>For more information see here.</p> <p>Our RabMAb[®] technology is a patented hybridoma-based technology for making rabbit monoclonal antibodies. For details on our patents, please refer to RabMAb[®] patents.</p>

製品の特性

製品の状態	Liquid
保存方法	Shipped at 4°C. Store at +4°C. Do Not Freeze.
バッファー	pH: 7.2 Constituent: PBS
キャリア・フリー	はい
精製度	Protein A purified
ポリ/モノ	モノクローナル
クローン名	EPR12743(B)
アイソタイプ	IgG

アプリケーション

The Abpromise guarantee **Abpromise保証は、** 次のテスト済みアプリケーションにおけるab233016の使用に適用されます
アプリケーションノートには、推奨の開始希釈率がありますが、適切な希釈率につきましてはご検討ください。

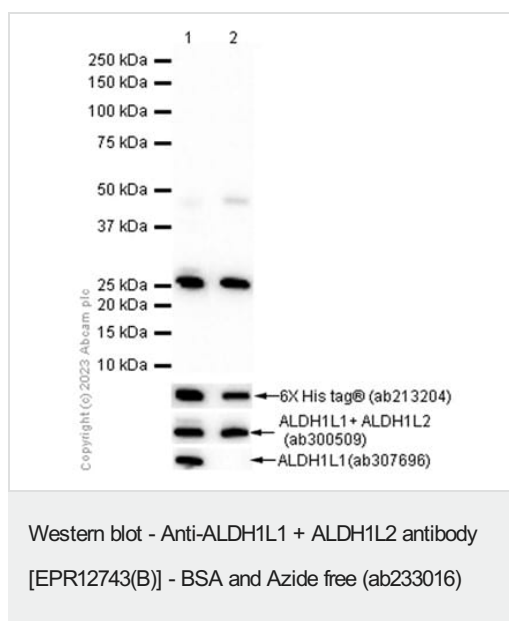
アプリケーション	Abreviews	特記事項
WB		Use at an assay dependent concentration. Predicted molecular weight: 99 kDa.
IHC-P		Use at an assay dependent concentration. Perform heat mediated antigen retrieval with citrate buffer pH 6 before commencing with IHC staining protocol.
IHC-Fr		Use at an assay dependent concentration.

追加情報 Is unsuitable for Flow Cyt or ICC/IF.

ターゲット情報

細胞内局在 ALDH1L1: Cytoplasm.

画像



All lanes : Anti-ALDH1L1 + ALDH1L2 antibody [EPR12743(B)] - Astrocyte Marker ([ab177463](#)) at 1/1000 dilution

Lane 1 : His-tagged mouse ALDH1L1 fragment recombinant protein (aa162-366)

Lane 2 : His-tagged mouse ALDH1L2 fragment recombinant protein (aa184-387)

Lysates/proteins at 0.01 µg per lane.

Secondary

All lanes : Goat Anti-Rabbit IgG H&L (HRP) ([ab97051](#)) at 1/20000 dilution

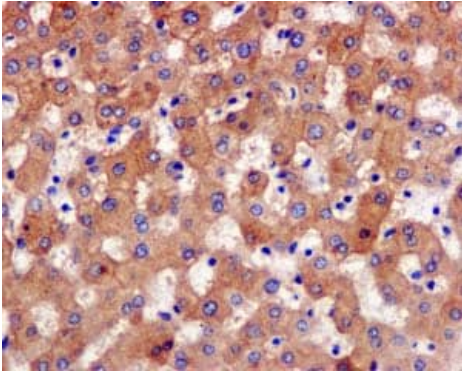
Predicted band size: 99 kDa

Observed band size: 37 kDa

Exposure time: 20 seconds

Blocking/Diluting buffer and concentration: 5% NFDM/TBST.

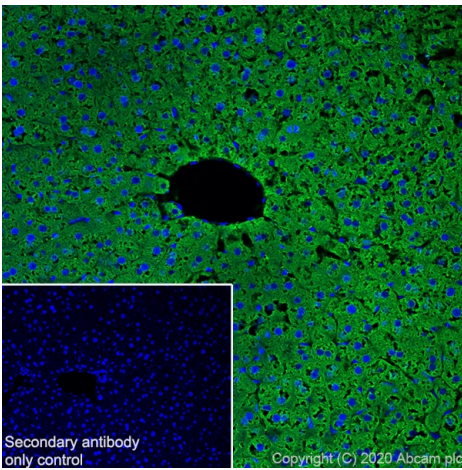
This data was developed using the same antibody clone in a different buffer formulation containing PBS, BSA, glycerol, and sodium azide ([ab177463](#)).



Immunohistochemistry (Formalin/PFA-fixed paraffin-embedded sections) - Anti-ALDH1L1+ALDH1L2 antibody [EPR12743(B)] - BSA and Azide free (ab233016)

Immunohistochemical analysis of paraffin-embedded Human liver tissue labeling ALDH1L1+ALDH1L2 with [ab177463](#) at 1/50 dilution. Antigen retrieval was heat mediated with citrate buffer pH 6 before commencing with IHC staining protocol.

This data was developed using the same antibody clone in a different buffer formulation containing PBS, BSA, glycerol, and sodium azide ([ab177463](#)).

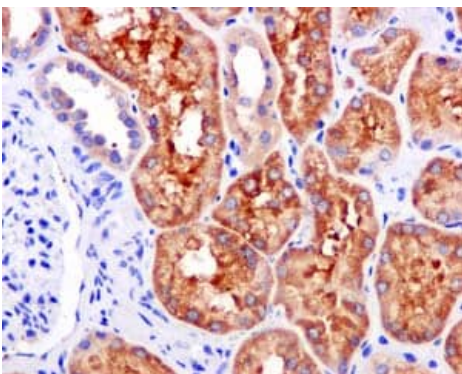


Immunohistochemistry (Frozen sections) - Anti-ALDH1L1+ALDH1L2 antibody [EPR12743(B)] - BSA and Azide free (ab233016)

Immunohistochemistry (Frozen sections) analysis of mouse liver tissue labeling ALDH1L1+ALDH1L2 with [ab177463](#) at 1/100 dilution. Tissue was fixed with 4% PFA and permeabilised with 0.2% Triton X-100. [ab150077](#), Goat Anti-Rabbit IgG H&L (Alexa Fluor® 488) at 1/1000 dilution was used as the secondary antibody. DAPI (blue) was used as nucleare counterstain. Antigen retrieval was heat mediated using sodium citrate buffer (10mM citrate pH 6.0 + 0.05% Tween-20).

Cytoplasmic staining on mouse liver.

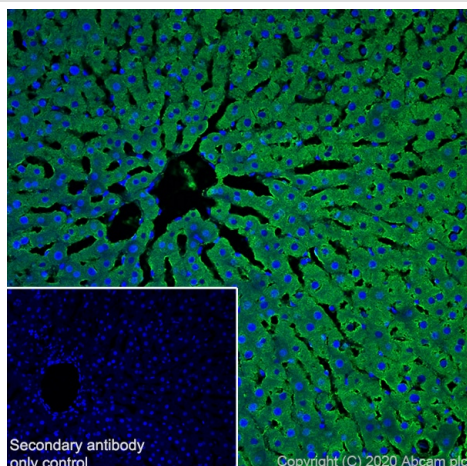
This data was developed using the same antibody clone in a different buffer formulation containing PBS, BSA, glycerol, and sodium azide ([ab177463](#)).



Immunohistochemistry (Formalin/PFA-fixed paraffin-embedded sections) - Anti-ALDH1L1+ALDH1L2 antibody [EPR12743(B)] - BSA and Azide free (ab233016)

Immunohistochemical analysis of paraffin-embedded Human kidney tissue labeling ALDH1L1+ALDH1L2 with [ab177463](#) at 1/50 dilution. Antigen retrieval was heat mediated with citrate buffer pH 6 before commencing with IHC staining protocol.

This data was developed using the same antibody clone in a different buffer formulation containing PBS, BSA, glycerol, and sodium azide ([ab177463](#)).



Immunohistochemistry (Frozen sections) - Anti-ALDH1L1+ALDH1L2 antibody [EPR12743(B)] - BSA and Azide free (ab233016)

Immunohistochemistry (Frozen sections) analysis of rat liver tissue labeling ALDH1L1+ALDH1L2 with **ab177463** at 1/100 dilution. Tissue was fixed with 4% PFA and permeabilised with 0.2% Triton X-100. **ab150077**, Goat Anti-Rabbit IgG H&L (Alexa Fluor® 488) at 1/1000 dilution was used as the secondary antibody. DAPI (blue) was used as nucleare counterstain. Antigen retrieval was heat mediated using sodium citrate buffer (10mM citrate pH 6.0 + 0.05% Tween-20).

Cytoplasmic staining on rat liver.

This data was developed using the same antibody clone in a different buffer formulation containing PBS, BSA, glycerol, and sodium azide (**ab177463**).

Why choose a recombinant antibody?



Research with confidence
Consistent and reproducible results



Long-term and scalable supply
Recombinant technology



Success from the first experiment
Confirmed specificity



Ethical standards compliant
Animal-free production

Anti-ALDH1L1+ALDH1L2 antibody [EPR12743(B)] - BSA and Azide free (ab233016)

Please note: All products are "FOR RESEARCH USE ONLY. NOT FOR USE IN DIAGNOSTIC PROCEDURES"

Our Abpromise to you: Quality guaranteed and expert technical support

- Replacement or refund for products not performing as stated on the datasheet
- Valid for 12 months from date of delivery
- Response to your inquiry within 24 hours
- We provide support in Chinese, English, French, German, Japanese and Spanish
- Extensive multi-media technical resources to help you
- We investigate all quality concerns to ensure our products perform to the highest standards

If the product does not perform as described on this datasheet, we will offer a refund or replacement. For full details of the Abpromise,

please visit <https://www.abcam.co.jp/abpromise> or contact our technical team.

Terms and conditions

- Guarantee only valid for products bought direct from Abcam or one of our authorized distributors