

### Anti-ALDH1A2 antibody [EPR9370] ab156019

リコンビナント **RabMAb**

★★★★★ [1 Abreviews](#) [3 References](#) [画像数 2](#)

#### 製品の概要

製品名	Anti-ALDH1A2 antibody [EPR9370]
製品の詳細	Rabbit monoclonal [EPR9370] to ALDH1A2
由来種	Rabbit
アプリケーション	<b>適用あり:</b> WB
種交差性	<b>交差種:</b> Mouse, Rat, Human
免疫原	Synthetic peptide. This information is proprietary to Abcam and/or its suppliers.
ポジティブ・コントロール	WB: K-562 cell lysate, Mouse and rat testis tissue lysate.
特記事項	<p>This product is a recombinant monoclonal antibody, which offers several advantages including:</p> <ul style="list-style-type: none"> <li>- High batch-to-batch consistency and reproducibility</li> <li>- Improved sensitivity and specificity</li> <li>- Long-term security of supply</li> <li>- Animal-free production</li> </ul> <p>For more information <a href="#">see here</a>.</p> <p>Our RabMAb<sup>®</sup> technology is a patented hybridoma-based technology for making rabbit monoclonal antibodies. For details on our patents, please refer to <a href="#">RabMAb<sup>®</sup> patents</a>.</p>

#### 製品の特性

製品の状態	Liquid
保存方法	Shipped at 4°C. Store at +4°C short term (1-2 weeks). Upon delivery aliquot. Store at -20°C long term. Avoid freeze / thaw cycle.
バッファー	<p>pH: 7.20</p> <p>Preservative: 0.01% Sodium azide</p> <p>Constituents: 59% PBS, 40% Glycerol (glycerin, glycerine), 0.05% BSA</p>
精製度	Protein A purified
ポリ/モノ	モノクローナル
クローン名	EPR9370
アイソタイプ	IgG

アプリケーション

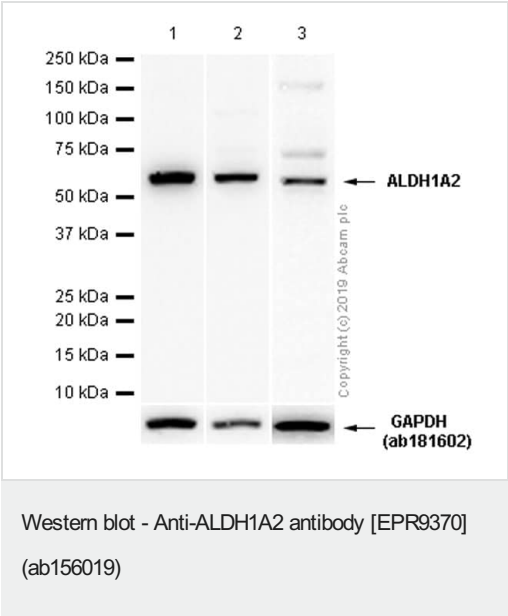
The Abpromise guarantee      Abpromise保証は、 次のテスト済みアプリケーションにおけるab156019の使用に適用されます  
アプリケーションノートには、推奨の開始希釈率がありますが、適切な希釈率につきましてはご検討ください。

アプリケーション	Abreviews	特記事項
WB	★★★★★ (1)	1/1000. Predicted molecular weight: 57 kDa.

ターゲット情報

機能	Recognizes as substrates free retinal and cellular retinol-binding protein-bound retinal. Does metabolize octanal and decanal but does not metabolize citral, benzaldehyde, acetaldehyde and propanal efficiently.
パスウェイ	Cofactor metabolism; retinol metabolism.
配列類似性	Belongs to the aldehyde dehydrogenase family.
細胞内局在	Cytoplasm.

画像



**All lanes :** Anti-ALDH1A2 antibody [EPR9370] (ab156019) at 1/1000 dilution (Purified)

- Lane 1 :** K-562 (Human chronic myelogenous leukemia lymphoblast) whole cell lysates
- Lane 2 :** Mouse testis lysates
- Lane 3 :** Rat testis lysates

Lysates/proteins at 20 µg per lane.

**Secondary**  
**All lanes :** Goat Anti-Rabbit IgG H&L (HRP) ([ab97051](#)) at 1/20000 dilution

**Predicted band size:** 57 kDa  
**Observed band size:** 57 kDa

Blocking/Diluting buffer: 5% NFDm/TBST

### Why choose a recombinant antibody?



**Research with confidence**  
Consistent and reproducible results



**Long-term and scalable supply**  
Recombinant technology



**Success from the first experiment**  
Confirmed specificity



**Ethical standards compliant**  
Animal-free production

Anti-ALDH1A2 antibody [EPR9370] (ab156019)

**Please note:** All products are "FOR RESEARCH USE ONLY. NOT FOR USE IN DIAGNOSTIC PROCEDURES"

### Our Abpromise to you: Quality guaranteed and expert technical support

---

- Replacement or refund for products not performing as stated on the datasheet
- Valid for 12 months from date of delivery
- Response to your inquiry within 24 hours
- We provide support in Chinese, English, French, German, Japanese and Spanish
- Extensive multi-media technical resources to help you
- We investigate all quality concerns to ensure our products perform to the highest standards

If the product does not perform as described on this datasheet, we will offer a refund or replacement. For full details of the Abpromise, please visit <https://www.abcam.co.jp/abpromise> or contact our technical team.

### Terms and conditions

---

- Guarantee only valid for products bought direct from Abcam or one of our authorized distributors