


Anti-ALDH1A1 antibody ab9883

★★★★☆ [4 Abreviews](#) [20 References](#) [画像数 2](#)

製品の概要

製品名	Anti-ALDH1A1 antibody
製品の詳細	Goat polyclonal to ALDH1A1
由来種	Goat
特異性	This antibody may cross-react with ALDH1A2 (GeneID 8854) with one residue difference from this design, and with ALDH2 (GeneID 217) with two residues difference from this design. Please note that ALDH1A2 is known to be alternatively spliced under some conditions (37kDa).
アプリケーション	適用あり: WB 適用なし: ICC
種交差性	交差種: Mouse, Rat, Human 交差が予測される動物種: Cow 
免疫原	Synthetic peptide: EVKTVTQKISQKNS, corresponding to C terminal amino acids 488-501 of Human Aldehyde Dehydrogenase 1. Run BLAST with ExPASy Run BLAST with NCBI
特記事項	

A protease inhibitor that inhibits fibrin clot formation.

The Life Science industry has been in the grips of a reproducibility crisis for a number of years. Abcam is leading the way in addressing this with our range of recombinant monoclonal antibodies and knockout edited cell lines for gold-standard validation. Please check that this product meets your needs before purchasing.

If you have any questions, special requirements or concerns, please send us an inquiry and/or contact our Support team ahead of purchase. Recommended alternatives for this product can be found below, along with publications, customer reviews and Q&As

製品の特性

製品の状態	Liquid
保存方法	Shipped at 4°C. Upon delivery aliquot and store at -20°C or -80°C. Avoid repeated freeze / thaw cycles.
バッファー	pH: 7.30 Preservative: 0.02% Sodium azide Constituents: 99% Tris buffered saline, 0.5% BSA

精製度	Immunogen affinity purified
特記事項(精製)	Purified from goat serum by ammonium sulphate precipitation followed by antigen affinity chromatography using the immunizing peptide.
一次抗体 備考	A protease inhibitor that inhibits fibrin clot formation.
ポリ/モノ	ポリクローナル
アイソタイプ	IgG

アプリケーション

The Abpromise guarantee **Abpromise保証は、次のテスト済みアプリケーションにおけるab9883の使用に適用されます**
 アプリケーションノートには、推奨の開始希釈率がありますが、適切な希釈率につきましてはご検討ください。

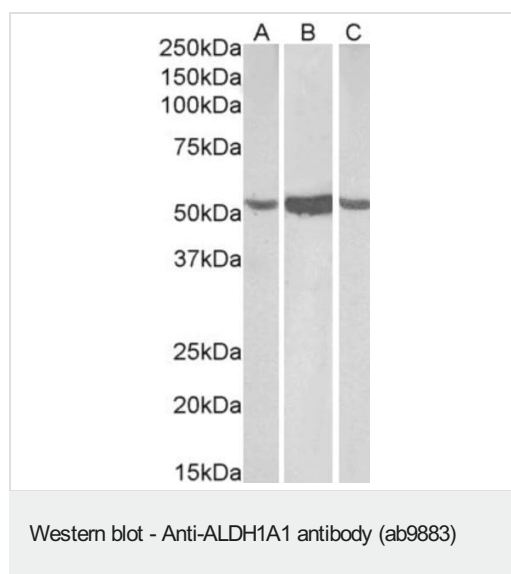
アプリケーション	Abreviews	特記事項
WB	★★★★★ (2)	Use a concentration of 0.3 - 1 µg/ml. Predicted molecular weight: 55 kDa. 1 hour primary incubation is recommended for this product.

追加情報 Is unsuitable for ICC.

ターゲット情報

機能	Binds free retinal and cellular retinol-binding protein-bound retinal. Can convert/oxidize retinaldehyde to retinoic acid.
パスウェイ	Cofactor metabolism; retinol metabolism.
配列類似性	Belongs to the aldehyde dehydrogenase family.
細胞内局在	Cytoplasm.

画像



All lanes : Anti-ALDH1A1 antibody (ab9883) at 0.3 µg/ml

Lane 1 : Human liver lysate (protein in RIPA buffer)

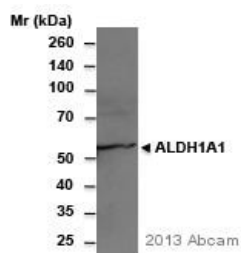
Lane 2 : Rat liver lysate (protein in RIPA buffer)

Lane 3 : Mouse liver lysate (protein in RIPA buffer)

Lysates/proteins at 35 µg per lane.

Predicted band size: 55 kDa

Detected by chemiluminescence.



Western blot - Anti-ALDH1A1 antibody (ab9883)

This image is courtesy of an anonymous Abreview

Anti-ALDH1A1 antibody (ab9883) at 1/500 dilution + MDBK cell lysate at 100 µg

Secondary

HRP-conjugated Donkey anti-goat IgG

Predicted band size: 55 kDa

Please note: All products are "FOR RESEARCH USE ONLY. NOT FOR USE IN DIAGNOSTIC PROCEDURES"

Our Abpromise to you: Quality guaranteed and expert technical support

- Replacement or refund for products not performing as stated on the datasheet
- Valid for 12 months from date of delivery
- Response to your inquiry within 24 hours
- We provide support in Chinese, English, French, German, Japanese and Spanish
- Extensive multi-media technical resources to help you
- We investigate all quality concerns to ensure our products perform to the highest standards

If the product does not perform as described on this datasheet, we will offer a refund or replacement. For full details of the Abpromise, please visit <https://www.abcam.co.jp/abpromise> or contact our technical team.

Terms and conditions

- Guarantee only valid for products bought direct from Abcam or one of our authorized distributors