


# Anti-Aldehyde dehydrogenase 10 antibody [EPR15425(B)] ab184171

KO 評価済 リコンビナント RabMAb

★★★★☆ 1 Abreviews 画像数 6

### 製品の概要

製品名	Anti-Aldehyde dehydrogenase 10 antibody [EPR15425(B)]
製品の詳細	Rabbit monoclonal [EPR15425(B)] to Aldehyde dehydrogenase 10
由来種	Rabbit
アプリケーション	適用あり: WB, ICC/IF, Flow Cyt (Intra)
種交差性	交差種: Human 交差が予測される動物種: Mouse 
免疫原	Synthetic peptide. This information is proprietary to Abcam and/or its suppliers.
ポジティブ・コントロール	HeLa, A549, 293T and U87-MG cell lysates; A549 and HepG2 cells.
特記事項	This product is a recombinant monoclonal antibody, which offers several advantages including: <ul style="list-style-type: none"><li>- High batch-to-batch consistency and reproducibility</li><li>- Improved sensitivity and specificity</li><li>- Long-term security of supply</li><li>- Animal-free production</li></ul> For more information <a href="#">see here</a> . Our RabMAb <sup>®</sup> technology is a patented hybridoma-based technology for making rabbit monoclonal antibodies. For details on our patents, please refer to <a href="#">RabMAb<sup>®</sup> patents</a> .

### 製品の特性

製品の状態	Liquid
保存方法	Shipped at 4°C. Store at +4°C short term (1-2 weeks). Upon delivery aliquot. Store at -20°C long term. Avoid freeze / thaw cycle.
バッファー	pH: 7.2 Preservative: 0.01% Sodium azide Constituents: 59% PBS, 40% Glycerol (glycerin, glycerine), 0.05% BSA
精製度	Protein A purified
ポリ/モノ	モノクローナル
クローン名	EPR15425(B)

アイソタイプ

IgG

## アプリケーション

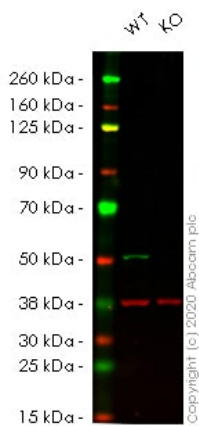
**The Abpromise guarantee** **Abpromise保証は、** 次のテスト済みアプリケーションにおけるab184171の使用に適用されます  
アプリケーションノートには、推奨の開始希釈率がありますが、適切な希釈率につきましてはご確認ください。

アプリケーション	Abreviews	特記事項
WB	★★★★☆ (1)	1/1000 - 1/10000. Detects a band of approximately 55 kDa (predicted molecular weight: 55 kDa).
ICC/IF		1/250.
Flow Cyt (Intra)		1/170. <b>ab172730</b> - Rabbit monoclonal IgG, is suitable for use as an isotype control with this antibody.

## ターゲット情報

機能	Catalyzes the oxidation of long-chain aliphatic aldehydes to fatty acids. Active on a variety of saturated and unsaturated aliphatic aldehydes between 6 and 24 carbons in length.
関連疾患	Defects in ALDH3A2 are the cause of Sjogren-Larsson syndrome (SLS) [MIM:270200]. SLS is an autosomal recessive neurocutaneous disorder characterized by a combination of severe mental retardation, spastic di- or tetraplegia and congenital ichthyosis (increased keratinization). Ichthyosis is usually evident at birth, neurologic symptoms appear in the first or second year of life. Most patients have an IQ of less than 60. Additional clinical features include glistening white spots on the retina, seizures, short stature and speech defects.
配列類似性	Belongs to the aldehyde dehydrogenase family.
細胞内局在	Endoplasmic reticulum membrane.

## 画像



Western blot - Anti-Aldehyde dehydrogenase 10 antibody [EPR15425(B)] (ab184171)

**All lanes** : Anti-Aldehyde dehydrogenase 10 antibody [EPR15425(B)] (ab184171) at 1/1000 dilution

**Lane 1** : Wild-type HeLa cell lysate

**Lane 2** : ALDH3A2 knockout HeLa cell lysate

Lysates/proteins at 20 µg per lane.

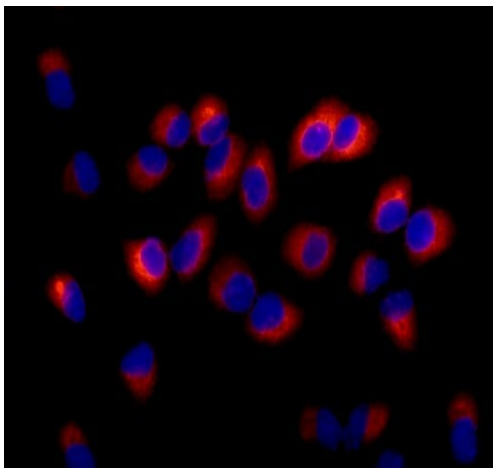
Performed under reducing conditions.

**Predicted band size:** 55 kDa

**Observed band size:** 50 kDa

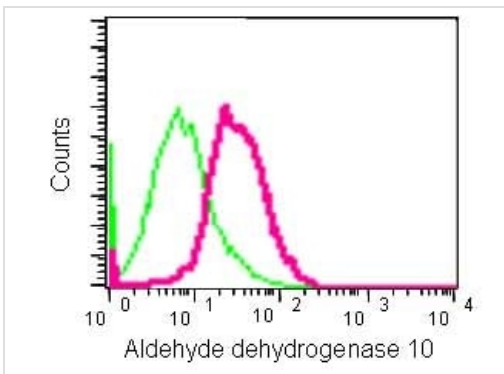
**Lanes 1 - 2:** Merged signal (red and green). Green - ab184171 observed at 50 kDa. Red - loading control **ab8245** (Mouse anti-GAPDH antibody [6C5]) observed at 37 kDa.

ab184171 was shown to react with ALDH3A2 in wild-type HeLa cells in Western blot with loss of signal observed in ALDH3A2 knockout cell line **ab265427** (ALDH3A2 knockout cell lysate **ab257829**). Wild-type and ALDH3A2 knockout HeLa cell lysates were subjected to SDS-PAGE. Membranes were blocked in 3 % milk in TBS-T (0.1 % Tween®) before incubation with ab184171 and **ab8245** (Mouse anti-GAPDH antibody [6C5]) overnight at 4 °C at a 1 in 1000 dilution and a 1 in 20000 dilution respectively. Blots were incubated with Goat anti-Rabbit IgG H&L (IRDye® 800CW) preabsorbed (**ab216773**) and Goat anti-Mouse IgG H&L (IRDye® 680RD) preabsorbed (**ab216776**) secondary antibodies at 1 in 20000 dilution for 1 h at room temperature before imaging.



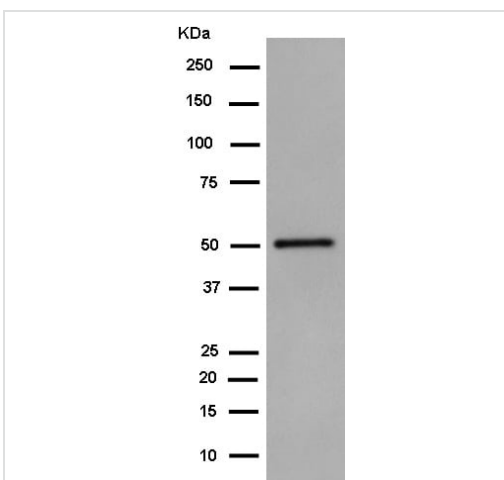
Immunocytochemistry/ Immunofluorescence - Anti-Aldehyde dehydrogenase 10 antibody [EPR15425(B)] (ab184171)

Immunofluorescence analysis of 4% paraformaldehyde fixed A549 cells labeling Aldehyde dehydrogenase 10 using ab184171 at 1/250 dilution (red). A Goat anti rabbit IgG (Alexa Fluor555) at 1/200 dilution was used as secondary antibody. Counterstain: DAPI (blue).



Flow Cytometry (Intracellular) - Anti-Aldehyde dehydrogenase 10 antibody [EPR15425(B)] (ab184171)

Intracellular flow cytometric analysis of 2% paraformaldehyde fixed HepG2 cells labeling Aldehyde dehydrogenase 10 using ab184171 at 1/170 dilution (red). A Goat anti rabbit IgG (FITC) at 1/150 dilution was used as secondary antibody. Isotype control: Rabbit monoclonal IgG (green).



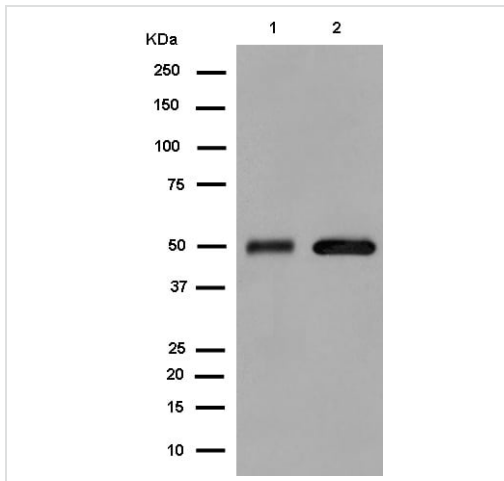
Western blot - Anti-Aldehyde dehydrogenase 10 antibody [EPR15425(B)] (ab184171)

Anti-Aldehyde dehydrogenase 10 antibody [EPR15425(B)] (ab184171) at 1/10000 dilution + U87-MG cell lysate at 20  $\mu$ g

**Secondary**

Goat Anti-Rabbit IgG, (H+L), Peroxidase conjugated at 1/1000 dilution

**Predicted band size: 55 kDa**



Western blot - Anti-Aldehyde dehydrogenase 10 antibody [EPR15425(B)] (ab184171)

**All lanes :** Anti-Aldehyde dehydrogenase 10 antibody [EPR15425(B)] (ab184171) at 1/2000 dilution

**Lane 1 :** A549 cell lysate

**Lane 2 :** 293T cell lysate

Lysates/proteins at 20 µg per lane.

**Secondary**

**All lanes :** Goat Anti-Rabbit IgG, (H+L), Peroxidase conjugated at 1/1000 dilution

**Predicted band size:** 55 kDa

Why choose a recombinant antibody?

 <b>Research with confidence</b> Consistent and reproducible results	 <b>Long-term and scalable supply</b> Recombinant technology
 <b>Success from the first experiment</b> Confirmed specificity	 <b>Ethical standards compliant</b> Animal-free production

Anti-Aldehyde dehydrogenase 10 antibody [EPR15425(B)] (ab184171)

**Please note:** All products are "FOR RESEARCH USE ONLY. NOT FOR USE IN DIAGNOSTIC PROCEDURES"

**Our Abpromise to you: Quality guaranteed and expert technical support**

- Replacement or refund for products not performing as stated on the datasheet
- Valid for 12 months from date of delivery
- Response to your inquiry within 24 hours
- We provide support in Chinese, English, French, German, Japanese and Spanish
- Extensive multi-media technical resources to help you
- We investigate all quality concerns to ensure our products perform to the highest standards

If the product does not perform as described on this datasheet, we will offer a refund or replacement. For full details of the Abpromise, please visit <https://www.abcam.co.jp/abpromise> or contact our technical team.

## Terms and conditions

---

- Guarantee only valid for products bought direct from Abcam or one of our authorized distributors