

Anti-Alcohol Dehydrogenase antibody [EPR4439] ab108203

リコンビナント **RabMAb**

★★★★★ **6 Abreviews** **5 References** 画像数 5

製品の概要

製品名	Anti-Alcohol Dehydrogenase antibody [EPR4439]
製品の詳細	Rabbit monoclonal [EPR4439] to Alcohol Dehydrogenase
由来種	Rabbit
アプリケーション	適用あり: ICC/IF, WB, IHC-P 適用なし: Flow Cyt or IP
種交差性	交差種: Mouse, Rat, Human
免疫原	Synthetic peptide. This information is proprietary to Abcam and/or its suppliers.
ポジティブ・コントロール	WB: lysate from HepG2 cells, Human fetal, mouse or rat liver; IHC-P: Human liver tissue; ICC/IF: HepG2 cells.
特記事項	<p>This product is a recombinant monoclonal antibody, which offers several advantages including:</p> <ul style="list-style-type: none"> - High batch-to-batch consistency and reproducibility - Improved sensitivity and specificity - Long-term security of supply - Animal-free production <p>For more information see here.</p> <p>Our RabMAb[®] technology is a patented hybridoma-based technology for making rabbit monoclonal antibodies. For details on our patents, please refer to RabMAb[®] patents.</p>

製品の特性

製品の状態	Liquid
保存方法	Shipped at 4°C. Store at -20°C. Stable for 12 months at -20°C.
バッファー	<p>pH: 7.20</p> <p>Preservative: 0.05% Sodium azide</p> <p>Constituents: 0.1% BSA, 40% Glycerol (glycerin, glycerine), 9.85% Tris glycine, 50% Tissue culture supernatant</p>
精製度	Tissue culture supernatant
ポリ/モノ	モノクローナル
クローン名	EPR4439

アイソタイプIgG

アプリケーション

The Abpromise guarantee Abpromise保証は、 次のテスト済みアプリケーションにおけるab108203の使用に適用されます
アプリケーションノートには、推奨の開始希釈率がありますが、適切な希釈率につきましてはご検討ください。

アプリケーション	Abreviews	特記事項
ICC/IF	★★★★☆ (3)	1/500 - 1/1000.
WB	★★★★★ (3)	1/1000 - 1/10000. Predicted molecular weight: 40 kDa.
IHC-P		1/250 - 1/500. Perform heat mediated antigen retrieval before commencing with IHC staining protocol. Heat up to 98 degrees C, below boiling, and then let cool for 10-20 min.

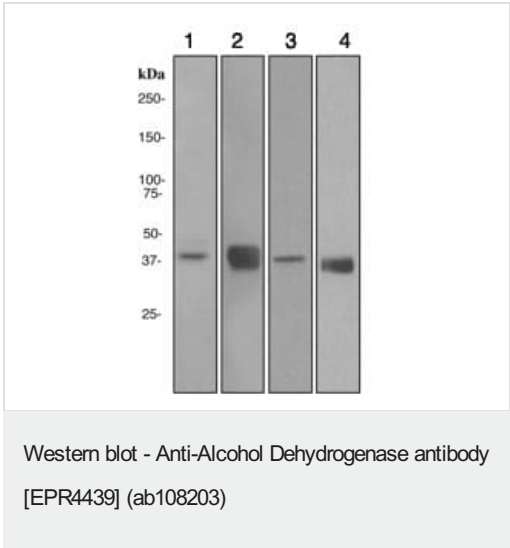
追加情報 Is unsuitable for Flow Cyt or IP.

ターゲット情報

配列類似性 Belongs to the zinc-containing alcohol dehydrogenase family.

細胞内局在 Cytoplasm.

画像

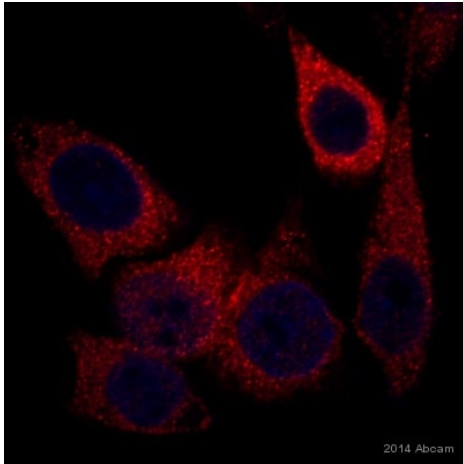


All lanes : Anti-Alcohol Dehydrogenase antibody [EPR4439]
(ab108203) at 1/1000 dilution

- Lane 1 :** HepG2 cell lysate
- Lane 2 :** Mouse liver tissue lysate
- Lane 3 :** Human fetal liver tissue lysate
- Lane 4 :** Rat liver tissue lysate

Lysates/proteins at 10 µg per lane.

Predicted band size: 40 kDa

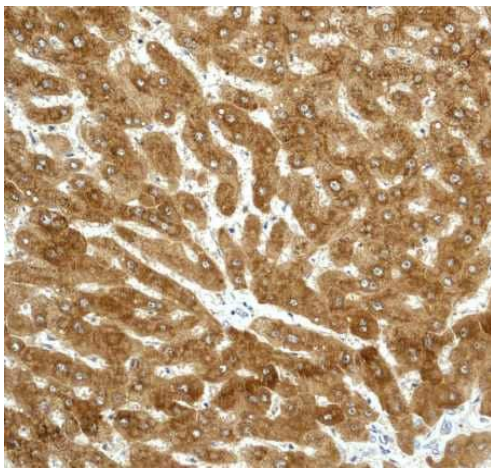


Immunocytochemistry/ Immunofluorescence - Anti-Alcohol Dehydrogenase antibody [EPR4439] (ab108203)

This image is courtesy of an Abreview submitted by Armen Petrosyan

ab108203 staining Alcohol Dehydrogenase in the HepG2 cell line from Human liver by ICC/IF

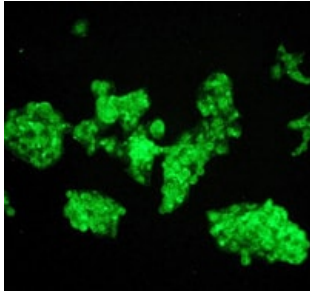
(Immunocytochemistry/immunofluorescence). Cells were fixed with formaldehyde and blocked with 1% Serum for 60 minutes at 22°C. Samples were incubated with primary antibody (1/50) for 1 hour at 22°C. An Alexa Fluor®594-conjugated Donkey anti-rabbit polyclonal was used as the secondary antibody. Nucleus was stained with DAPI (blue).



Immunohistochemistry (Formalin/PFA-fixed paraffin-embedded sections) - Anti-Alcohol Dehydrogenase antibody [EPR4439] (ab108203)

ab108203 at 1/250 dilution staining Alcohol Dehydrogenase in paraffin-embedded Human liver tissue.

Perform heat mediated antigen retrieval before commencing with IHC staining protocol.



ab108203 at 1/500 dilution staining Alcohol Dehydrogenase in HepG2 cells by Immunofluorescence.

Immunocytochemistry/ Immunofluorescence - Anti-Alcohol Dehydrogenase antibody [EPR4439] (ab108203)

Why choose a recombinant antibody?



Research with confidence
Consistent and reproducible results



Long-term and scalable supply
Recombinant technology



Success from the first experiment
Confirmed specificity



Ethical standards compliant
Animal-free production

Anti-Alcohol Dehydrogenase antibody [EPR4439] (ab108203)

Please note: All products are "FOR RESEARCH USE ONLY. NOT FOR USE IN DIAGNOSTIC PROCEDURES"

Our Abpromise to you: Quality guaranteed and expert technical support

- Replacement or refund for products not performing as stated on the datasheet
- Valid for 12 months from date of delivery
- Response to your inquiry within 24 hours
- We provide support in Chinese, English, French, German, Japanese and Spanish
- Extensive multi-media technical resources to help you
- We investigate all quality concerns to ensure our products perform to the highest standards

If the product does not perform as described on this datasheet, we will offer a refund or replacement. For full details of the Abpromise, please visit <https://www.abcam.co.jp/abpromise> or contact our technical team.

Terms and conditions

- Guarantee only valid for products bought direct from Abcam or one of our authorized distributors