

### Anti-Albumin antibody ab106582

★★★★★ [11 Abreviews](#) [49 References](#) [画像数 4](#)

#### 製品の概要

製品名	Anti-Albumin antibody
製品の詳細	Chicken polyclonal to Albumin
由来種	Chicken
アプリケーション	<b>適用あり:</b> WB, IHC-P
種交差性	<b>交差種:</b> Mouse, Human
免疫原	Synthetic peptide corresponding to Human Albumin (internal sequence). The immunogen is located within amino acids 340 - 390 of Albumin. Database link: <a href="#">P02768</a>
ポジティブ・コントロール	Mouse liver lysate; Human liver tissue
特記事項	Antibodies should not be exposed to prolonged high temperatures.  The Life Science industry has been in the grips of a reproducibility crisis for a number of years. Abcam is leading the way in addressing this with our range of recombinant monoclonal antibodies and knockout edited cell lines for gold-standard validation. Please check that this product meets your needs before purchasing.  If you have any questions, special requirements or concerns, please send us an inquiry and/or contact our Support team ahead of purchase. Recommended alternatives for this product can be found below, along with publications, customer reviews and Q&As

#### 製品の特性

製品の状態	Liquid
保存方法	Shipped at 4°C. Store at +4°C short term (1-2 weeks). Store at +4°C.
バッファー	pH: 7.2 Preservative: 0.02% Sodium azide Constituent: PBS
精製度	Immunogen affinity purified
ポリ/モノ	ポリクローナル
アイソタイプ	IgY

#### アプリケーション

## The Abpromise guarantee

**Abpromise保証は、次のテスト済みアプリケーションにおけるab106582の使用に適用されます**

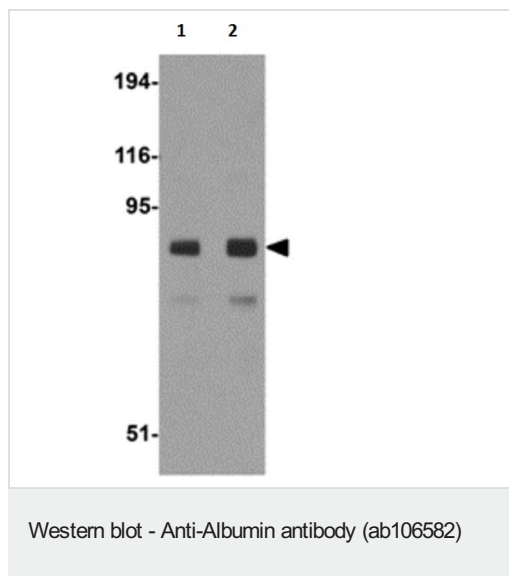
アプリケーションノートには、推奨の開始希釈率がありますが、適切な希釈率につきましてはご確認ください。

アプリケーション	Abreviews	特記事項
WB		Use a concentration of 1 - 2 µg/ml. Predicted molecular weight: 69 kDa.
IHC-P	★★★★★ (7)	Use a concentration of 2.5 - 20 µg/ml.
IF		Use a concentration of 20 µg/ml.

## ターゲット情報

機能	Serum albumin, the main protein of plasma, has a good binding capacity for water, Ca(2+), Na(+), K(+), fatty acids, hormones, bilirubin and drugs. Its main function is the regulation of the colloidal osmotic pressure of blood. Major zinc transporter in plasma, typically binds about 80% of all plasma zinc.
組織特異性	Plasma.
関連疾患	Defects in ALB are a cause of familial dysalbuminemic hyperthyroxinemia (FDH) [MIM:103600]. FDH is a form of euthyroid hyperthyroxinemia that is due to increased affinity of ALB for T(4). It is the most common cause of inherited euthyroid hyperthyroxinemia in Caucasian population.
配列類似性	Belongs to the ALB/AFP/VDB family. Contains 3 albumin domains.
翻訳後修飾	Kenitra variant is partially O-glycosylated at Thr-620. It has two new disulfide bonds Cys-600 to Cys-602 and Cys-601 to Cys-606. Glycated in diabetic patients. Phosphorylation sites are present in the extracellular medium. Acetylated on Lys-223 by acetylsalicylic acid.
細胞内局在	Secreted.
製品の状態	There are 2 isoforms produced by alternative splicing.

## 画像



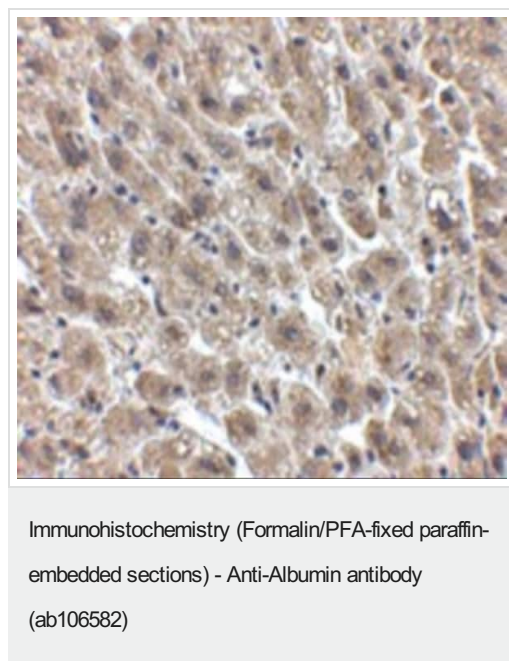
**Lane 1 :** Anti-Albumin antibody (ab106582) at 1 µg/ml

**Lane 2 :** Anti-Albumin antibody (ab106582) at 2 µg/ml

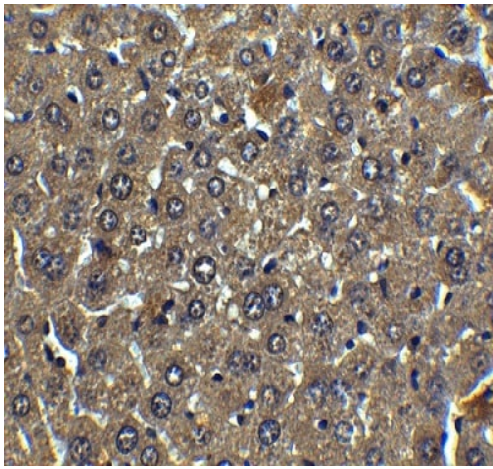
**All lanes :** Mouse liver tissue lysate

Lysates/proteins at 15 µg per lane.

**Predicted band size:** 69 kDa

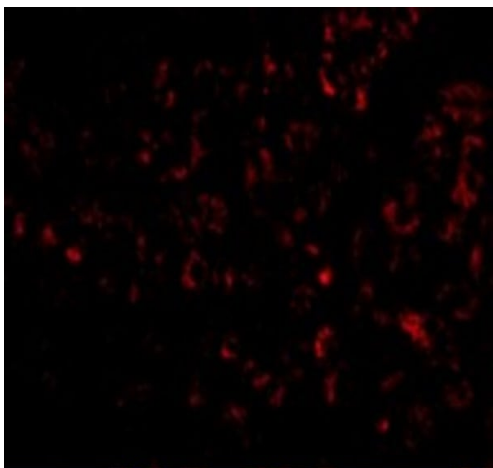


Immunohistochemical analysis of paraffin embedded Human liver tissue section labelling Albumin with ab106582 at 2.5 µg/ml.



Immunohistochemical analysis of paraffin embedded Mouse liver tissue section labelling Albumin with ab106582 at 5 µg/ml.

Immunohistochemistry (Formalin/PFA-fixed paraffin-embedded sections) - Anti-Albumin antibody (ab106582)



Immunofluorescence analysis of paraffin embedded mouse liver tissue section labelling Albumin with ab106582 at 20 µg/mL.

Immunofluorescence - Anti-Albumin antibody (ab106582)

**Please note:** All products are "FOR RESEARCH USE ONLY. NOT FOR USE IN DIAGNOSTIC PROCEDURES"

### Our Abpromise to you: Quality guaranteed and expert technical support

- Replacement or refund for products not performing as stated on the datasheet
- Valid for 12 months from date of delivery
- Response to your inquiry within 24 hours
- We provide support in Chinese, English, French, German, Japanese and Spanish

- Extensive multi-media technical resources to help you
- We investigate all quality concerns to ensure our products perform to the highest standards

If the product does not perform as described on this datasheet, we will offer a refund or replacement. For full details of the Abpromise, please visit <https://www.abcam.co.jp/abpromise> or contact our technical team.

#### **Terms and conditions**

---

- Guarantee only valid for products bought direct from Abcam or one of our authorized distributors