

Anti-AKT3 antibody [EPR19412-161] - BSA and Azide free (Capture/Detector) ab242892

リコンビナント **RabMAb**

画像数 3

製品の概要

製品名	Anti-AKT3 antibody [EPR19412-161] - BSA and Azide free (Capture/Detector)
製品の詳細	Rabbit monoclonal [EPR19412-161] to AKT3 - BSA and Azide free (Capture/Detector)
由来種	Rabbit
アプリケーション	適用あり: Sandwich ELISA
種交差性	交差種: Human
免疫原	Recombinant fragment. This information is proprietary to Abcam and/or its suppliers.
特記事項	<p>ab242892 is a BSA and Azide Free antibody supplied in an unconjugated format and it is suitable for sandwich ELISAs to quantify Human AKT3. The recommended pair for sandwich ELISA is:</p> <p>Capture: ab242647, Human AKT3 Capture Antibody (unconjugated)</p> <p>Detector: ab242892, Human AKT3 Detector Antibody (unconjugated)</p> <p>The reference range value is 312 - 20000 pg/ml.</p> <p>Or alternatively, you can use:</p> <p>Capture: ab242892, Human AKT3 (pS473) Capture Antibody (unconjugated)</p> <p>Detector: ab272367, Human AKT3 (pS473) Detector Antibody (unconjugated)</p> <p>The reference range value is 46.88 - 3000 U/ml.</p> <p>Our carrier-free antibodies are typically supplied in a PBS-only formulation, purified and free of BSA, sodium azide and glycerol. The carrier-free buffer and high concentration allow for increased conjugation efficiency.</p> <p>This conjugation-ready format is designed for use with fluorochromes, metal isotopes, oligonucleotides, and enzymes, which makes them ideal for antibody labelling, functional and cell-based assays, flow-based assays (e.g. mass cytometry) and Multiplex Imaging applications.</p> <p>Use our conjugation kits for antibody conjugates that are ready-to-use in as little as 20 minutes with <1 minute hands-on-time and 100% antibody recovery: available for fluorescent dyes, HRP, biotin and gold.</p> <p>The recommended antibody orientation is based on internal optimization for ELISA-based assays. Antibody orientation is assay dependent and needs to be optimized for each assay type. Please note that the range provided for this antibody is only an estimation based on the performance of the product using the recommended antibody pair. Performance of the antibody</p>

pair will depend on the specific characteristics of your assay. We guarantee the product works in sandwich ELISA, but we do not guarantee the sensitivity or dynamic range of the antibody in your assay.

This product is a recombinant monoclonal antibody, which offers several advantages including:

- High batch-to-batch consistency and reproducibility
- Improved sensitivity and specificity
- Long-term security of supply
- Animal-free production

For more information [see here](#).

Our RabMAb[®] technology is a patented hybridoma-based technology for making rabbit monoclonal antibodies. For details on our patents, please refer to [RabMAb[®] patents](#).

製品の特性

製品の状態	Liquid
保存方法	Shipped at 4°C. Store at +4°C.
バッファー	Constituent: 100% PBS
キャリア・フリー	はい
精製度	Protein A purified
ポリ/モノ	モノクローナル
クローン名	EPR19412-161
アイソタイプ	IgG

アプリケーション

The Abpromise guarantee [Abpromise保証は、](#) 次のテスト済みアプリケーションにおけるab242892の使用に適用されます
アプリケーションノートには、推奨の開始希釈率がありますが、適切な希釈率につきましてはご検討ください。

アプリケーション	Abreviews	特記事項
Sandwich ELISA		Use at an assay dependent concentration. Can be paired for Sandwich ELISA with Rabbit monoclonal [EPR19412-151] to AKT3 - BSA and Azide free (Capture) (ab242647) and Rabbit monoclonal [EPR18853] to AKT3 (phospho S472) + AKT2 (phospho S474) + AKT1 (phospho S473) - BSA and Azide free (Detector) (ab272367) .

ターゲット情報

機能	IGF-1 leads to the activation of AKT3, which may play a role in regulating cell survival. Capable of phosphorylating several known proteins. Truncated isoform 2/PKB gamma 1 without the second serine phosphorylation site could still be stimulated but to a lesser extent.
組織特異性	In adult tissues, it is highly expressed in brain, lung and kidney, but weakly in heart, testis and liver. In fetal tissues, it is highly expressed in heart, liver and brain and not at all in kidney.
配列類似性	Belongs to the protein kinase superfamily. AGC Ser/Thr protein kinase family. RAC subfamily.

Contains 1 AGC-kinase C-terminal domain.

Contains 1 PH domain.

Contains 1 protein kinase domain.

ドメイン

Binding of the PH domain to the phosphatidylinositol 3-kinase alpha (PI(3)K) results in its targeting to the plasma membrane.

翻訳後修飾

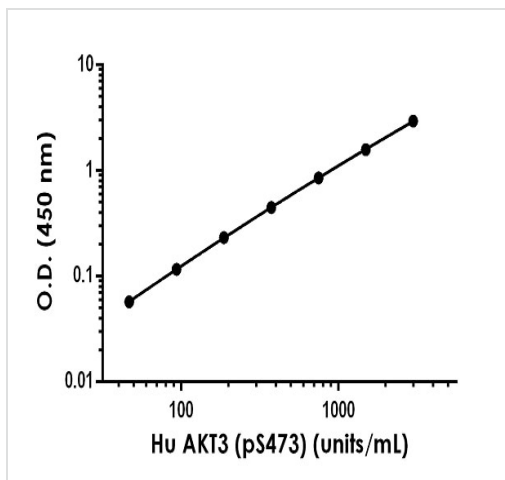
Phosphorylation on Thr-305 and Ser-472 is required for full activity (By similarity). Phosphorylated upon DNA damage, probably by ATM or ATR.

Ubiquitinated. When fully phosphorylated and translocated into the nucleus, undergoes 'Lys-48'-polyubiquitination catalyzed by TTC3, leading to its degradation by the proteasome.

細胞内局在

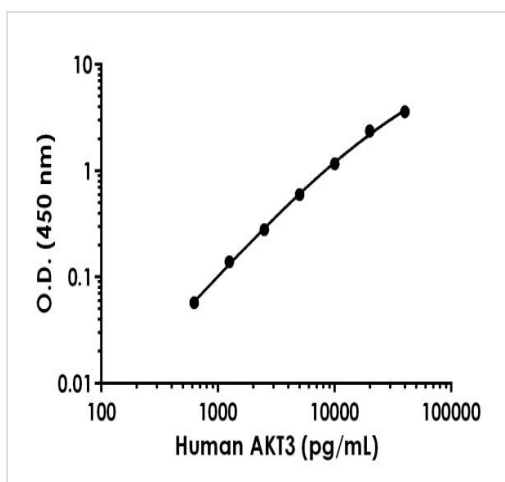
Cytoplasm. Membrane. Membrane-associated after cell stimulation leading to its translocation.

画像



Representative standard curve from corresponding SimpleStep ELISA® Kit ([ab270887](#)).

Sandwich ELISA - Anti-AKT3 antibody [EPR19412-161] - BSA and Azide free (Capture/Detector) (ab242892)



Representative standard curve from corresponding SimpleStep ELISA® Kit ([ab216946](#)).

Sandwich ELISA - Anti-AKT3 antibody [EPR19412-161] - BSA and Azide free (Capture/Detector) (ab242892)

Why choose a recombinant antibody?



Research with confidence
Consistent and reproducible results



Long-term and scalable supply
Recombinant technology



Success from the first experiment
Confirmed specificity



Ethical standards compliant
Animal-free production

Anti-AKT3 antibody [EPR19412-161] - BSA and Azide free (Capture/Detector) (ab242892)

Please note: All products are "FOR RESEARCH USE ONLY. NOT FOR USE IN DIAGNOSTIC PROCEDURES"

Our Abpromise to you: Quality guaranteed and expert technical support

- Replacement or refund for products not performing as stated on the datasheet
- Valid for 12 months from date of delivery
- Response to your inquiry within 24 hours
- We provide support in Chinese, English, French, German, Japanese and Spanish
- Extensive multi-media technical resources to help you
- We investigate all quality concerns to ensure our products perform to the highest standards

If the product does not perform as described on this datasheet, we will offer a refund or replacement. For full details of the Abpromise, please visit <https://www.abcam.co.jp/abpromise> or contact our technical team.

Terms and conditions

- Guarantee only valid for products bought direct from Abcam or one of our authorized distributors