

# Anti-AKT1 (pS473) + AKT2 (pS474) + AKT3 (pS472) antibody [EPR18853] - BSA and Azide free (Detector) ab272367

リコンビナント **RabMAb**

画像数 3

### 製品の概要

<b>製品名</b>	Anti-AKT1 (pS473) + AKT2 (pS474) + AKT3 (pS472) antibody [EPR18853] - BSA and Azide free (Detector)
<b>製品の詳細</b>	Rabbit monoclonal [EPR18853] to AKT3 (phospho S472) + AKT2 (phospho S474) + AKT1 (phospho S473) - BSA and Azide free (Detector)
<b>由来種</b>	Rabbit
<b>アプリケーション</b>	<b>適用あり:</b> Sandwich ELISA, Dot blot
<b>種交差性</b>	<b>交差種:</b> Human
<b>免疫原</b>	Synthetic peptide. This information is proprietary to Abcam and/or its suppliers.
<b>特記事項</b>	<p>ab272367 is a BSA and Azide Free antibody supplied in an unconjugated format and it is suitable for sandwich ELISAs to quantify Human AKT3 (pS473). The recommended pair for sandwich ELISA is:</p> <p>Capture: <a href="#">ab242892</a>, Human AKT3 (pS473) Capture Antibody (unconjugated)            Detector: ab272367, Human AKT3 (pS473) Detector Antibody (unconjugated)            The reference range value is 46.88 - 3000 U/ml.</p> <p>Our <b>carrier-free</b> antibodies are typically supplied in a PBS-only formulation, purified and free of BSA, sodium azide and glycerol. The carrier-free buffer and high concentration allow for increased conjugation efficiency.</p> <p>This conjugation-ready format is designed for use with fluorochromes, metal isotopes, oligonucleotides, and enzymes, which makes them ideal for antibody labelling, functional and cell-based assays, flow-based assays (e.g. mass cytometry) and Multiplex Imaging applications.</p> <p>Use our <b>conjugation kits</b> for antibody conjugates that are ready-to-use in as little as 20 minutes with &lt;1 minute hands-on-time and 100% antibody recovery: available for fluorescent dyes, HRP, biotin and gold.</p> <p>The recommended antibody orientation is based on internal optimization for ELISA-based assays. Antibody orientation is assay dependent and needs to be optimized for each assay type. Please note that the range provided for this antibody is only an estimation based on the performance of the product using the recommended antibody pair. Performance of the antibody pair will depend on the specific characteristics of your assay. We guarantee the product works in sandwich ELISA, but we do not guarantee the sensitivity or dynamic range of the antibody in your assay.</p>

This product is a recombinant monoclonal antibody, which offers several advantages including:

- High batch-to-batch consistency and reproducibility
- Improved sensitivity and specificity
- Long-term security of supply
- Animal-free production

For more information [see here](#).

Our RabMAb<sup>®</sup> technology is a patented hybridoma-based technology for making rabbit monoclonal antibodies. For details on our patents, please refer to [RabMAb<sup>®</sup> patents](#).

## 製品の特徴

製品の状態	Liquid
保存方法	Shipped at 4°C. Store at +4°C.
バッファー	Constituent: 100% PBS
キャリア・フリー	はい
精製度	Protein A purified
ポリクローナル	モノクローナル
クローン名	EPR18853
アイソタイプ	IgG

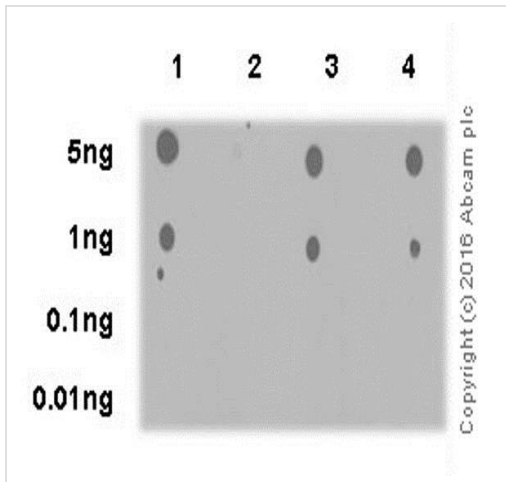
## アプリケーション

**The Abpromise guarantee**      **Abpromise保証は、** 次のテスト済みアプリケーションにおけるab272367の使用に適用されず  
アプリケーションノートには、推奨の開始希釈率がありますが、適切な希釈率につきましてはご検討ください。

アプリケーション	Abreviews	特記事項
<b>Sandwich ELISA</b>		Use at an assay dependent concentration. Can be paired for Sandwich ELISA with <b><u>PE / R-Phycoerythrin Conjugation Kit - Lightning-Link<sup>®</sup> (ab102918)</u></b> and <b><u>Biotinylation Kit / Biotin Conjugation Kit (Fast and Type A) - Lightning-Link<sup>®</sup> (ab201795)</u></b> .
<b>Dot blot</b>		Use at an assay dependent concentration.

## ターゲット情報

**細胞内局在**      AKT3: Cytoplasm. Membrane. Membrane-associated after cell stimulation leading to its translocation. AKT1: Cytoplasm. Nucleus. Cell membrane. Nucleus after activation by integrin-linked protein kinase 1 (ILK1). Nuclear translocation is enhanced by interaction with TCL1A. Phosphorylation on Tyr-176 by TNK2 results in its localization to the cell membrane where it is targeted for further phosphorylations on Thr-308 and Ser-473 leading to its activation and the activated form translocates to the nucleus.



Dot Blot - Anti-AKT1 (pS473) + AKT2 (pS474) + AKT3 (pS472) antibody [EPR18853] - BSA and Azide free (Detector) (ab272367)

This data was developed using the same antibody clone in a different buffer formulation containing PBS, BSA, glycerol, and sodium azide ([ab192623](#)).

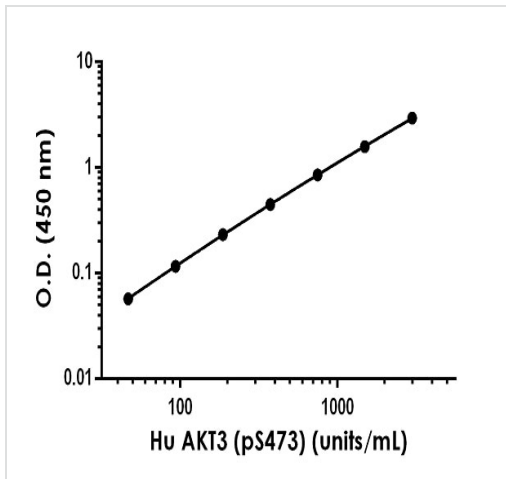
Dot blot analysis of AKT3 (phospho S472) labeled with [ab192623](#) at 1/1000 dilution.

- Lane 1: AKT3 (phospho S472) phospho peptide;
- Lane 2: AKT3 non-phospho peptide;
- Lane 3: AKT1 (phospho S473) phospho peptide;
- Lane 4: AKT2 (phospho S474) phospho peptide.

Goat Anti-Rabbit IgG, (H+L), Peroxidase conjugated ([ab97051](#)) at 1/100000 dilution was used as secondary antibody.

Blocking and diluting buffer: 5% NFDm/TBST.

Exposure time: 3 minutes.



Sandwich ELISA - Anti-AKT1 (pS473) + AKT2 (pS474) + AKT3 (pS472) antibody [EPR18853] - BSA and Azide free (Detector) (ab272367)

Representative standard curve from corresponding SimpleStep ELISA® Kit ([ab270887](#)).

### Why choose a recombinant antibody?



**Research with confidence**  
Consistent and reproducible results



**Long-term and scalable supply**  
Recombinant technology



**Success from the first experiment**  
Confirmed specificity



**Ethical standards compliant**  
Animal-free production

Anti-AKT1 (pS473) + AKT2 (pS474) + AKT3 (pS472)  
antibody [EPR18853] - BSA and Azide free  
(Detector) (ab272367)

**Please note:** All products are "FOR RESEARCH USE ONLY. NOT FOR USE IN DIAGNOSTIC PROCEDURES"

### Our Abpromise to you: Quality guaranteed and expert technical support

---

- Replacement or refund for products not performing as stated on the datasheet
- Valid for 12 months from date of delivery
- Response to your inquiry within 24 hours
- We provide support in Chinese, English, French, German, Japanese and Spanish
- Extensive multi-media technical resources to help you
- We investigate all quality concerns to ensure our products perform to the highest standards

If the product does not perform as described on this datasheet, we will offer a refund or replacement. For full details of the Abpromise, please visit <https://www.abcam.co.jp/abpromise> or contact our technical team.

### Terms and conditions

---

- Guarantee only valid for products bought direct from Abcam or one of our authorized distributors