


Anti-Adenosine A1 Receptor antibody ab3460

4 References [画像数 3](#)

製品の概要

製品名	Anti-Adenosine A1 Receptor antibody
製品の詳細	Rabbit polyclonal to Adenosine A1 Receptor
由来種	Rabbit
特異性	Detects Adenosine Receptor A1. This antibody does not detect other AR subtypes.
アプリケーション	適用あり: WB, ICC, IHC-P
種交差性	交差種: Rat, Human 交差が予測される動物種: Cow 
免疫原	Synthetic peptide corresponding to Rat Adenosine A1 Receptor aa 309-326. Sequence: CQPKPIDEDLPEEKAED (Peptide available as ab5893) Run BLAST with Run BLAST with
ポジティブ・コントロール	WB: PC-12, SH-SY5Y, U-87MG, A549, K-562 whole cell lysates. ICC: HeLa cells IHC: rat brain tissue.
特記事項	<p>The Life Science industry has been in the grips of a reproducibility crisis for a number of years. Abcam is leading the way in addressing this with our range of recombinant monoclonal antibodies and knockout edited cell lines for gold-standard validation. Please check that this product meets your needs before purchasing.</p> <p>If you have any questions, special requirements or concerns, please send us an inquiry and/or contact our Support team ahead of purchase. Recommended alternatives for this product can be found below, along with publications, customer reviews and Q&As</p>

製品の特性

製品の状態	Liquid
保存方法	Shipped at 4°C. Store at +4°C short term (1-2 weeks). Upon delivery aliquot. Store at -20°C. Avoid freeze / thaw cycle.
バッファー	Preservative: 0.05% Sodium azide Constituents: 99% PBS, 0.1% BSA
精製度	Immunogen affinity purified

一次抗体 備考

Adenosine receptors (ARs) are members of the 7-transmembrane domain G-protein-coupled receptor superfamily. Structural, biochemical and pharmacological analyses of the AR genes and protein has led to the discovery of four distinct AR subtypes (A1, A2a, A2b, A3). Activation of ARs mediates several receptor subtype-specific physiological processes that include cardiac rate, smooth muscle tone, platelet aggregation, inflammation, cell growth and death, and neurotransmission. The A1AR is a glycoprotein that can activate Gi and Go proteins in vitro. In intact cells, agonist occupation of the A1AR has been shown to cause pertussis toxin-sensitive inhibition of adenylyl cyclase activity and, in some systems, a stimulation of phospholipase C resulting in mobilization of intracellular calcium stores. Activation of potassium channels by A1AR has been intensively studied in relation to its dramatic effects on the cardiovascular system. A1AR protein is highly expressed in brain (especially cerebellum, hippocampus, thalamus, and cortex) and spinal cord and in part, modulates neurotransmitter release. In white adipocytes A1AR inhibits lipolysis and stimulates glucose uptake. Other tissues also express A1AR including kidney and testis.

ポリ/モノ

ポリクローナル

アイソタイプ

IgG

アプリケーション

The Abpromise guarantee **Abpromise保証は、次のテスト済みアプリケーションにおけるab3460の使用に適用されます**
アプリケーションノートには、推奨の開始希釈率がありますが、適切な希釈率につきましてはご検討ください。

アプリケーション	Abreviews	特記事項
WB		1/500. Predicted molecular weight: 37 kDa. Can be blocked with Adenosine A1 Receptor peptide (ab5893) .
ICC		Use a concentration of 2 µg/ml.
IHC-P		1/50 - 1/200.

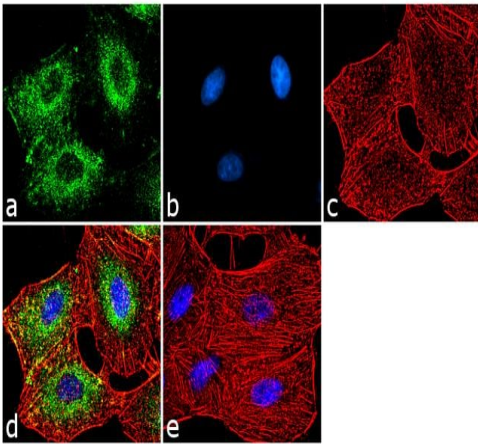
ターゲット情報

機能 Receptor for adenosine. The activity of this receptor is mediated by G proteins which inhibit adenylyl cyclase.

配列類似性 Belongs to the G-protein coupled receptor 1 family.

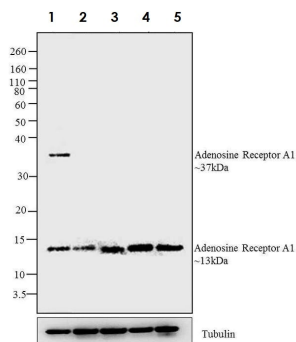
細胞内局在 Cell membrane.

画像



Immunocytochemistry - Anti-Adenosine A1 Receptor antibody (ab3460)

Immunocytochemical analysis of 4% paraformaldehyde-fixed, 0.1% Triton™ X-100 permeabilized HeLa cells staining adenosine A1 receptor with ab3460 at 2 µg/ml and labeled with Goat anti-Rabbit IgG (H+L) Superclonal™ Secondary Antibody, Alexa Fluor® 488 conjugate at 1/2000 dilution (green). Nuclei are stained with SlowFade® Gold Antifade Mountant with DAPI (blue) and F-actin is stained with Alexa Fluor® 555 Rhodamine Phalloidin (red). Negative control contains no primary antibody.



Western blot - Anti-Adenosine A1 Receptor antibody (ab3460)

All lanes : Anti-Adenosine A1 Receptor antibody (ab3460) at 1/250 dilution

Lane 1 : PC-12 whole cell extract

Lane 2 : SH-SY5Y whole cell extract

Lane 3 : U-87 MG whole cell extract

Lane 4 : A549 whole cell extract

Lane 5 : K-562 whole cell extract

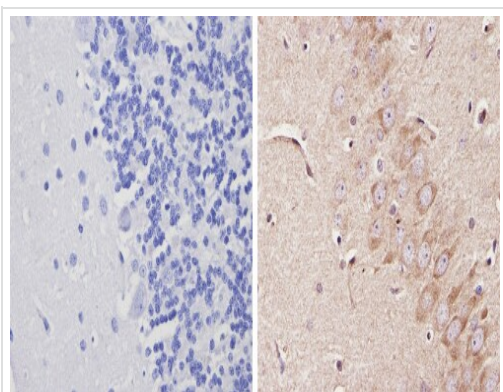
Lysates/proteins at 30 µg per lane.

Secondary

All lanes : Goat Anti-Rabbit IgG Secondary Antibody, HRP conjugate at 1/5000 dilution

Developed using the ECL technique.

Predicted band size: 37 kDa



Immunohistochemistry (Formalin/PFA-fixed paraffin-embedded sections) - Anti-Adenosine A1 Receptor antibody (ab3460)

ab3460 labelling Adenosine A1 receptor in the cytoplasm of Rat brain tissue (right) compared with a negative control (left) by Immunohistochemistry (formalin/PFA-fixed paraffin embedded sections). To expose target proteins, antigen retrieval method was performed using 10mM sodium citrate (pH 6.0) microwaved for 8-15 min. Following antigen retrieval, tissues were blocked in 3% H₂O₂-methanol for 15 min at room temperature. Tissue sections were incubated with the primary antibody (1:100 in 3% BSA-PBS) overnight at 4°C. A HRP-conjugated anti-rabbit IgG was used as the secondary antibody, followed by colorimetric detection using a DAB kit. Tissues were counterstained with hematoxylin and dehydrated with ethanol and xylene to prep for mounting.

Please note: All products are "FOR RESEARCH USE ONLY. NOT FOR USE IN DIAGNOSTIC PROCEDURES"

Our Abpromise to you: Quality guaranteed and expert technical support

- Replacement or refund for products not performing as stated on the datasheet
- Valid for 12 months from date of delivery
- Response to your inquiry within 24 hours
- We provide support in Chinese, English, French, German, Japanese and Spanish
- Extensive multi-media technical resources to help you
- We investigate all quality concerns to ensure our products perform to the highest standards

If the product does not perform as described on this datasheet, we will offer a refund or replacement. For full details of the Abpromise, please visit <https://www.abcam.co.jp/abpromise> or contact our technical team.

Terms and conditions

- Guarantee only valid for products bought direct from Abcam or one of our authorized distributors