

# Anti-ADAM12 antibody - Aminoterminal end ab39155

★★★★☆ [3 Abreviews](#) [8 References](#) [画像数 1](#)

### 製品の概要

製品名	Anti-ADAM12 antibody - Aminoterminal end
製品の詳細	Rabbit polyclonal to ADAM12 - Aminoterminal end
由来種	Rabbit
特異性	This antibody recognizes latent unprocessed and processed forms of ADAM12, but does not react with other ADAMs.
アプリケーション	<b>適用あり:</b> WB, ICC/IF, IHC-Fr, Flow Cyt
種交差性	<b>交差種:</b> Mouse, Rat, Human, Pig
免疫原	Synthetic peptide corresponding to Human ADAM12 (N terminal).
特記事項	<p>The Life Science industry has been in the grips of a reproducibility crisis for a number of years. Abcam is leading the way in addressing this with our range of recombinant monoclonal antibodies and knockout edited cell lines for gold-standard validation. Please check that this product meets your needs before purchasing.</p> <p>If you have any questions, special requirements or concerns, please send us an inquiry and/or contact our Support team ahead of purchase. Recommended alternatives for this product can be found below, along with publications, customer reviews and Q&amp;As</p>

### 製品の特性

製品の状態	Liquid
保存方法	Shipped at 4°C. Store at +4°C short term (1-2 weeks). Upon delivery aliquot. Store at -20°C long term.
バッファー	pH: 7.40 Preservative: 0.05% Sodium azide Constituents: 50% Glycerol, 2.9% Sodium chloride, PBS
精製度	Immunogen affinity purified
特記事項(精製)	The antibody has been peptide affinity purified.
ポリ/モノ	ポリクローナル
アイソタイプ	IgG

### アプリケーション

The Abpromise guarantee **Abpromise保証は、次のテスト済みアプリケーションにおけるab39155の使用に適用されず**

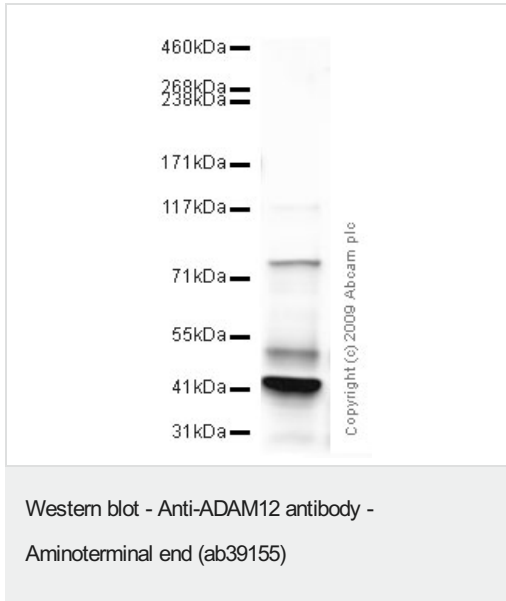
アプリケーションノートには、推奨の開始希釈率がありますが、適切な希釈率につきましてはご検討ください。

アプリケーション	Abreviews	特記事項
WB		1/1000 - 1/5000. Predicted molecular weight: 100 kDa. A recommended starting concentration for Western blots is 1/1000 when using colorimetric substrates such as BCIP/NBT and 1/5000 for chemiluminescent substrates. EDTA/EGTA treatment of tissues or lysates is required to see latent zymogen.
ICC/IF	★★★★★ (3)	Use at an assay dependent concentration.
IHC-Fr		Use at an assay dependent concentration. PubMed: 23671573
Flow Cyt		Use at an assay dependent concentration. PubMed: 19213876 <b>ab171870</b> - Rabbit polyclonal IgG, is suitable for use as an isotype control with this antibody.

## ターゲット情報

機能	Involved in skeletal muscle regeneration, specifically at the onset of cell fusion. Also involved in macrophage-derived giant cells (MGC) and osteoclast formation from mononuclear precursors.
組織特異性	Isoform 1 is expressed in placenta and skeletal, cardiac, and smooth muscle. Isoform 2 seems to be expressed only in placenta or in embryo and fetus. Both forms were expressed in some tumor cells lines. Not detected in brain, lung, liver, kidney or pancreas.
配列類似性	Contains 1 disintegrin domain. Contains 1 EGF-like domain. Contains 1 peptidase M12B domain.
ドメイン	The cysteine-rich domain supports cell adhesion through syndecans and triggers signaling events that lead to beta-1 integrin-dependent cell spreading. In carcinomas cells the binding of this domain to syndecans does not allow the integrin-mediated cell spreading. The conserved cysteine present in the cysteine-switch motif binds the catalytic zinc ion, thus inhibiting the enzyme. The dissociation of the cysteine from the zinc ion upon the activation-peptide release activates the enzyme.
翻訳後修飾	The precursor is cleaved by a furin endopeptidase.
細胞内局在	Secreted and Cell membrane.

## 画像



Anti-ADAM12 antibody - Aminoterminal end (ab39155) at 1/1000 dilution + Human heart tissue lysate - total protein (**ab29431**) at 10 µg

**Secondary**

Goat polyclonal to Rabbit IgG - H&L - Pre-Adsorbed (HRP) (**ab65484**) at 1/3000 dilution

**Predicted band size:** 100 kDa

**Observed band size:** 84 kDa

**Additional bands at:** 117 kDa, 42 kDa, 50 kDa. We are unsure as to the identity of these extra bands.

**Please note:** All products are "FOR RESEARCH USE ONLY. NOT FOR USE IN DIAGNOSTIC PROCEDURES"

**Our Abpromise to you: Quality guaranteed and expert technical support**

- Replacement or refund for products not performing as stated on the datasheet
- Valid for 12 months from date of delivery
- Response to your inquiry within 24 hours
- We provide support in Chinese, English, French, German, Japanese and Spanish
- Extensive multi-media technical resources to help you
- We investigate all quality concerns to ensure our products perform to the highest standards

If the product does not perform as described on this datasheet, we will offer a refund or replacement. For full details of the Abpromise, please visit <https://www.abcam.co.jp/abpromise> or contact our technical team.

**Terms and conditions**

- Guarantee only valid for products bought direct from Abcam or one of our authorized distributors