



Anti-ACTH antibody [AH26 + 57] - N-terminal ab199007

2 References [画像数 1](#)

製品の概要

製品名	Anti-ACTH antibody [AH26 + 57] - N-terminal
製品の詳細	Mouse monoclonal [AH26 + 57] to ACTH - N-terminal
由来種	Mouse
特異性	ab199007 is specific to Synacthen (aa1-24 of ACTH); does not react with CLIP (aa17-39 of ACTH).
アプリケーション	適用あり: IHC-P
種交差性	交差種: Human
免疫原	<p>This product was produced with the following immunogens:</p> <p>Synthetic peptide within Human ACTH aa 1 to the C-terminus (N terminal) conjugated to keyhole limpet haemocyanin. The exact immunogen sequence used to generate this antibody is proprietary information. If additional detail on the immunogen is needed to determine the suitability of the antibody for your needs, please <u>contact</u> our Scientific Support team to discuss your requirements. This sequence corresponds to amino acids 138-162 of the precursor POMC. (AH26)</p> <p>Database link: <u>P01189</u></p> <p>Recombinant fragment (N terminal). (57)</p> <p>Database link: <u>P01189</u></p> <div>  <u>Run BLAST with</u>  <u>Run BLAST with</u> </div>
ポジティブ・コントロール	IHC-P: Human pituitary gland.
特記事項	Please note that this antibody is an oligoclonal antibody. It is a cocktail of monoclonal antibodies that have been carefully selected. Oligoclonal antibodies have not only the specificity and batch-to-batch consistency of a monoclonal antibody, but also have the advantage of the sensitivity of a polyclonal antibody due to their ability to recognize multiple epitopes on an antigen.

製品の特性

製品の状態	Liquid
保存方法	Shipped at 4°C. Store at +4°C short term (1-2 weeks). Upon delivery aliquot. Store at -20°C long term. Avoid freeze / thaw cycle.
バッファー	pH: 7.2 Preservative: 0.05% Sodium azide

	Constituents: 99% PBS, 0.05% BSA
精製度	Protein A/G purified
ポリ/モノ	モノクローナル
クローン名	AH26 + 57
アイソタイプ	IgG1
軽鎖の種類	kappa

アプリケーション

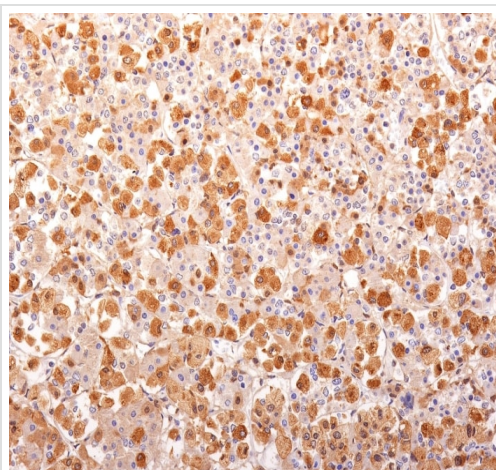
The Abpromise guarantee **Abpromise保証は、次のテスト済みアプリケーションにおけるab199007の使用に適用されます**
 アプリケーションノートには、推奨の開始希釈率がありますが、適切な希釈率につきましてはご確認ください。

アプリケーション	Abreviews	特記事項
IHC-P		Use a concentration of 1 - 2 µg/ml. Perform heat mediated antigen retrieval with Tris/EDTA buffer pH 9.0 before commencing with IHC staining protocol.

ターゲット情報

関連性	ACTH occurs in cells of the anterior pituitary and in neurons in brain. It regulates the corticosteroid production in the adrenal cortex. Beta endorphin and Met enkephalin are endogenous opiates. MSH (melanocyte stimulating hormone) increases the pigmentation of skin by increasing melanin production in melanocytes.
細胞内局在	Secreted

画像



Immunohistochemical analysis of Formalin-fixed, paraffin-embedded human Pituitary Gland labeling ACTH with ab199007 at 2µg/mL (30 minutes at RT) (Staining of formalin-fixed tissues requires heating tissue sections in 10mM Tris with 1mM EDTA, pH 9.0, for 45 min at 95°C followed by cooling at RT for 20 minutes).

Immunohistochemistry (Formalin/PFA-fixed paraffin-embedded sections) - Anti-ACTH antibody [AH26 + 57] - N-terminal (ab199007)

Please note: All products are "FOR RESEARCH USE ONLY. NOT FOR USE IN DIAGNOSTIC PROCEDURES"

Our Abpromise to you: Quality guaranteed and expert technical support

- Replacement or refund for products not performing as stated on the datasheet
- Valid for 12 months from date of delivery
- Response to your inquiry within 24 hours

- We provide support in Chinese, English, French, German, Japanese and Spanish
- Extensive multi-media technical resources to help you
- We investigate all quality concerns to ensure our products perform to the highest standards

If the product does not perform as described on this datasheet, we will offer a refund or replacement. For full details of the Abpromise, please visit <https://www.abcam.co.jp/abpromise> or contact our technical team.

Terms and conditions

- Guarantee only valid for products bought direct from Abcam or one of our authorized distributors