


### Anti-ACT antibody ab97396

1 References [画像数 2](#)

医薬用外劇物

#### 製品の概要

製品名	Anti-ACT antibody
製品の詳細	Rabbit polyclonal to ACT
由来種	Rabbit
アプリケーション	<b>適用あり:</b> WB, IHC-P
種交差性	<b>交差種:</b> Human <b>交差が予測される動物種:</b> Mouse, Rat, Cow 
免疫原	Recombinant protein fragment corresponding to a region within amino acids 1 and 196 of human ACT (NP_065228)
ポジティブ・コントロール	293T, A431, H1299, HeLaS3, HepG2, Molt-4 and Raji cells. SW480 xenograft.
特記事項	<p>The Life Science industry has been in the grips of a reproducibility crisis for a number of years. Abcam is leading the way in addressing this with our range of recombinant monoclonal antibodies and knockout edited cell lines for gold-standard validation. Please check that this product meets your needs before purchasing.</p> <p>If you have any questions, special requirements or concerns, please send us an inquiry and/or contact our Support team ahead of purchase. Recommended alternatives for this product can be found below, along with publications, customer reviews and Q&amp;As</p>

#### 製品の特性

製品の状態	Liquid
保存方法	Shipped at 4°C. Upon delivery aliquot. Store at -20°C or -80°C. Avoid freeze / thaw cycle.
バッファー	pH: 7.00 Preservative: 0.01% Thimerosal (merthiolate) Constituents: 1.21% Tris, 0.75% Glycine, 10% Glycerol (glycerin, glycerine)
精製度	Immunogen affinity purified
ポリ/モノ	ポリクローナル
アイソタイプ	IgG

## アプリケーション

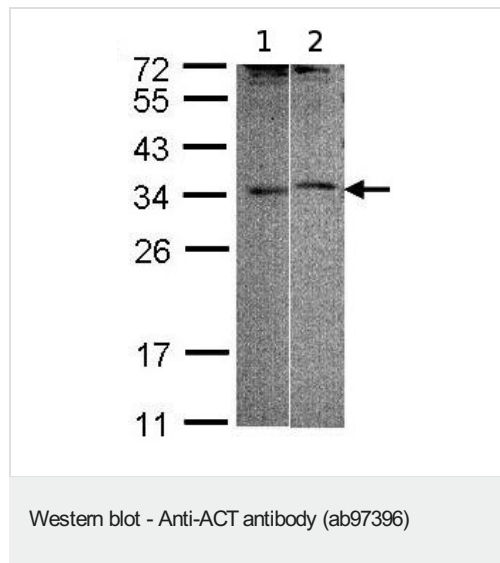
**The Abpromise guarantee**      Abpromise保証は、 次のテスト済みアプリケーションにおけるab97396の使用に適用されます  
アプリケーションノートには、推奨の開始希釈率がありますが、適切な希釈率につきましてはご確認ください。

アプリケーション	Abreviews	特記事項
WB		1/500 - 1/3000. Predicted molecular weight: 33 kDa.
IHC-P		1/100 - 1/500.

## ターゲット情報

機能	May be involved in the regulation of spermatogenesis. Stimulates CREM transcriptional activity in a phosphorylation-independent manner.
組織特異性	Testis-specific (at protein level).
配列類似性	Contains 4 LIM zinc-binding domains.
細胞内局在	Nucleus. Nuclei of round and elongated spermatids.

## 画像



**All lanes :** Anti-ACT antibody (ab97396) at 1/1000 dilution

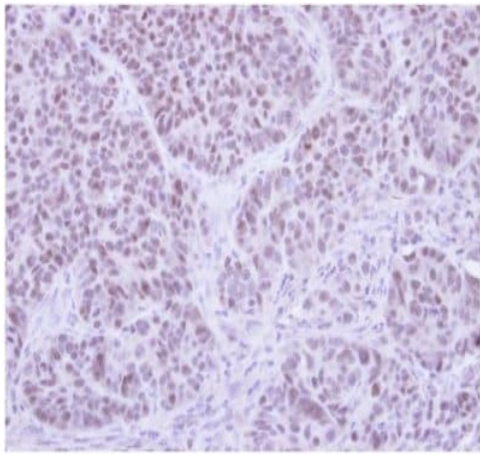
**Lane 1 :** 293T whole cell lysate

**Lane 2 :** Raji whole cell lysate

Lysates/proteins at 30 µg per lane.

**Predicted band size:** 33 kDa

Gel conc 12 % (SDS PAGE)



Immunohistochemistry (Formalin/PFA-fixed paraffin-embedded sections) - Anti-ACT antibody (ab97396)

ab97396 at 1/500 dilution, staining human ACT in SW480 xenograft  
- Formalin/PFA-fixed paraffin-embedded tissue.

**Please note:** All products are "FOR RESEARCH USE ONLY. NOT FOR USE IN DIAGNOSTIC PROCEDURES"

### Our Abpromise to you: Quality guaranteed and expert technical support

---

- Replacement or refund for products not performing as stated on the datasheet
- Valid for 12 months from date of delivery
- Response to your inquiry within 24 hours
- We provide support in Chinese, English, French, German, Japanese and Spanish
- Extensive multi-media technical resources to help you
- We investigate all quality concerns to ensure our products perform to the highest standards

If the product does not perform as described on this datasheet, we will offer a refund or replacement. For full details of the Abpromise, please visit <https://www.abcam.co.jp/abpromise> or contact our technical team.

### Terms and conditions

---

- Guarantee only valid for products bought direct from Abcam or one of our authorized distributors