

Anti-ABCG1 antibody [EP1366Y] ab52617

リコンビナント **RabMAb**

★★★★☆ **5 Abreviews** **76 References** 画像数 5

製品の概要

製品名	Anti-ABCG1 antibody [EP1366Y]
製品の詳細	Rabbit monoclonal [EP1366Y] to ABCG1
由来種	Rabbit
アプリケーション	適用あり: ICC/IF, WB 適用なし: IHC-P
種交差性	交差種: Mouse, Rat, Cow, Human
免疫原	Synthetic peptide within Human ABCG1 aa 150-250. The exact sequence is proprietary.
ポジティブ・コントロール	ICC/IF: HUVEC cell lysate.
特記事項	This product is a recombinant monoclonal antibody, which offers several advantages including: <ul style="list-style-type: none"> - High batch-to-batch consistency and reproducibility - Improved sensitivity and specificity - Long-term security of supply - Animal-free production For more information see here . Our RabMAb [®] technology is a patented hybridoma-based technology for making rabbit monoclonal antibodies. For details on our patents, please refer to RabMAb[®] patents .

製品の特性

製品の状態	Liquid
保存方法	Shipped at 4°C. Store at +4°C short term (1-2 weeks). Upon delivery aliquot. Store at -20°C. Avoid freeze / thaw cycle.
バッファー	pH: 7.20 Preservative: 0.01% Sodium azide Constituents: 59% PBS, 40% Glycerol, 0.05% BSA
精製度	Protein A purified
ポリ/モノ	モノクローナル
クローン名	EP1366Y
アイソタイプ	IgG

アプリケーション

The Abpromise guarantee Abpromise保証は、次のテスト済みアプリケーションにおけるab52617の使用に適用されます
アプリケーションノートには、推奨の開始希釈率がありますが、適切な希釈率につきましてはご確認ください。

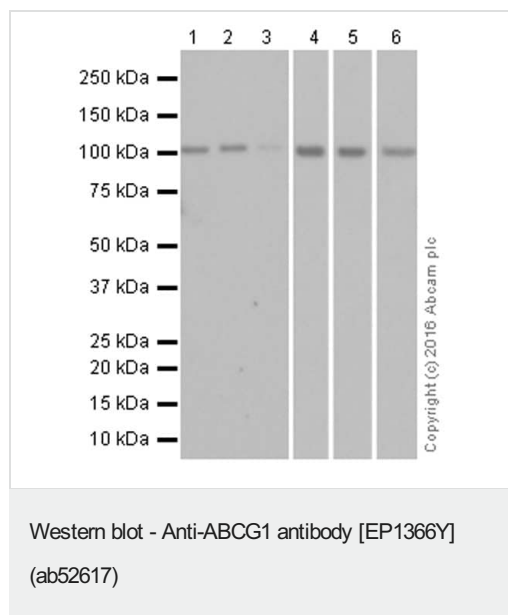
アプリケーション	Abreviews	特記事項
ICC/IF	★☆☆☆☆ (1)	1/100.
WB	★★★★★ (3)	1/1000 - 1/10000. Detects a band of approximately 110 kDa (predicted molecular weight: 75 kDa).

追加情報 Is unsuitable for IHC-P.

ターゲット情報

機能	Transporter involved in macrophage lipid homeostasis. Is an active component of the macrophage lipid export complex. Could also be involved in intracellular lipid transport processes. The role in cellular lipid homeostasis may not be limited to macrophages.
組織特異性	Expressed in several tissues. Expressed in macrophages; expression is increased in macrophages from patients with Tangier disease.
配列類似性	Belongs to the ABC transporter superfamily. ABCG family. Eye pigment precursor importer (TC 3.A.1.204) subfamily. Contains 1 ABC transmembrane type-2 domain. Contains 1 ABC transporter domain.
細胞内局在	Endoplasmic reticulum membrane. Golgi apparatus membrane. Predominantly localized in the intracellular compartments mainly associated with the endoplasmic reticulum (ER) and Golgi membranes.

画像



All lanes : Anti-ABCG1 antibody [EP1366Y] (ab52617) at 1/1000 dilution ((purified))

Lane 1 : Rat kidney lysate

Lane 2 : Rat liver lysate

Lane 3 : MDBK (Bovine kidney cell line) whole cell lysate

Lane 4 : HUVEC (Human umbilical vein endothelial cell line) whole cell lysate

Lane 5 : HepG2 (Human liver hepatocellular carcinoma cell line) whole cell lysate

Lane 6 : RAW 264.7 (Mouse macrophage cell line transformed with Abelson murine leukemia virus) whole cell lysate

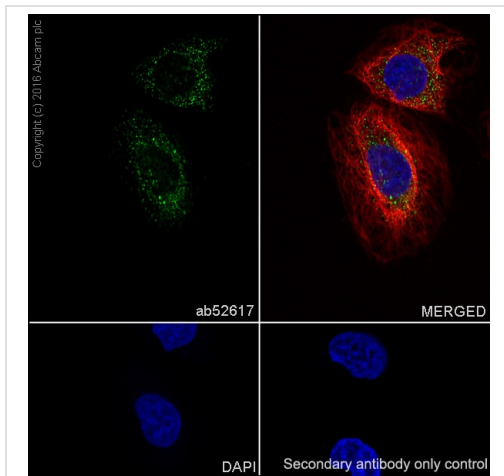
Lysates/proteins at 20 µg per lane.

Secondary

All lanes : Goat Anti-Rabbit IgG H&L (HRP) ([ab97051](#)) at 1/20000 dilution

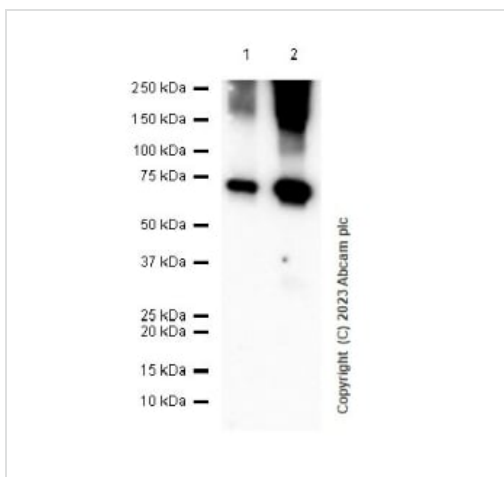
Predicted band size: 75 kDa

Blocking and diluting buffer: 5% NFDM /TBST



Immunocytochemistry/ Immunofluorescence - Anti-ABCG1 antibody [EP1366Y] (ab52617)

ab52617 staining ABCG1 in HUVEC (Human umbilical vein endothelial cell line) cells by ICC/IF (Immunocytochemistry/immunofluorescence). Cells were fixed with 4% Paraformaldehyde and permeabilized with 0.1% Triton X-100. Samples were incubated with primary antibody at a dilution of 1/100. A goat anti rabbit IgG (Alexa Fluor® 488) ([ab150077](#)) was used as the secondary antibody at a dilution of 1/1000. [ab195889](#) was used as a counterstain for primary antibody ab52617 at 1/200. DAPI was used as a nuclear counterstain and PBS as a negative control.



Western blot - Anti-ABCG1 antibody [EP1366Y] (ab52617)

Lane 1 : Anti-ABCG1 antibody [EP1366Y] (ab52617) at 1/1000 dilution

Lane 2 : Anti-DDDDK tag (Binds to FLAG® tag sequence) antibody [EPR20018-251] ([ab205606](#)) at 1/1000 dilution

All lanes : C-Myc/DDK-tagged full length human ABCG1 recombinant protein 10 ng

Secondary

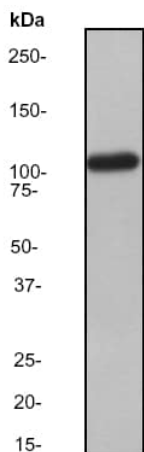
All lanes : Goat Anti-Rabbit IgG H&L (HRP) ([ab97051](#)) at 1/20000 dilution

Predicted band size: 75 kDa

Observed band size: 75 kDa

Exposure time: 180 seconds

Blocking/Dilution buffer: 5% NFDM/TBST



Western blot - Anti-ABCG1 antibody [EP1366Y] (ab52617)

Anti-ABCG1 antibody [EP1366Y] (ab52617) at 1/2000 dilution + HUVEC cell lysate at 10 µg

Secondary

Goat anti-rabbit HRP antibody at 1/2000 dilution

Predicted band size: 75 kDa

Observed band size: 110 kDa

Why choose a recombinant antibody?



Anti-ABCG1 antibody [EP1366Y] (ab52617)

Please note: All products are "FOR RESEARCH USE ONLY. NOT FOR USE IN DIAGNOSTIC PROCEDURES"

Our Abpromise to you: Quality guaranteed and expert technical support

- Replacement or refund for products not performing as stated on the datasheet
- Valid for 12 months from date of delivery
- Response to your inquiry within 24 hours
- We provide support in Chinese, English, French, German, Japanese and Spanish
- Extensive multi-media technical resources to help you
- We investigate all quality concerns to ensure our products perform to the highest standards

If the product does not perform as described on this datasheet, we will offer a refund or replacement. For full details of the Abpromise,

please visit <https://www.abcam.co.jp/abpromise> or contact our technical team.

Terms and conditions

- Guarantee only valid for products bought direct from Abcam or one of our authorized distributors