




# Anti-ABCB11/BSEP antibody ab217532

**2 References** [画像数 2](#)

### 製品の概要

製品名	Anti-ABCB11/BSEP antibody
製品の詳細	Rabbit polyclonal to ABCB11/BSEP
由来種	Rabbit
アプリケーション	<b>適用あり:</b> IHC-P
種交差性	<b>交差種:</b> Rat, Human <b>交差が予測される動物種:</b> Mouse 
免疫原	<p>Synthetic peptide within Mouse ABCB11/BSEP aa 1-100 conjugated to keyhole limpet haemocyanin. The exact immunogen sequence used to generate this antibody is proprietary information. If additional detail on the immunogen is needed to determine the suitability of the antibody for your needs, please <b>contact</b> our Scientific Support team to discuss your requirements.</p> <p>Database link: <a href="#">Q9QY30</a></p> <p> <a href="#">Run BLAST with</a>  <a href="#">Run BLAST with</a></p>
ポジティブ・コントロール	Rat pancreatic and human liver carcinoma tissues.
特記事項	<p>The Life Science industry has been in the grips of a reproducibility crisis for a number of years. Abcam is leading the way in addressing this with our range of recombinant monoclonal antibodies and knockout edited cell lines for gold-standard validation. Please check that this product meets your needs before purchasing.</p> <p>If you have any questions, special requirements or concerns, please send us an inquiry and/or contact our Support team ahead of purchase. Recommended alternatives for this product can be found below, along with publications, customer reviews and Q&amp;As</p>

### 製品の特性

製品の状態	Liquid
保存方法	Shipped at 4°C. Store at +4°C short term (1-2 weeks). Upon delivery aliquot. Store at -20°C long term. Avoid freeze / thaw cycle.
バッファー	<p>pH: 7.40</p> <p>Preservative: 0.02% Proclin 300</p> <p>Constituents: 50% Glycerol (glycerin, glycerine), 1% BSA, 48.98% TBS, 1X</p>
精製度	Protein A purified

ポリ/モノ  
アイソタイプ

ポリクローナル  
IgG

#### アプリケーション

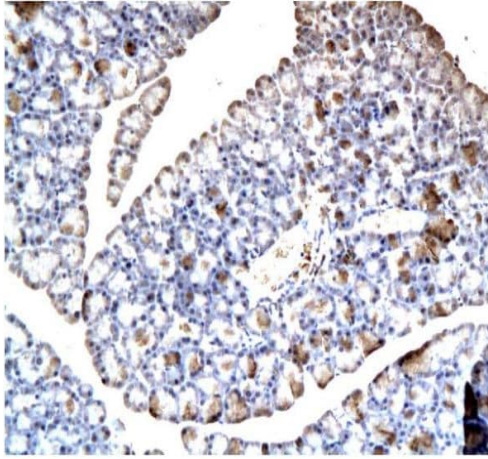
**The Abpromise guarantee**      **Abpromise保証は、** 次のテスト済みアプリケーションにおけるab217532の使用に適用されます  
アプリケーションノートには、推奨の開始希釈率がありますが、適切な希釈率につきましてはご確認ください。

アプリケーション	Abreviews	特記事項
IHC-P		1/100 - 1/500.

#### ターゲット情報

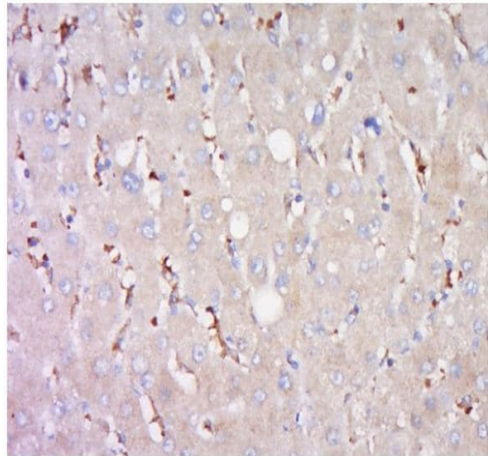
機能	Involved in the ATP-dependent secretion of bile salts into the canaliculus of hepatocytes.
組織特異性	Expressed predominantly, if not exclusively in the liver, where it was further localized to the canalicular microvilli and to subcanalicular vesicles of the hepatocytes by in situ.
関連疾患	<p>Defects in ABCB11 are the cause of progressive familial intrahepatic cholestasis type 2 (PFIC2) [MIM:601847]. PFIC2 is an inherited liver disease of childhood which is characterized by cholestasis and normal serum gamma-glutamyltransferase activity. Defects in ABCB11 are also found in cases of chronic intrahepatic cholestasis without obvious familial history of chronic liver disease.</p> <p>Defects in ABCB11 are the cause of benign recurrent intrahepatic cholestasis type 2 (BRIC2) [MIM:605479]. BRIC is characterized by intermittent episodes of cholestasis without progression to liver failure. There is initial elevation of serum bile acids, followed by cholestatic jaundice which generally spontaneously resolves after periods of weeks to months. The cholestatic attacks vary in severity and duration and patients are asymptomatic between episodes, both clinically and biochemically.</p>
配列類似性	<p>Belongs to the ABC transporter superfamily. ABCB family. Multidrug resistance exporter (TC 3.A.1.201) subfamily.</p> <p>Contains 2 ABC transmembrane type-1 domains.</p> <p>Contains 2 ABC transporter domains.</p>
ドメイン	Multifunctional polypeptide with two homologous halves, each containing an hydrophobic membrane-anchoring domain and an ATP binding cassette (ABC) domain.
細胞内局在	Membrane.

#### 画像



Immunohistochemistry (Formalin/PFA-fixed paraffin-embedded sections) - Anti-ABCB11/BSEP antibody (ab217532)

Immunohistochemical analysis of formalin-fixed, paraffin-embedded rat pancreatic tissue labeling ABCB11/BSEP with ab217532 at 1/200 dilution, followed by conjugation to the secondary antibody and DAB staining.



Immunohistochemistry (Formalin/PFA-fixed paraffin-embedded sections) - Anti-ABCB11/BSEP antibody (ab217532)

Immunohistochemical analysis of paraformaldehyde-fixed, paraffin-embedded human liver carcinoma tissue labeling ABCB11/BSEP with ab217532 at 1/500 dilution overnight at 4°C, followed by a conjugated secondary antibody for 90 minutes and DAB staining.

Antigen retrieval by boiling in sodium citrate buffer (pH 6) for 15 minutes; Block endogenous peroxidase by 3% hydrogen peroxide for 30 minutes; Blocking buffer (normal goat serum) at 37°C for 20 minutes.

**Please note:** All products are "FOR RESEARCH USE ONLY. NOT FOR USE IN DIAGNOSTIC PROCEDURES"

### Our Abpromise to you: Quality guaranteed and expert technical support

- Replacement or refund for products not performing as stated on the datasheet

- Valid for 12 months from date of delivery
- Response to your inquiry within 24 hours
- We provide support in Chinese, English, French, German, Japanese and Spanish
- Extensive multi-media technical resources to help you
- We investigate all quality concerns to ensure our products perform to the highest standards

If the product does not perform as described on this datasheet, we will offer a refund or replacement. For full details of the Abpromise, please visit <https://www.abcam.co.jp/abpromise> or contact our technical team.

#### **Terms and conditions**

---

- Guarantee only valid for products bought direct from Abcam or one of our authorized distributors