

Anti-ABCA1 antibody [AB.H10] ab18180

KO 評価済

★★★★☆ 18 Abreviews 188 References 画像数 4

製品の概要

製品名	Anti-ABCA1 antibody [AB.H10]
製品の詳細	Mouse monoclonal [AB.H10] to ABCA1
由来種	Mouse
アプリケーション	適用あり: IHC-P, Flow Cyt, WB
種交差性	交差種: Mouse, Human
免疫原	Recombinant fragment corresponding to Human ABCA1 aa 1800-2260. Database link: O95477
ポジティブ・コントロール	testis, liver, and brain tissue (negative control: muscle tissue)
特記事項	<p>This product was changed from ascites to tissue culture supernatant on 5th February 2018. Please note that the dilutions may need to be adjusted accordingly. If you have any questions, please do not hesitate to contact our scientific support team.</p> <p>The Life Science industry has been in the grips of a reproducibility crisis for a number of years. Abcam is leading the way in addressing this with our range of recombinant monoclonal antibodies and knockout edited cell lines for gold-standard validation. Please check that this product meets your needs before purchasing.</p> <p>If you have any questions, special requirements or concerns, please send us an inquiry and/or contact our Support team ahead of purchase. Recommended alternatives for this product can be found below, along with publications, customer reviews and Q&As</p>

製品の特性

製品の状態	Liquid
保存方法	Shipped at 4°C. Store at +4°C short term (1-2 weeks). Upon delivery aliquot. Store at -20°C or -80°C. Avoid freeze / thaw cycle.
バッファー	pH: 7.20 Preservative: 0.05% Sodium azide Constituent: PBS
精製度	Protein A purified
特記事項 (精製)	Protein A purified from TCS

ポリ/モノ	モノクローナル
クローン名	AB.H10
アイソタイプ	IgG1

アプリケーション

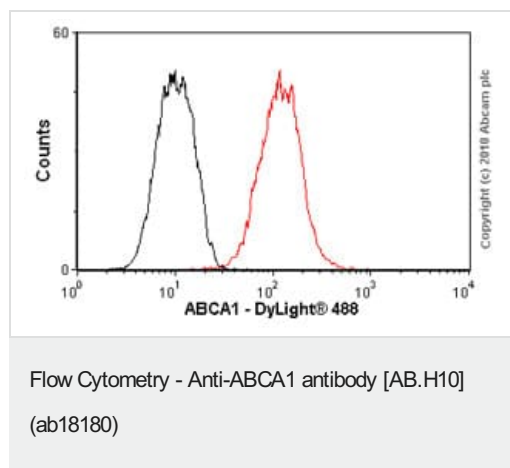
The Abpromise guarantee Abpromise保証は、次のテスト済みアプリケーションにおけるab18180の使用に適用されます
 アプリケーションノートには、推奨の開始希釈率がありますが、適切な希釈率につきましてはご検討ください。

アプリケーション	Abreviews	特記事項
IHC-P		1/200. Perform heat mediated antigen retrieval before commencing with IHC staining protocol.
Flow Cyt	★★★★★ (3)	Use 1-2µg for 10 ⁶ cells. ab170190 - Mouse monoclonal IgG1, is suitable for use as an isotype control with this antibody.
WB	★★★★★ (13)	1/200 - 1/500. Predicted molecular weight: 254 kDa. Abcam recommends using BSA as the blocking agent and 80-100 ug of lysate.

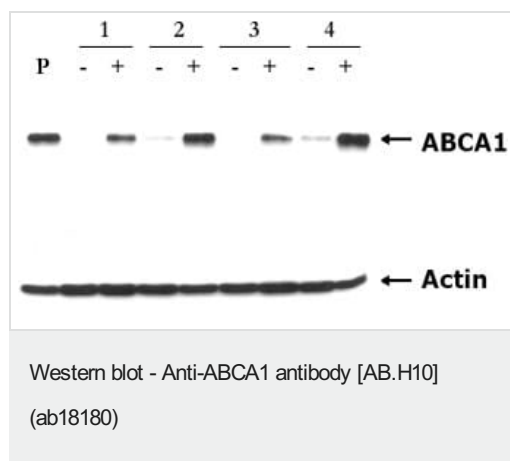
ターゲット情報

機能	cAMP-dependent and sulfonylurea-sensitive anion transporter. Key gatekeeper influencing intracellular cholesterol transport.
組織特異性	Widely expressed, but most abundant in macrophages.
関連疾患	Defects in ABCA1 are a cause of high density lipoprotein deficiency type 1 (HDLD1) [MIM:205400]; also known as analphalipoproteinemia or Tangier disease (TGD). HDLD1 is a recessive disorder characterized by absence of high density lipoprotein (HDL) cholesterol from plasma, accumulation of cholesteryl esters, premature coronary artery disease (CAD), hepatosplenomegaly, recurrent peripheral neuropathy and progressive muscle wasting and weakness. Defects in ABCA1 are a cause of high density lipoprotein deficiency type 2 (HDLD2) [MIM:604091]; also known as familial hypoalphalipoproteinemia (FHA). HDLD2 is inherited as autosomal dominant trait. It is characterized by moderately low HDL cholesterol, predilection toward premature coronary artery disease (CAD) and a reduction in cellular cholesterol efflux.
配列類似性	Belongs to the ABC transporter superfamily. ABCA family. Contains 2 ABC transporter domains.
ドメイン	Multifunctional polypeptide with two homologous halves, each containing an hydrophobic membrane-anchoring domain and an ATP binding cassette (ABC) domain.
翻訳後修飾	Phosphorylation on Ser-2054 regulates phospholipid efflux. Palmitoylation by DHHC8 is essential for membrane localization.
細胞内局在	Membrane.

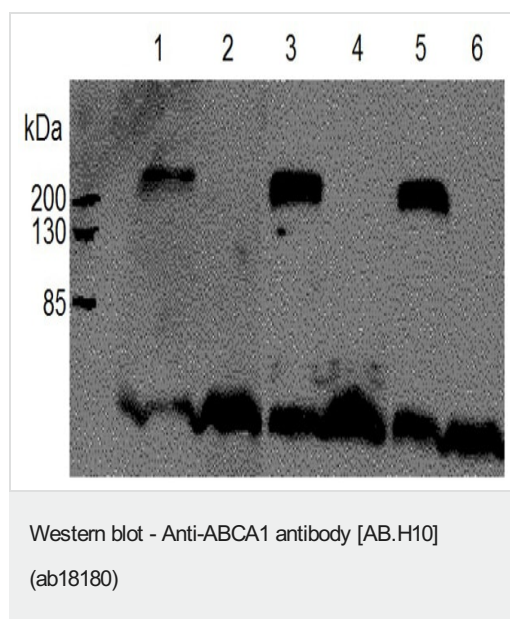
画像



Overlay histogram showing HepG2 cells stained with ab18180 (red line). The cells were fixed with methanol (5 min) and then permeabilized with 0.1% PBS-Tween for 20 min. The cells were then incubated in 1x PBS / 10% normal goat serum / 0.3M glycine to block non-specific protein-protein interactions followed by the antibody (ab18180, 2µg/1x10⁶ cells) for 30 min at 22°C. The secondary antibody used was DyLight® 488 goat anti-mouse IgG (H+L) ([ab96879](#)) at 1/500 dilution for 30 min at 22°C. Isotype control antibody (black line) was mouse IgG1 [ICIGG1] ([ab91353](#), 2µg/1x10⁶ cells) used under the same conditions. Acquisition of >5,000 events was performed. This antibody gave a positive signal in HepG2 cells fixed with 4% paraformaldehyde/permeabilized in 0.1% PBS-Tween used under the same conditions.



Western blot analysis of ABCA1 induction by cholesterol (+) in human fibroblast cells from different patients (1,2,3,4). Simultaneous blotting with anti-actin antibody was used for protein loading control. Western blot analysis of ABCA1 induction by cholesterol (+) in human fibroblast cells from different patients (1,2,3,4). Simultaneous blotting with anti-actin antibody was used for protein loading control.



All lanes : Anti-ABCA1 antibody [AB.H10] (ab18180) at 1/1000 dilution

Lanes 1 & 3 & 5 : Wild type mouse liver tissue lysate

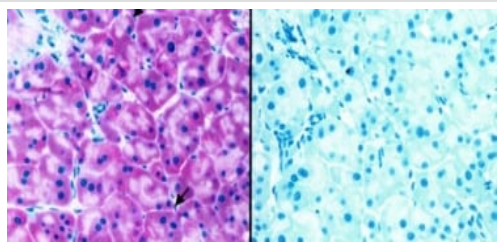
Lanes 2 & 4 & 6 : Knockout mouse liver tissue lysate

Lysates/proteins at 100 µg per lane.

Predicted band size: 254 kDa

Observed band size: 254 kDa

The lower bands are from the secondary anti-mouse antibody reacting to the endogenous mouse antibodies from the tissue.



Immunohistochemistry (Formalin/PFA-fixed paraffin-embedded sections) - Anti-ABCA1 antibody [AB.H10] (ab18180)

Immunoreactivity of pancreas tissue for ABCA1 protein. Left panel: strong immunopositivity of exocrine glandular cells of the pancreas, especially in the basal region (arrows). Interstitial microvascular cells are apparently negative. Cells within the islet were weakly positive (data not shown). Right panel: the negative control. Hematoxylin counterstain.

Please note: All products are "FOR RESEARCH USE ONLY. NOT FOR USE IN DIAGNOSTIC PROCEDURES"

Our Abpromise to you: Quality guaranteed and expert technical support

- Replacement or refund for products not performing as stated on the datasheet
- Valid for 12 months from date of delivery
- Response to your inquiry within 24 hours
- We provide support in Chinese, English, French, German, Japanese and Spanish
- Extensive multi-media technical resources to help you
- We investigate all quality concerns to ensure our products perform to the highest standards

If the product does not perform as described on this datasheet, we will offer a refund or replacement. For full details of the Abpromise, please visit <https://www.abcam.co.jp/abpromise> or contact our technical team.

Terms and conditions

- Guarantee only valid for products bought direct from Abcam or one of our authorized distributors