

Anti-53BP1 antibody ab36823

★★★★☆ **12 Abreviews** **134 References** 画像数 4

製品の概要

製品名	Anti-53BP1 antibody
製品の詳細	Rabbit polyclonal to 53BP1
由来種	Rabbit
アプリケーション	適用あり: WB, IHC-P, IP
種交差性	交差種: Mouse, Human
免疫原	Synthetic peptide corresponding to Human 53BP1 aa 350-450. Database link: Q12888
ポジティブ・コントロール	IHC-P: Human prostate cancer tissue, mouse renal cancer tissue. WB: HeLa and mouse TCMK1 cell nuclear extract. IP: HEK293T whole cell lysate.
特記事項	<p>The Life Science industry has been in the grips of a reproducibility crisis for a number of years. Abcam is leading the way in addressing this with our range of recombinant monoclonal antibodies and knockout edited cell lines for gold-standard validation. Please check that this product meets your needs before purchasing.</p> <p>If you have any questions, special requirements or concerns, please send us an inquiry and/or contact our Support team ahead of purchase. Recommended alternatives for this product can be found below, along with publications, customer reviews and Q&As</p>

製品の特性

製品の状態	Liquid
保存方法	Shipped at 4°C. Upon delivery aliquot and store at -20°C. Avoid freeze / thaw cycles.
バッファー	pH: 7.00 Preservative: 0.09% Sodium azide Constituent: Tris citrate/phosphate
精製度	Immunogen affinity purified
ポリ/モノ	ポリクローナル
アイソタイプ	IgG

アプリケーション

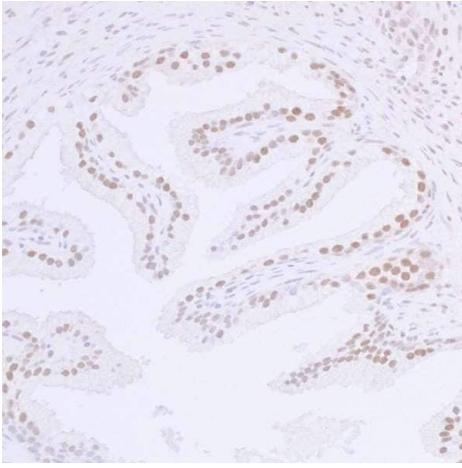
The Abpromise guarantee Abpromise保証は、次のテスト済みアプリケーションにおけるab36823の使用に適用されます
アプリケーションノートには、推奨の開始希釈率がありますが、適切な希釈率につきましてはご検討ください。

アプリケーション	Abreviews	特記事項
WB	★★★★★ (4)	1/10000 - 1/25000. Detects a band of approximately 220 kDa (predicted molecular weight: 214 kDa).
IHC-P	★★★★★ (1)	1/1000 - 1/5000. Perform heat mediated antigen retrieval with citrate buffer pH 6 before commencing with IHC staining protocol.
IP		Use at an assay dependent concentration.

ターゲット情報

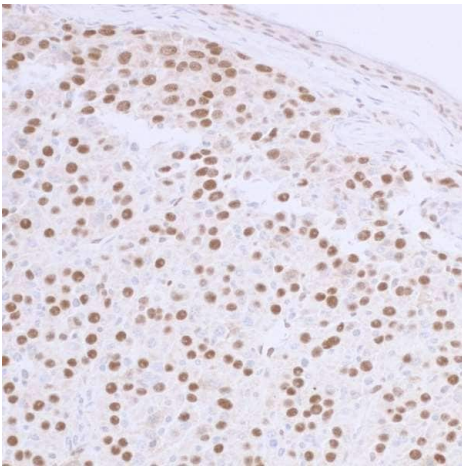
機能	May have a role in checkpoint signaling during mitosis. Enhances TP53-mediated transcriptional activation. Plays a role in the response to DNA damage.
関連疾患	Note=A chromosomal aberration involving TP53BP1 is found in a form of myeloproliferative disorder chronic with eosinophilia. Translocation t(5;15)(q33;q22) with PDGFRB creating a TP53BP1-PDGFRB fusion protein.
配列類似性	Contains 2 BRCT domains.
翻訳後修飾	Asymmetrically dimethylated on Arg residues by PRMT1. Methylation is required for DNA binding. Phosphorylated at basal level in the absence of DNA damage. Hyper-phosphorylated in an ATM-dependent manner in response to DNA damage induced by ionizing radiation. Hyper-phosphorylated in an ATR-dependent manner in response to DNA damage induced by UV irradiation.
細胞内局在	Nucleus. Chromosome > centromere > kinetochore. Associated with kinetochores. Both nuclear and cytoplasmic in some cells. Recruited to sites of DNA damage, such as double strand breaks. Methylation of histone H4 at 'Lys-20' is required for efficient localization to double strand breaks.

画像



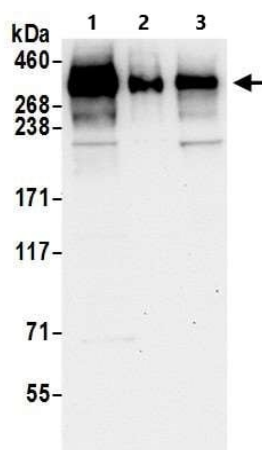
Immunohistochemical analysis of formalin-fixed, paraffin-embedded human prostate cancer tissue, labeling CTCF with ab36823 at a 1/5000 dilution. Detection: DAB.

Immunohistochemistry (Formalin/PFA-fixed paraffin-embedded sections) - Anti-53BP1 antibody (ab36823)



Immunohistochemical analysis of formalin-fixed, paraffin-embedded mouse renal cancer tissue, labeling CTCF with ab36823 at a 1/1000 dilution. Detection: DAB.

Immunohistochemistry (Formalin/PFA-fixed paraffin-embedded sections) - Anti-53BP1 antibody (ab36823)



All lanes : Anti-53BP1 antibody (ab36823) at 0.04 µg/ml

Lane 1 : HeLa cell nuclear extract at 50 µg

Lane 2 : HeLa cell nuclear extract at 5 µg

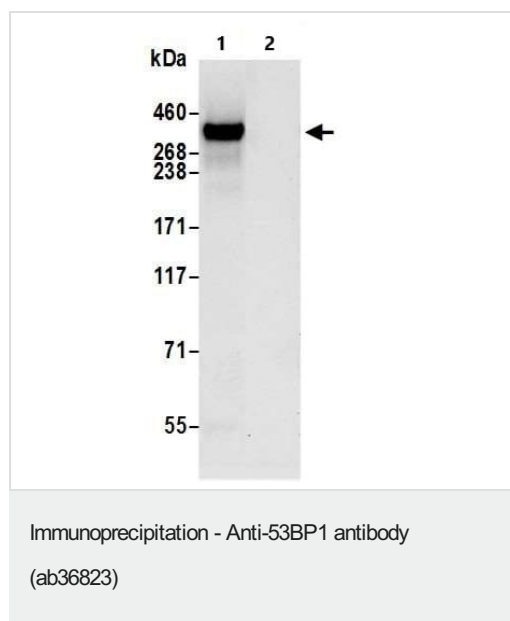
Lane 3 : TCMK1 mouse cell nuclear extract at 15 µg

Predicted band size: 214 kDa

Exposure time: 30 seconds

Detection: Chemiluminescence.

Western blot - Anti-53BP1 antibody (ab36823)



53BP1 was immunoprecipitated from 1 mg HEK293T whole cell lysate with ab36823 at 6 µg per reaction. Western blot was performed on the immunoprecipitate using **ab243868** at a 1/1000 dilution.

Lane 1: ab36823 IP in HEK293T whole cell lysate.

Lane 2: Control IgG in HEK293T whole cell lysate.

Detection: Chemiluminescence.

Exposure time: 10 seconds.

Please note: All products are "FOR RESEARCH USE ONLY. NOT FOR USE IN DIAGNOSTIC PROCEDURES"

Our Abpromise to you: Quality guaranteed and expert technical support

- Replacement or refund for products not performing as stated on the datasheet
- Valid for 12 months from date of delivery
- Response to your inquiry within 24 hours
- We provide support in Chinese, English, French, German, Japanese and Spanish
- Extensive multi-media technical resources to help you
- We investigate all quality concerns to ensure our products perform to the highest standards

If the product does not perform as described on this datasheet, we will offer a refund or replacement. For full details of the Abpromise, please visit <https://www.abcam.co.jp/abpromise> or contact our technical team.

Terms and conditions

- Guarantee only valid for products bought direct from Abcam or one of our authorized distributors