

MitoBiogenesis™ Western Blot Cocktail ab123545

★☆☆☆☆ [1 Abreviews](#) [10 References](#) [画像数 2](#)

製品の概要

製品名	MitoBiogenesis™ Western Blot Cocktail
種交差性	交差種: Mouse, Rat, Cow, Human
製品の概要	<p>The MitoBiogenesis™ western blotting cocktail (ab123545) is designed to study the regulation of mitochondrial biogenesis and cellular stress in response to environmental stimuli. It also can be used to monitor drug-induced effects on mitochondrial biogenesis. The two main components of this cocktail target two proteins, which are each subunits of a different oxidative phosphorylation enzyme complex, one subunit I of Complex IV (COX-I), which is mtDNA-encoded, and the 70kDa subunit of Complex II (SDH-A), which is nDNA-encoded. Complex IV includes several proteins which are encoded in the mitochondrion, while the proteins of Complex II are entirely encoded in the nucleus. An anti-Beta actin antibody is used as loading control.</p> <p>Cocktail Antibodies:</p> <p>Mouse CII-70 (SDHA) [2E3GC12FB2AE2] monoclonal:</p> <p>Amount: 25 µg</p> <p>Working concentration: 0.5 µg/ml</p> <p>Mouse CIV-1 (MT-CO1) [1D6E1A8] monoclonal:</p> <p>Amount: 50 µg</p> <p>Working concentration: 1 µg/ml</p> <p>Mouse Beta actin [mAbcam 8224] monoclonal:</p> <p>Amount: 25 µg</p> <p>Working concentration: 0.5 µg/ml</p>

特記事項

Antibody Purity: Near homogeneity as judged by SDS-PAGE. The antibodies were produced in vitro using hybridomas grown in serum-free medium, and then purified by biochemical fractionation.

Related products

Review the [mitochondrial assay guide](#), or the full [metabolism assay guide](#) to learn about more assays for metabolites, metabolic enzymes, mitochondrial function, and oxidative stress, and also how to assay metabolic function in live cells using your plate reader.

アプリケーション

適用あり: WB

製品の特性

保存方法

Store at +4°C. Please refer to protocols.

内容	100 µg
Antibody Cocktail	1 x 200µl

アプリケーション

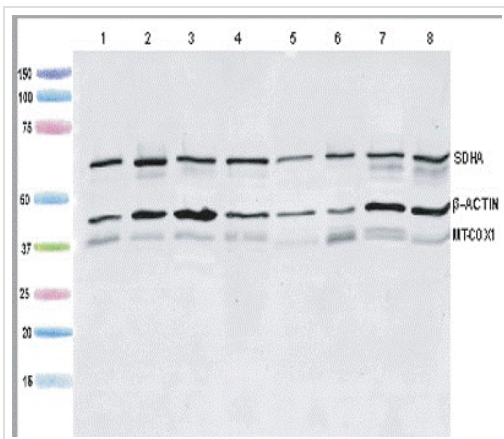
The Abpromise guarantee

Abpromise保証は、次のテスト済みアプリケーションにおけるab123545の使用に適用されます

アプリケーションノートには、推奨の開始希釈率がありますが、適切な希釈率につきましてはご検討ください。

アプリケーション	Abreviews	特記事項
WB		<p>Use at an assay dependent concentration. The antibody cocktail should be diluted 250 X to a final working concentration of 2µg/mL for western blotting.</p> <p>COXI is a highly hydrophobic protein and appears as a broad band at ~35 kDa (not at its true molecular weight at 57 kDa). It is very sensitive to heating. Therefore, the samples, including the positive control, should not be heated over 50°C before loaded</p>

画像



Western blot - Biogenesis Western Blot Cocktail
(ab123545)

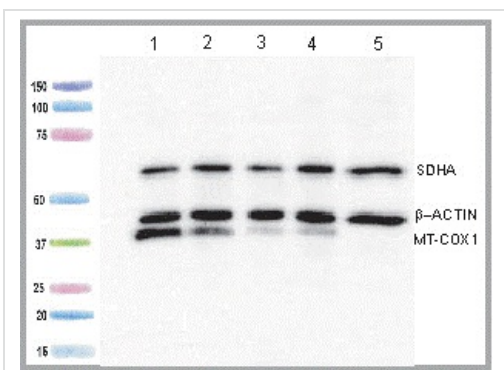
All lanes : MitoBiogenesis™ Western Blot Cocktail (ab123545) at 1/250 dilution

- Lane 1** : Human HepG2 cell lysate
- Lane 2** : Human Hela cell lysate
- Lane 3** : Human HDFn cell lysate
- Lane 4** : Human SH-SY5Y cell lysate
- Lane 5** : Rat H9C2 cell lysate
- Lane 6** : Rat H4IIE cell lysate
- Lane 7** : Mouse 3T3 cell lysate
- Lane 8** : Mouse MEF cell lysate

Lysates/proteins at 15 µg per lane.

Secondary

All lanes : GAM-HRP at 1/3000 dilution



Western blot - Biogenesis Western Blot Cocktail
(ab123545)

All lanes : MitoBiogenesis™ Western Blot Cocktail (ab123545) at 1/250 dilution

- Lane 1** : Human HepG2 cell lysate (vehicle treated)
- Lane 2** : Human HepG2 cell lysate (Chloramphenicol treated)
- Lane 3** : Human HepG2 cell lysate (DDC treated)
- Lane 4** : Human 143B WT cell lysate
- Lane 5** : Human 143B p0 cell lysate

Lysates/proteins at 15 µg per lane.

Secondary

All lanes : GAM-HRP at 1/3000 dilution

Please note: All products are "FOR RESEARCH USE ONLY. NOT FOR USE IN DIAGNOSTIC PROCEDURES"

Our Abpromise to you: Quality guaranteed and expert technical support

- Replacement or refund for products not performing as stated on the datasheet
- Valid for 12 months from date of delivery
- Response to your inquiry within 24 hours
- We provide support in Chinese, English, French, German, Japanese and Spanish
- Extensive multi-media technical resources to help you
- We investigate all quality concerns to ensure our products perform to the highest standards

If the product does not perform as described on this datasheet, we will offer a refund or replacement. For full details of the Abpromise, please visit <https://www.abcam.co.jp/abpromise> or contact our technical team.

Terms and conditions

- Guarantee only valid for products bought direct from Abcam or one of our authorized distributors