

Cytochrome c Apoptosis WB Antibody Cocktail ab110415

[9 References](#) [画像数 1](#)

製品の概要

製品名	Cytochrome c Apoptosis WB Antibody Cocktail
アッセイタイプ	Quantitative
種交差性	交差種: Human
製品の概要	The permeabilization of mitochondrial outer membrane and the subsequent release of cytochrome c and other apoptogenic proteins from mitochondrial intermembrane space into the cytoplasm is considered a hallmark of many apoptotic pathways. Therefore assaying these proteins in mitochondrial and cytoplasmic fractions is of prime interest for many researchers.

ab 110415 (MSA12) is a Western blot antibody cocktail that allows for the detection of cytochrome c in cytoplasmic and mitochondria-containing fractions for determining the proportion of released cytochrome c from mitochondria to the cytoplasm from apoptosis. The kit includes antibodies against a cytoplasmic protein marker, glyceraldehyde-3-phosphodehydrogenase (GAPDH), and 2 mitochondrial markers, pyruvate dehydrogenase subunit E1-alpha (a matrix marker), and ATP synthase subunit alpha (an inner membrane marker). This set of control markers allows for the monitoring and/or optimization of the permeabilization conditions.

Cocktail Antibodies:

Mouse anti Cyt. c monoclonal:

Amount: 50 µg
Working concentration: 1 µg/ml

Mouse anti GAPDH monclonal:

Amount: 5ug
Working concentration: 0.1 µg/ml

Mouse anti PDH-E1-alpha monoclonal:

Amount: 100ug
Working concentration: 2 µg/ml

Mouse anti C-V-alpha monoclonal:

Amount: 25ug
Working concentration: 0.5 µg/ml

特記事項

This product was previously called ApoTrack™ Cytochrome c Apoptosis WB Antibody Cocktail

Other apoptosis assays

For more apoptosis assays, review the [apoptosis assay and apoptosis marker guide](#).

アプリケーション

適用あり: WB

製品の特性

保存方法

Please refer to protocols.

内容	180 µg
HeLa Lysate Control	1 x 50µg
Pre-mixed Solution of 4 monoclonal Antibodies	1 x 180µg

アプリケーション

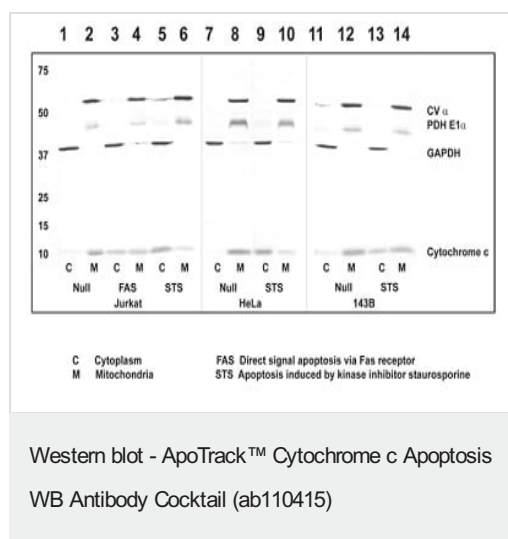
The Abpromise guarantee

Abpromise保証は、次のテスト済みアプリケーションにおけるab110415の使用に適用されます

アプリケーションノートには、推奨の開始希釈率がありますが、適切な希釈率につきましてはご検討ください。

アプリケーション	Abreviews	特記事項
WB		Use a concentration of 3.6 µg/ml. The antibody cocktail (0.9 mg/ml) should be diluted 250x to a final working concentration of 3.6 µg/ml for Western blotting.

画像



In this experiment, apoptosis was induced in Jurkat and 143B osteosarcoma cells by FAS and also by treatment with staurosporine (HeLa cells were also treated, but only with STS). Mitochondrial and cytoplasmic fractions were isolated (using kit Cell Fractionation Kit [ab109719/MS861](#)) and probed using ab110415 (MSA12). As is clear from the gels, cytochrome c has translocated partially in FAS-induced cells and STS-treated osteosarcoma cells, and almost completely in STS-treated Jurkat and HeLa cells. The three control targets allow for verification of the "cleanness" of the cell fractionation.

Please note: All products are "FOR RESEARCH USE ONLY. NOT FOR USE IN DIAGNOSTIC PROCEDURES"

Our Abpromise to you: Quality guaranteed and expert technical support

- Replacement or refund for products not performing as stated on the datasheet
- Valid for 12 months from date of delivery
- Response to your inquiry within 24 hours

- We provide support in Chinese, English, French, German, Japanese and Spanish
- Extensive multi-media technical resources to help you
- We investigate all quality concerns to ensure our products perform to the highest standards

If the product does not perform as described on this datasheet, we will offer a refund or replacement. For full details of the Abpromise, please visit <https://www.abcam.co.jp/abpromise> or contact our technical team.

Terms and conditions

- Guarantee only valid for products bought direct from Abcam or one of our authorized distributors