

Mouse Von Willebrand Factor A2 Matched Antibody Pair Kit ab213466

リコンビナント

画像数 2

製品の概要

製品名	Mouse Von Willebrand Factor A2 Matched Antibody Pair Kit
検出方法	Colorimetric
アッセイタイプ	ELISA set
検出感度	5.7 pg/ml
検出範囲	62.5 pg/ml - 4000 pg/ml
種交差性	交差種: Mouse
製品の概要	<p>Mouse Von Willebrand Factor 2 Matched Antibody Pair Kits include a capture and a biotinylated detector antibody pair, along with a calibrated protein standard, suitable for sandwich ELISA. The Matched Antibody Pair Kit can be used to quantify native and recombinant mouse Von Willebrand Factor 2.</p> <p>Optimization of the kit reagents to sample type, immunoassay format or instrumentation may be required. Guidelines for use of this kit in a standard 96-well microplate sandwich ELISA using HRP/TMB system of colorimetric detection is described in this assay procedure for the purposes of quantification.</p> <p>Protocol information and tips on the use of the Matched Antibody Pair kits for sandwich ELISA can be found on our website. An accessory pack can be purchased which includes buffer reagents required to perform 10 x 96-well plate sandwich ELISAs (ab210905).</p> <p>For additional information on the performance of the antibody pair used in this kit, please see our equivalent SimpleStep ELISA kit ab208980. Please note that while the antibody pair is the same provided in the corresponding SimpleStep ELISA Kit, due to differences in their formulation, this antibody pair cannot be used with the consumables provided with our SimpleStep ELISA Kits.</p>
アプリケーション	適用あり: ELISA, IA
試験プラットフォーム	Reagents

製品の特性

保存方法

Store at -20°C. Please refer to protocols.

内容	5 x 96 tests
Mouse Von Willebrand Factor 2 Capture Antibody	1 x 50µg
Mouse Von Willebrand Factor 2 Detector Antibody	1 x 12.5µg
Mouse Von Willebrand Factor 2 Lyophilized Protein	1 vial

機能

Important in the maintenance of hemostasis, it promotes adhesion of platelets to the sites of vascular injury by forming a molecular bridge between sub-endothelial collagen matrix and platelet-surface receptor complex GPIb-IX-V. Also acts as a chaperone for coagulation factor VIII, delivering it to the site of injury, stabilizing its heterodimeric structure and protecting it from premature clearance from plasma.

組織特異性

Plasma.

関連疾患

Defects in VWF are the cause of von Willebrand disease (VWD) [MIM:277480]. VWD defines a group of hemorrhagic disorders in which the von Willebrand factor is either quantitatively or qualitatively abnormal resulting in altered platelet function. Symptoms vary depending on severity and disease type but may include prolonged bleeding time, deficiency of factor VIII and impaired platelet adhesion. Type I von Willebrand disease is the most common form and is characterized by partial quantitative plasmatic deficiency of an otherwise structurally and functionally normal Willebrand factor; type II is associated with a qualitative deficiency and functional anomalies of the Willebrand factor; type III is the most severe form and is characterized by total or near-total absence of Willebrand factor in the plasma and cellular compartments, also leading to a profound deficiency of plasmatic factor VIII.

配列類似性

Contains 1 CTCK (C-terminal cystine knot-like) domain.
Contains 4 TIL (trypsin inhibitory-like) domains.
Contains 3 VWFA domains.
Contains 3 VWFC domains.
Contains 4 VWFD domains.

ドメイン

The von Willebrand antigen 2 is required for multimerization of VWF and for its targeting to storage granules.

翻訳後修飾

All cysteine residues are involved in intrachain or interchain disulfide bonds.
N- and O-glycosylated.

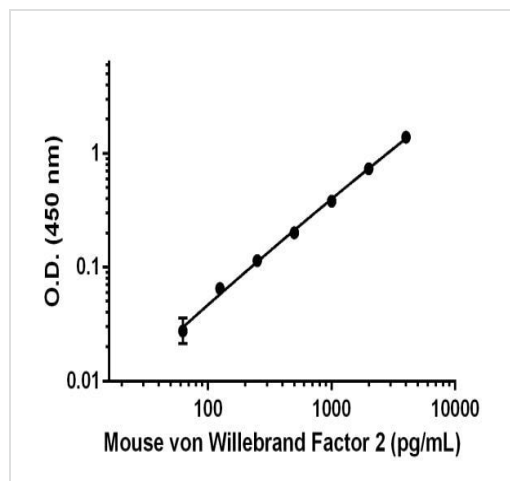
細胞内局在

Secreted. Secreted > extracellular space > extracellular matrix. Localized to storage granules.

アプリケーション**The Abpromise guarantee****Abpromise保証は、**次のテスト済みアプリケーションにおけるab213466の使用に適用されます

アプリケーションノートには、推奨の開始希釈率がありますが、適切な希釈率につきましてはご検討ください。

アプリケーション	Abreviews	特記事項
ELISA		Use at an assay dependent concentration.
IA		Use at an assay dependent concentration.



Standard calibration curve. Background subtracted values are graphed.

Mouse Von Willebrand Factor A2 standard curve.

Powered by
recombinant antibodies

Research with confidence
Consistent and reproducible results

Long-term and scalable supply
Recombinant technology

Success from the first experiment
Confirmed specificity

Ethical standards compliant
Animal-free production

Sandwich ELISA - Mouse Von Willebrand Factor A2
Matched Antibody Pair Kit (ab213466)

To learn more about the advantages of recombinant antibodies see [here](#).

Please note: All products are "FOR RESEARCH USE ONLY. NOT FOR USE IN DIAGNOSTIC PROCEDURES"

Our Abpromise to you: Quality guaranteed and expert technical support

- Replacement or refund for products not performing as stated on the datasheet
- Valid for 12 months from date of delivery
- Response to your inquiry within 24 hours
- We provide support in Chinese, English, French, German, Japanese and Spanish
- Extensive multi-media technical resources to help you
- We investigate all quality concerns to ensure our products perform to the highest standards

If the product does not perform as described on this datasheet, we will offer a refund or replacement. For full details of the Abpromise, please visit <https://www.abcam.co.jp/abpromise> or contact our technical team.

Terms and conditions

- Guarantee only valid for products bought direct from Abcam or one of our authorized distributors