

# Mouse MCP1 Matched Antibody Pair Kit ab210894

リコンビナント

画像数 2

### 製品の概要

---

製品名	Mouse MCP1 Matched Antibody Pair Kit
検出方法	Colorimetric
アッセイタイプ	ELISA set
検出感度	0.15 pg/ml
検出範囲	3.12 pg/ml - 200 pg/ml
種交差性	交差種: Mouse
製品の概要	Mouse MCP1 Matched Antibody Pair Kits include a capture and a biotinylated detector antibody pair, along with a calibrated protein standard, suitable for sandwich ELISA. The Matched Antibody Pair Kit can be used to quantify native and recombinant mouse MCP1.

Optimization of the kit reagents to sample type, immunoassay format or instrumentation may be required. Guidelines for use of this kit in a standard 96-well microplate sandwich ELISA using HRP/TMB system of colorimetric detection is described in this assay procedure for the purposes of quantification.

Protocol information and tips on the use of the Matched Antibody Pair kits for sandwich ELISA can be found on our [website](#). An accessory pack can be purchased which includes buffer reagents required to perform 10 x 96-well plate sandwich ELISAs ([ab210905](#)).

For additional information on the performance of the antibody pair used in this kit, please see our equivalent SimpleStep ELISA kit [ab208979](#). Please note that while the antibody pair is the same provided in the corresponding SimpleStep ELISA Kit, due to differences in their formulation, this antibody pair cannot be used with the consumables provided with our SimpleStep ELISA Kits.

アプリケーション	適用あり: ELISA, IA
試験プラットフォーム	Reagents

### 製品の特性

---

保存方法	Store at -20°C. Please refer to protocols.
------	--

内容	5 x 96 tests
Mouse MCP1 Capture Antibody	1 x 50µg
Mouse MCP1 Detector Antibody	1 x 12.5µg
Mouse MCP1 Lyophilized Protein	1 vial

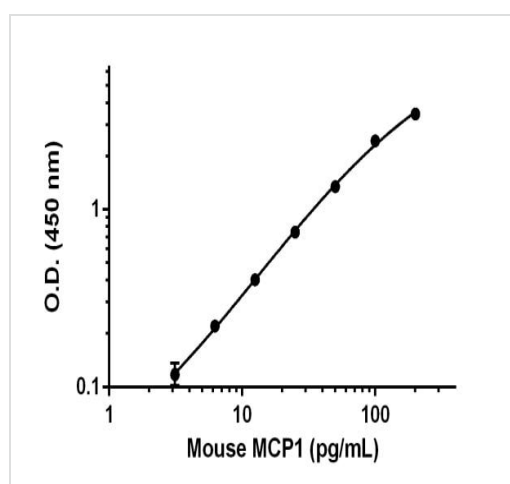
<b>機能</b>	Chemotactic factor that attracts monocytes and basophils but not neutrophils or eosinophils. Augments monocyte anti-tumor activity. Has been implicated in the pathogenesis of diseases characterized by monocytic infiltrates, like psoriasis, rheumatoid arthritis or atherosclerosis. May be involved in the recruitment of monocytes into the arterial wall during the disease process of atherosclerosis.
<b>配列類似性</b>	Belongs to the intercrine beta (chemokine CC) family.
<b>翻訳後修飾</b>	Processing at the N-terminus can regulate receptor and target cell selectivity. Deletion of the N-terminal residue converts it from an activator of basophil to an eosinophil chemoattractant.
<b>細胞内局在</b>	Secreted.

## アプリケーション

**The Abpromise guarantee**      Abpromise保証は、次のテスト済みアプリケーションにおけるab210894の使用に適用されます  
 アプリケーションノートには、推奨の開始希釈率がありますが、適切な希釈率につきましてはご検討ください。

アプリケーション	Abreviews	特記事項
ELISA		Use at an assay dependent concentration.
IA		Use at an assay dependent concentration.

## 画像



Standard calibration curve. Background subtracted values are graphed.

Powered by  
recombinant antibodies



**Research with confidence**  
Consistent and reproducible results



**Long-term and scalable supply**  
Recombinant technology



**Success from the first experiment**  
Confirmed specificity



**Ethical standards compliant**  
Animal-free production

Sandwich ELISA - Mouse MCP1 Matched Antibody  
Pair Kit (ab210894)

To learn more about the advantages of recombinant antibodies see [here](#).

**Please note:** All products are "FOR RESEARCH USE ONLY. NOT FOR USE IN DIAGNOSTIC PROCEDURES"

### Our Abpromise to you: Quality guaranteed and expert technical support

---

- Replacement or refund for products not performing as stated on the datasheet
- Valid for 12 months from date of delivery
- Response to your inquiry within 24 hours
- We provide support in Chinese, English, French, German, Japanese and Spanish
- Extensive multi-media technical resources to help you
- We investigate all quality concerns to ensure our products perform to the highest standards

If the product does not perform as described on this datasheet, we will offer a refund or replacement. For full details of the Abpromise, please visit <https://www.abcam.co.jp/abpromise> or contact our technical team.

### Terms and conditions

---

- Guarantee only valid for products bought direct from Abcam or one of our authorized distributors