

Human/Monkey C Reactive Protein Antibody Pair - BSA and Azide free ab270347

リコンビナント **RabMAb**

画像数 4

製品の概要

製品名	Human/Monkey C Reactive Protein Antibody Pair - BSA and Azide free
アッセイタイプ	ELISA set
検出範囲	18.75 pg/ml - 1200 pg/ml
種交差性	交差種: Human, Cynomolgus monkey, Rhesus monkey
製品の概要	<p>The Antibody Pair can be used to quantify Human/Monkey C Reactive Protein. BSA and Azide free antibody pairs include unconjugated capture and detector antibodies suitable for sandwich ELISAs. The antibodies are provided at an approximate concentration of 1 mg/ml as measured by the protein A280 method. The recommended antibody orientation is based on internal optimization for ELISA-based assays. Antibody orientation is assay dependent and needs to be optimized for each assay type. Both capture and detector antibodies are rabbit monoclonal antibodies delivering consistent, specific, and sensitive results.</p> <p>For additional information on the performance of the antibody pair, see the equivalent SimpleStep ELISA® Kit (ab260058), which uses the same antibodies. However, due to differences in their formulation, this antibody pair cannot be used with the consumables provided with our SimpleStep ELISA Kits. Please note that the range provided for the pairs is only an estimation based on the performance of the related product using the same antibody pair. Performance of the antibody pair will depend on the specific characteristics of your assay. We guarantee the product works in sandwich ELISA, but we do not guarantee the sensitivity or dynamic range of the antibody pair in your assay.</p>
アプリケーション	適用あり: Sandwich ELISA
試験プラットフォーム	Reagents

製品の特性

保存方法	Store at +4°C. Please refer to protocols.
キャリア・フリー	はい

内容	10 x 96 tests
Human/Monkey C Reactive Protein Capture Antibody (unconjugated)	1 x 100µg
Human/Monkey C Reactive Protein Detector Antibody (unconjugated)	1 x 100µg

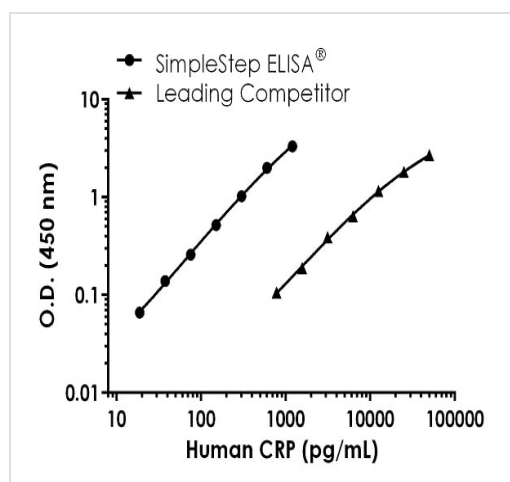
機能	Displays several functions associated with host defense: it promotes agglutination, bacterial capsular swelling, phagocytosis and complement fixation through its calcium-dependent binding to phosphorylcholine. Can interact with DNA and histones and may scavenge nuclear material released from damaged circulating cells.
組織特異性	Found in plasma.
配列類似性	Belongs to the pentaxin family. Contains 1 pentaxin domain.
細胞内局在	Secreted.

アプリケーション

The Abpromise guarantee Abpromise保証は、次のテスト済みアプリケーションにおけるab270347の使用に適用されます
アプリケーションノートには、推奨の開始希釈率がありますが、適切な希釈率につきましてはご検討ください。

アプリケーション	Abreviews	特記事項
Sandwich ELISA		Use at an assay dependent concentration.

画像



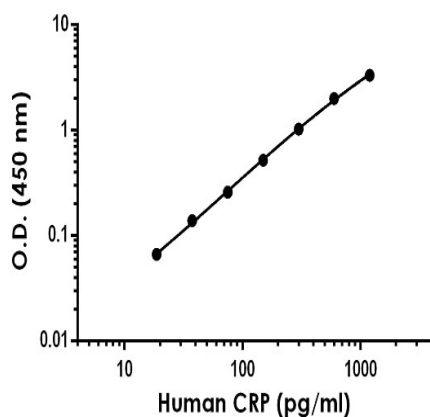
Representative standard curve from corresponding SimpleStep ELISA® Kit ([ab260058](#)), which uses the same antibody pair. For additional information on the performance of pair and kit, refer to the corresponding kit datasheet. Due to differences in the formulation and format of the antibodies in this pair, they cannot be used as substitutes for the antibody components in our SimpleStep ELISA® Kits.

Sandwich ELISA - Human/Monkey C Reactive Protein Antibody Pair - BSA and Azide free (ab270347)

Standard Curve Measurements			
Concentration (pg/mL)	O.D 450 nm		Mean O.D
	1	2	
0	0.064	0.058	0.061
18.75	0.125	0.130	0.127
37.5	0.195	0.205	0.200
75	0.311	0.329	0.320
150	0.578	0.586	0.582
300	1.076	1.103	1.090
600	2.052	2.070	2.061
1200	3.395	3.383	3.389

Sandwich ELISA - Human/Monkey C Reactive
Protein Antibody Pair - BSA and Azide free
(ab270347)

Representative standard curve from corresponding SimpleStep ELISA® Kit ([ab260058](#)), which uses the same antibody pair. For additional information on the performance of pair and kit, refer to the corresponding kit datasheet. Due to differences in the formulation and format of the antibodies in this pair, they cannot be used as substitutes for the antibody components in our SimpleStep ELISA® Kits.



Sandwich ELISA - Human/Monkey C Reactive
Protein Antibody Pair - BSA and Azide free
(ab270347)

Representative standard curve from corresponding SimpleStep ELISA® Kit ([ab260058](#)), which uses the same antibody pair. For additional information on the performance of pair and kit, refer to the corresponding kit datasheet. Due to differences in the formulation and format of the antibodies in this pair, they cannot be used as substitutes for the antibody components in our SimpleStep ELISA® Kits.

Powered by
recombinant antibodies



Research with confidence
Consistent and reproducible results



Long-term and scalable supply
Recombinant technology



Success from the first experiment
Confirmed specificity



Ethical standards compliant
Animal-free production

Sandwich ELISA - Human/Monkey C Reactive
Protein Antibody Pair - BSA and Azide free
(ab270347)

To learn more about the advantages of recombinant antibodies see [here](#).

Please note: All products are "FOR RESEARCH USE ONLY. NOT FOR USE IN DIAGNOSTIC PROCEDURES"

Our Abpromise to you: Quality guaranteed and expert technical support

- Replacement or refund for products not performing as stated on the datasheet
- Valid for 12 months from date of delivery
- Response to your inquiry within 24 hours
- We provide support in Chinese, English, French, German, Japanese and Spanish
- Extensive multi-media technical resources to help you
- We investigate all quality concerns to ensure our products perform to the highest standards

If the product does not perform as described on this datasheet, we will offer a refund or replacement. For full details of the Abpromise, please visit <https://www.abcam.co.jp/abpromise> or contact our technical team.

Terms and conditions

- Guarantee only valid for products bought direct from Abcam or one of our authorized distributors