

Human/Monkey Albumin Antibody Pair - BSA and Azide free ab256595

リコンビナント **RabMAb**

画像数 2

製品の概要

製品名	Human/Monkey Albumin Antibody Pair - BSA and Azide free
アッセイタイプ	ELISA set
検出範囲	0.31 ng/ml - 20 ng/ml
種交差性	交差種: Human, Cynomolgus monkey, Rhesus monkey
製品の概要	<p>The Antibody Pair can be used to quantify Human/Monkey Albumin. BSA and Azide free antibody pairs include unconjugated capture and detector antibodies suitable for sandwich ELISAs. The antibodies are provided at an approximate concentration of 1 mg/ml as measured by the protein A280 method. The recommended antibody orientation is based on internal optimization for ELISA-based assays. Antibody orientation is assay dependent and needs to be optimized for each assay type. Both capture and detector antibodies are rabbit monoclonal antibodies delivering consistent, specific, and sensitive results.</p> <p>For additional information on the performance of the antibody pair, see the equivalent SimpleStep ELISA® Kit (ab179887), which uses the same antibodies. However, due to differences in their formulation, this antibody pair cannot be used with the consumables provided with our SimpleStep ELISA Kits. Please note that the range provided for the pairs is only an estimation based on the performance of the related product using the same antibody pair. Performance of the antibody pair will depend on the specific characteristics of your assay. We guarantee the product works in sandwich ELISA, but we do not guarantee the sensitivity or dynamic range of the antibody pair in your assay.</p>
アプリケーション	適用あり: Sandwich ELISA
試験プラットフォーム	Reagents

製品の特性

保存方法	Store at +4°C. Please refer to protocols.
キャリア・フリー	はい

内容	10 x 96 tests
Human/Monkey Albumin Capture Antibody (unconjugated)	1 x 100µg
Human/Monkey Albumin Detector Antibody (unconjugated)	1 x 100µg

機能	Serum albumin, the main protein of plasma, has a good binding capacity for water, Ca(2+), Na(+), K(+), fatty acids, hormones, bilirubin and drugs. Its main function is the regulation of the colloidal osmotic pressure of blood. Major zinc transporter in plasma, typically binds about 80% of all plasma zinc.
組織特異性	Plasma.
関連疾患	Defects in ALB are a cause of familial dysalbuminemic hyperthyroxinemia (FDH) [MIM:103600]. FDH is a form of euthyroid hyperthyroxinemia that is due to increased affinity of ALB for T(4). It is the most common cause of inherited euthyroid hyperthyroxinemia in Caucasian population.
配列類似性	Belongs to the ALB/AFP/VDB family. Contains 3 albumin domains.
翻訳後修飾	Kenitra variant is partially O-glycosylated at Thr-620. It has two new disulfide bonds Cys-600 to Cys-602 and Cys-601 to Cys-606. Glycated in diabetic patients. Phosphorylation sites are present in the extracellular medium. Acetylated on Lys-223 by acetylsalicylic acid.
細胞内局在	Secreted.

アプリケーション

The Abpromise guarantee **Abpromise保証は、次のテスト済みアプリケーションにおけるab256595の使用に適用されます**
アプリケーションノートには、推奨の開始希釈率がありますが、適切な希釈率につきましてはご検討ください。

アプリケーション	Abreviews	特記事項
Sandwich ELISA		Use at an assay dependent concentration.

画像

Powered by
recombinant antibodies



Research with
confidence
Consistent and
reproducible results



Long-term and
scalable supply
Recombinant
technology



Success from the
first experiment
Confirmed
specificity

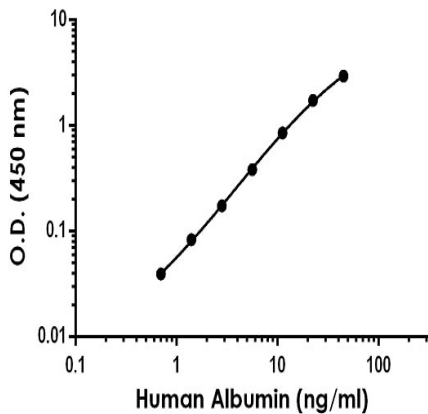


Ethical standards
compliant
Animal-free
production

Sandwich ELISA - Human/Monkey Albumin

Antibody Pair - BSA and Azide free (ab256595)

To learn more about the advantages of recombinant antibodies see [here](#).



Representative Human Albumin standard curve using
sandwich ELISA method

Representative standard curve from corresponding SimpleStep ELISA® Kit ([ab179887](#)), which uses the same antibody pair. For additional information on the performance of pair and kit, refer to the corresponding kit datasheet. Due to differences in the formulation and format of the antibodies in this pair, they cannot be used as substitutes for the antibody components in our SimpleStep ELISA® Kits.

Please note: All products are "FOR RESEARCH USE ONLY. NOT FOR USE IN DIAGNOSTIC PROCEDURES"

Our Abpromise to you: Quality guaranteed and expert technical support

- Replacement or refund for products not performing as stated on the datasheet
- Valid for 12 months from date of delivery
- Response to your inquiry within 24 hours
- We provide support in Chinese, English, French, German, Japanese and Spanish
- Extensive multi-media technical resources to help you
- We investigate all quality concerns to ensure our products perform to the highest standards

If the product does not perform as described on this datasheet, we will offer a refund or replacement. For full details of the Abpromise, please visit <https://www.abcam.co.jp/abpromise> or contact our technical team.

Terms and conditions

- Guarantee only valid for products bought direct from Abcam or one of our authorized distributors