

Human MCP4 Antibody Pair - BSA and Azide free ab244169

リコンビナント RabMAb

画像数 2

製品の概要

|            |   |
|------------|---|
| 製品名        | Human MCP4 Antibody Pair - BSA and Azide free   |
| アッセイタイプ    | ELISA set   |
| 検出範囲       | 3.9 pg/ml - 250 pg/ml   |
| 種交差性       | 交差種: Human  |
| 製品の概要      | <p>The Antibody Pair can be used to quantify Human MCP4. BSA and Azide free antibody pairs include unconjugated capture and detector antibodies suitable for sandwich ELISAs. The antibodies are provided at an approximate concentration of 1 mg/ml as measured by the protein A280 method. The recommended antibody orientation is based on internal optimization for ELISA-based assays. Antibody orientation is assay dependent and needs to be optimized for each assay type. Both capture and detector antibodies are rabbit monoclonal antibodies delivering consistent, specific, and sensitive results.</p> <p>For additional information on the performance of the antibody pair, see the equivalent SimpleStep ELISA® Kit (<a href="#">ab239426</a>), which uses the same antibodies. However, due to differences in their formulation, this antibody pair cannot be used with the consumables provided with our SimpleStep ELISA Kits. Please note that the range provided for the pairs is only an estimation based on the performance of the related product using the same antibody pair. Performance of the antibody pair will depend on the specific characteristics of your assay. We guarantee the product works in sandwich ELISA, but we do not guarantee the sensitivity or dynamic range of the antibody pair in your assay.</p> |
| アプリケーション   | 適用あり: Sandwich ELISA  |
| 試験プラットフォーム | Reagents  |

製品の特性

|          |   |
|----------|---|
| 保存方法     | Store at +4°C. Please refer to protocols. |
| キャリア・フリー | はい  |

| 内容   | 10 x 96 tests |
|--|---------------|
| Human MCP4 Capture Antibody (unconjugated) | 1 x 100µg     |

| 内容  | 10 x 96 tests |
|---|---------------|
| Human MCP4 Detector Antibody (unconjugated) | 1 x 100µg     |

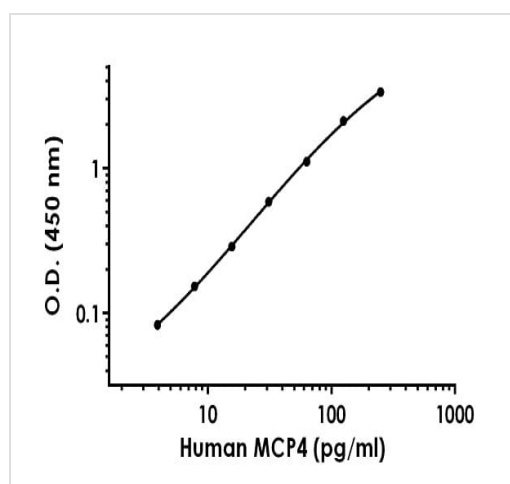
|       |  |
|-------|--|
| 機能    | Chemotactic factor that attracts monocytes, lymphocytes, basophils and eosinophils, but not neutrophils. Signals through CCR2B and CCR3 receptors. Plays a role in the accumulation of leukocytes at both sides of allergic and non-allergic inflammation. May be involved in the recruitment of monocytes into the arterial wall during the disease process of atherosclerosis. May play a role in the monocyte attraction in tissues chronically exposed to exogenous pathogens. |
| 組織特異性 | Widely expressed. Found in small intestine, thymus, colon, lung, trachea, stomach and lymph node. Low levels seen in the pulmonary artery smooth muscle cells.   |
| 配列類似性 | Belongs to the intercrine beta (chemokine CC) family.  |
| 翻訳後修飾 | One major form (form long), and two minor forms (short chain and medium chain) are produced by differential signal peptide cleavage. The medium chain is about 30-fold less active than the long chain.  |
| 細胞内局在 | Secreted.  |

## アプリケーション

**The Abpromise guarantee**      **Abpromise保証は、**次のテスト済みアプリケーションにおけるab244169の使用に適用されます  
アプリケーションノートには、推奨の開始希釈率がありますが、適切な希釈率につきましてはご検討ください。

| アプリケーション       | Abreviews | 特記事項                                     |
|----------------|-----------|--|
| Sandwich ELISA |           | Use at an assay dependent concentration. |

## 画像



Sandwich ELISA - Human MCP4 Antibody Pair -  
BSA and Azide free (ab244169)

Representative standard curve from corresponding SimpleStep ELISA® Kit ([ab239426](#)), which uses the same antibody pair. For additional information on the performance of pair and kit, refer to the corresponding kit datasheet. Due to differences in the formulation and format of the antibodies in this pair, they cannot be used as substitutes for the antibody components in our SimpleStep ELISA® Kits.

Powered by  
recombinant antibodies



**Research with confidence**  
Consistent and reproducible results



**Long-term and scalable supply**  
Recombinant technology



**Success from the first experiment**  
Confirmed specificity



**Ethical standards compliant**  
Animal-free production

Sandwich ELISA - Human MCP4 Antibody Pair -  
BSA and Azide free (ab244169)

To learn more about the advantages of recombinant antibodies see [here](#).

**Please note:** All products are "FOR RESEARCH USE ONLY. NOT FOR USE IN DIAGNOSTIC PROCEDURES"

#### Our Abpromise to you: Quality guaranteed and expert technical support

---

- Replacement or refund for products not performing as stated on the datasheet
- Valid for 12 months from date of delivery
- Response to your inquiry within 24 hours
- We provide support in Chinese, English, French, German, Japanese and Spanish
- Extensive multi-media technical resources to help you
- We investigate all quality concerns to ensure our products perform to the highest standards

If the product does not perform as described on this datasheet, we will offer a refund or replacement. For full details of the Abpromise, please visit <https://www.abcam.co.jp/abpromise> or contact our technical team.

#### Terms and conditions

---

- Guarantee only valid for products bought direct from Abcam or one of our authorized distributors