

# Human Gelsolin Antibody Pair - BSA and Azide free ab253312

リコンビナント

RabMAb

画像数 2

製品の概要

製品名	Human Gelsolin Antibody Pair - BSA and Azide free
アッセイタイプ	ELISA set
検出範囲	546.875 pg/ml - 35000 pg/ml
種交差性	交差種: Human
製品の概要	<p>The Antibody Pair can be used to quantify Human Gelsolin. BSA and Azide free antibody pairs include unconjugated capture and detector antibodies suitable for sandwich ELISAs. The antibodies are provided at an approximate concentration of 1 mg/ml as measured by the protein A280 method. The recommended antibody orientation is based on internal optimization for ELISA-based assays. Antibody orientation is assay dependent and needs to be optimized for each assay type. Both capture and detector antibodies are rabbit monoclonal antibodies delivering consistent, specific, and sensitive results.</p> <p>For additional information on the performance of the antibody pair, see the equivalent SimpleStep ELISA® Kit (<a href="#">ab270215</a>), which uses the same antibodies. However, due to differences in their formulation, this antibody pair cannot be used with the consumables provided with our SimpleStep ELISA Kits. Please note that the range provided for the pairs is only an estimation based on the performance of the related product using the same antibody pair. Performance of the antibody pair will depend on the specific characteristics of your assay. We guarantee the product works in sandwich ELISA, but we do not guarantee the sensitivity or dynamic range of the antibody pair in your assay.</p> <p>Download SDS <a href="#">here</a>.</p>
アプリケーション	適用あり: Sandwich ELISA
試験プラットフォーム	Reagents

製品の特性

保存方法	Store at +4°C. Please refer to protocols.
キャリア・フリー	はい

内容	10 x 96 tests
Human Gelsolin Capture Antibody (unconjugated)	1 x 100µg
Human Gelsolin Detector Antibody (unconjugated)	1 x 100µg

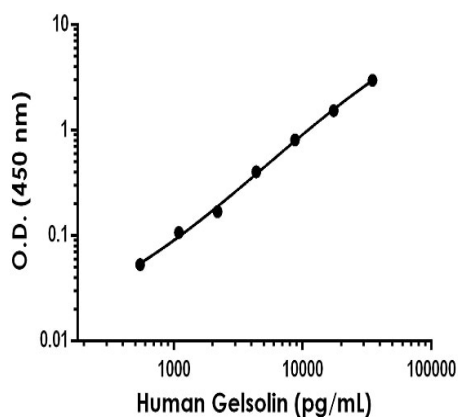
機能	Calcium-regulated, actin-modulating protein that binds to the plus (or barbed) ends of actin monomers or filaments, preventing monomer exchange (end-blocking or capping). It can promote the assembly of monomers into filaments (nucleation) as well as sever filaments already formed. Plays a role in ciliogenesis.
組織特異性	Phagocytic cells, platelets, fibroblasts, nonmuscle cells, smooth and skeletal muscle cells.
関連疾患	Defects in GSN are the cause of amyloidosis type 5 (AMYL5) [MIM:105120]; also known as familial amyloidosis Finnish type. AMYL5 is a hereditary generalized amyloidosis due to gelsolin amyloid deposition. It is typically characterized by cranial neuropathy and lattice corneal dystrophy. Most patients have modest involvement of internal organs, but severe systemic disease can develop in some individuals causing peripheral polyneuropathy, amyloid cardiomyopathy, and nephrotic syndrome leading to renal failure.
配列類似性	Belongs to the villin/gelsolin family. Contains 6 gelsolin-like repeats.
翻訳後修飾	Phosphorylation on Tyr-86, Tyr-409, Tyr-465, Tyr-603 and Tyr-651 in vitro is induced in presence of phospholipids.
細胞内局在	Cytoplasm > cytoskeleton and Secreted.

## アプリケーション

**The Abpromise guarantee**      **Abpromise保証は、次のテスト済みアプリケーションにおけるab253312の使用に適用されます**  
 アプリケーションノートには、推奨の開始希釈率がありますが、適切な希釈率につきましてはご検討ください。

アプリケーション	Abreviews	特記事項
<b>Sandwich ELISA</b>		Use at an assay dependent concentration.

## 画像



Sandwich ELISA - Human Gelsolin Antibody Pair -  
BSA and Azide free (ab253312)

Representative standard curve from corresponding SimpleStep ELISA® Kit ([ab270215](#)), which uses the same antibody pair. For additional information on the performance of pair and kit, refer to the corresponding kit datasheet. Due to differences in the formulation and format of the antibodies in this pair, they cannot be used as substitutes for the antibody components in our SimpleStep ELISA® Kits.

Powered by  
recombinant antibodies



**Research with confidence**  
Consistent and reproducible results



**Long-term and scalable supply**  
Recombinant technology



**Success from the first experiment**  
Confirmed specificity



**Ethical standards compliant**  
Animal-free production

Sandwich ELISA - Human Gelsolin Antibody Pair -  
BSA and Azide free (ab253312)

To learn more about the advantages of recombinant antibodies see [here](#).

**Please note:** All products are "FOR RESEARCH USE ONLY. NOT FOR USE IN DIAGNOSTIC PROCEDURES"

### Our Abpromise to you: Quality guaranteed and expert technical support

- Replacement or refund for products not performing as stated on the datasheet
- Valid for 12 months from date of delivery
- Response to your inquiry within 24 hours
- We provide support in Chinese, English, French, German, Japanese and Spanish
- Extensive multi-media technical resources to help you
- We investigate all quality concerns to ensure our products perform to the highest standards

If the product does not perform as described on this datasheet, we will offer a refund or replacement. For full details of the Abpromise, please visit <https://www.abcam.co.jp/abpromise> or contact our technical team.

## Terms and conditions

---

- Guarantee only valid for products bought direct from Abcam or one of our authorized distributors