

STAT5 A/B pY694/699 ELISA Kit ab176656

SimpleStep ELISA

画像数 5

製品の概要

製品名

STAT5 A/B pY694/699 ELISA Kit

検出方法

Colorimetric

再現性

Intra-Assay (同時再現性)

サンプル	N	平均値	SD	CV%
A431 extract	6			2.8%

Inter-Assay (日差再現性)

サンプル	N	平均値	SD	CV%
A431 extract	3			4%

サンプルの種類

Cell culture extracts, Adherent cells, Suspension cells, Tissue Homogenate

アッセイタイプ

Semi-quantitative

検出感度

< 5 µg/ml

検出範囲

10 µg/ml - 1000 µg/ml

全工程の試験時間

1h 30m

ステップ

One step assay

種交差性

交差種: Human

製品の概要

Abcam's STAT5 A/B (pY694/699) *in vitro* SimpleStep ELISA™ (Enzyme-Linked Immunosorbent Assay) kit is designed for the semi-quantitative measurement of STAT5 A/B (pY694/699) protein in Human cells.

The SimpleStep ELISA™ employs an affinity tag labeled capture antibody and a reporter conjugated detector antibody which immunocapture the sample analyte in solution. This entire complex (capture antibody/analyte/detector antibody) is in turn immobilized via immunoaffinity of an anti-tag antibody coating the well. To perform the assay, samples or standards are added to the wells, followed by the antibody mix. After incubation, the wells are washed to remove unbound material. TMB substrate is added and during incubation is catalyzed by HRP, generating blue

coloration. This reaction is then stopped by addition of Stop Solution completing any color change from blue to yellow. Signal is generated proportionally to the amount of bound analyte and the intensity is measured at 450 nm. Optionally, instead of the endpoint reading, development of TMB can be recorded kinetically at 600 nm

#### 特記事項

Abcam's STAT5 A/B (pY694/699) SimpleStep ELISA kit (ab176656) has been re-developed with new detector antibody. From February 18, 2016 the kit will be delivered with a new detector total STAT5 antibody. This change was necessary because of a decrease in the performance of the polyclonal STAT5 antibody that was previously used for detection in recent production lots. We have identified a new antibody to use in the SimpleStep ELISA platform that provides higher performance.

Abcam has not and does not intend to apply for the REACH Authorisation of customers' uses of products that contain European Authorisation list (Annex XIV) substances.

It is the responsibility of our customers to check the necessity of application of REACH Authorisation, and any other relevant authorisations, for their intended uses.

#### 試験プラットフォーム

Microplate

#### 製品の特性

#### 保存方法

Store at +4°C. Please refer to protocols.

内容	1 x 96 tests	1 x 96 tests
10X Wash Buffer PT	1 x 15ml	1 x 15ml
50X Cell Extraction Enhancer Solution	1 x 1ml	1 x 1ml
5X Cell Extraction Buffer PTR	1 x 12ml	1 x 12ml
Lyophilized STAT5 A/B Control Lysate	1 vial	1 vial
Plate Seal	1 unit	1 unit
SimpleStep Pre-Coated 96-Well Microplate (ab206978)	1 unit	1 unit
STAT5 A/B (pY694/699) Capture Antibody	1 x 3ml	1 x 3ml
STAT5 A/B (pY694/699) Detector Antibody	1 x 3ml	1 x 3ml
Stop Solution	1 x 12ml	1 x 12ml
TMB Substrate	1 x 12ml	1 x 12ml

#### 機能

Carries out a dual function: signal transduction and activation of transcription. Binds to the GAS element and activates PRL-induced transcription.

#### 配列類似性

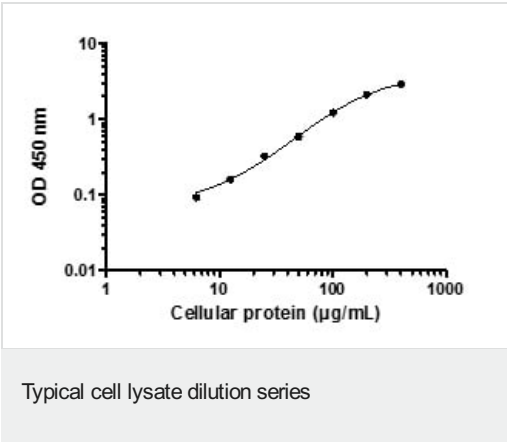
Belongs to the transcription factor STAT family.

Contains 1 SH2 domain.

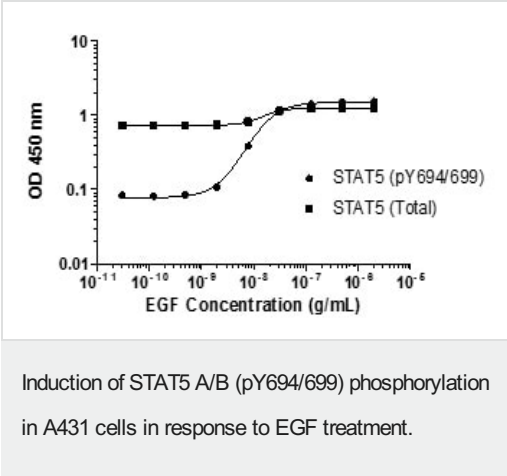
#### 翻訳後修飾

Tyrosine phosphorylated in response to IL-2, IL-3, IL-7, IL-15, GM-CSF, growth hormone, prolactin, erythropoietin and thrombopoietin. Tyrosine phosphorylation is required for DNA-binding activity and dimerization. Serine phosphorylation is also required for maximal transcriptional activity.

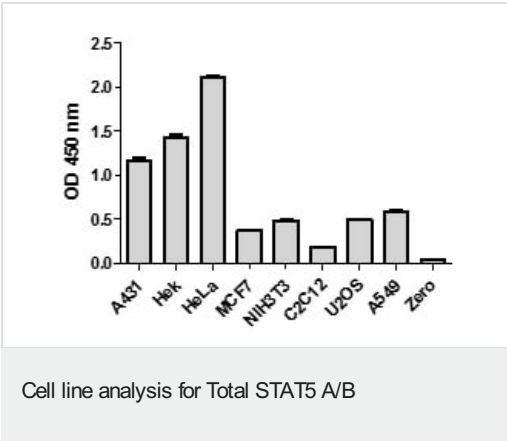
画像



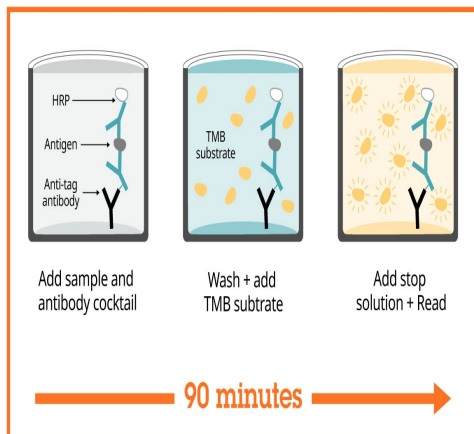
Example of a typical STAT5 A/B (pY694/699) cell lysate dilution series. Background-subtracted data values (mean +/- SD) are graphed.



A431 cells were cultured in 96-well tissue culture plates and treated (15 min) with a dose-range of EGF before cell lysis. Data from quadruplicate measurements of STAT5 A/B (pY694/699) are plotted and compared against Total STAT5 A/B levels.



Cell line analysis for Total STAT5 A/B from 100 µg/mL preparations of cell extracts. Data from triplicate measurements (mean +/- SD) are plotted and compared to 1X Cell Extraction Buffer PTR (zero).



Sandwich ELISA - STAT5 A/B pY694/699 ELISA Kit  
(ab176656)

SimpleStep ELISA technology allows the formation of the antibody-antigen complex in one single step, reducing assay time to 90 minutes. Add samples or standards and antibody mix to wells all at once, incubate, wash, and add your final substrate. See protocol for a detailed step-by-step guide.

#### Get more done with SimpleStep ELISA



**Easy to use**  
Single-wash 90-minute protocol



**Flexible**  
Matched antibody pairs available



**Precision antibodies**  
High sensitivity, specificity and reproducibility



**Scalable**  
Now in 10-pack and 384-well formats

Sandwich ELISA - STAT5 A/B pY694/699 ELISA Kit  
(ab176656)

To learn more about the advantages of SimpleStep ELISA® kits see [here](#).

**Please note:** All products are "FOR RESEARCH USE ONLY. NOT FOR USE IN DIAGNOSTIC PROCEDURES"

#### Our Abpromise to you: Quality guaranteed and expert technical support

- Replacement or refund for products not performing as stated on the datasheet
- Valid for 12 months from date of delivery
- Response to your inquiry within 24 hours
- We provide support in Chinese, English, French, German, Japanese and Spanish

- Extensive multi-media technical resources to help you
- We investigate all quality concerns to ensure our products perform to the highest standards

If the product does not perform as described on this datasheet, we will offer a refund or replacement. For full details of the Abpromise, please visit <https://www.abcam.co.jp/abpromise> or contact our technical team.

#### **Terms and conditions**

---

- Guarantee only valid for products bought direct from Abcam or one of our authorized distributors