

SimpleStep ELISA® Peptide Check Kit ab270053

SimpleStep ELISA

画像数 3

製品の概要

製品名	SimpleStep ELISA® Peptide Check Kit
製品の概要	<p>SimpleStep ELISA® Peptide Check Kit (ab270053) is a quick and simple immunochromatography test that allows you to confirm the successful conjugation of Capture Peptide to your desired antibody without any specialized or costly equipment. This kit has been developed exclusively for the SimpleStep ELISA® Custom ELISA Kit (ab270552) and SimpleStep ELISA® Capture Peptide Conjugation Kit (ab270690).</p> <p>The key component of the kit is a nitrocellulose membrane containing a 'Test line' of Capture Antibody and 40 nm Gold-Capture Antibody conjugate for detection. When the Capture Peptide tagged antibody is mixed with the 40 nm Gold-Capture Antibody conjugate, it forms a complex that flows along the nitrocellulose membrane and binds to the Capture Antibody on the Test line. Two visible red lines on the strip confirm successful conjugation with the SimpleStep ELISA® Capture Peptide Conjugation Kit.</p> <p>Benefits:</p> <p>Quick and easy qualitative test to check success of conjugation with SimpleStep ELISA® Capture Peptide Conjugation Kit (ab270690)</p> <p>Sensitive – range of detection is between 0.1 µg/ml and 1 µg/ml</p> <p>Requires small volumes of conjugate (30 µl)</p> <p>No costly equipment required</p> <p>General notes:</p> <p>This product is manufactured by Expedeon, an Abcam company. It was previously called CaptSure™ Peptide Check&Go!. Expedeon product code 4010-0030 is the same as the 30-test size of this product.</p>

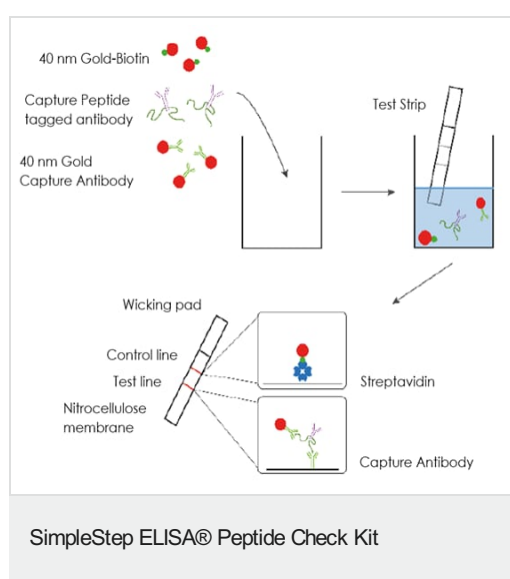
製品の特徴

保存方法

Please refer to protocols.

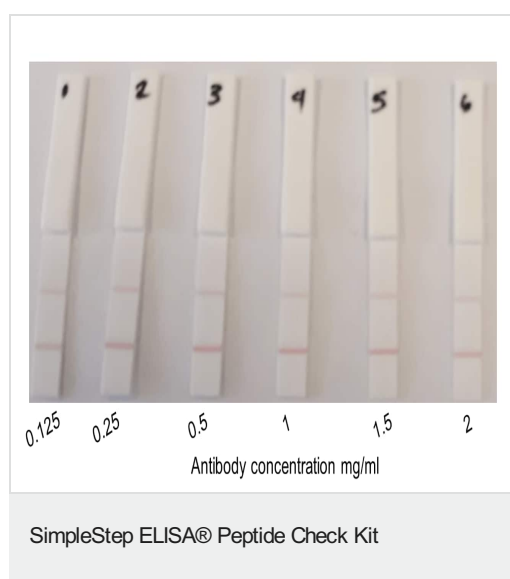
内容	30 tests
ab274095 - Conjugate Mix (10X)	1 vial
ab274094 - Peptide test strips	1 x 30 tests
ab274082 - Running Buffer (10X)	2 x 1500µl

画像

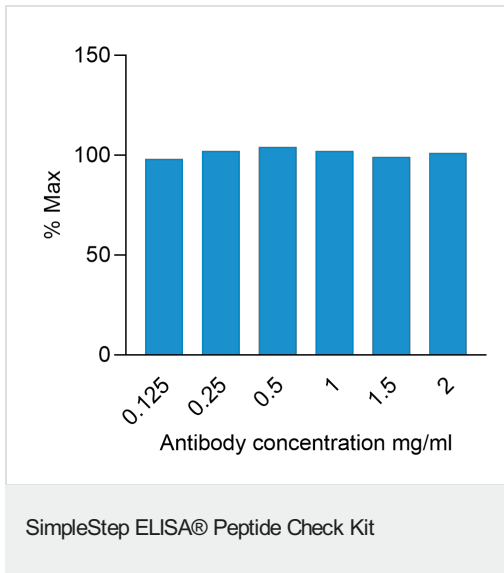


How the kit works

The nitrocellulose membrane contains a 'Test line' of immobilized Capture Antibody and a 'Control line' of immobilized Streptavidin. The test strips also contain an absorbent pad to promote and control the sample flow through the nitrocellulose. The Capture Peptide tagged antibody is run on the nitrocellulose membrane together with Gold conjugated Capture Antibody and Gold conjugated Biotin as the detection labels. The biotin binds to streptavidin and the Capture Antibody binds the Capture Peptide with exceptionally high affinity and specificity. When the gold conjugated Biotin is bound by streptavidin on the C-line and the Peptide tagged antibody is bound by both the antibody on the T-line and Gold conjugated Antibody, two visible red lines appear on the strip.



Antibody at different concentrations (0.125 mg/mL – 2 mg/mL) was conjugated to Peptide and tested on both Assay Plate and Peptide test strips at a final concentration of 0.5 µg/mL. The amount of antibody used for the conjugation does not affect the assays performance.



Antibody at different concentrations (0.125 mg/mL – 2 mg/mL) was conjugated to Peptide and tested on both Assay Plate and Peptide test strips at a final concentration of 0.5 µg/mL. The amount of antibody used for the conjugation does not affect the assays performance.

Please note: All products are "FOR RESEARCH USE ONLY. NOT FOR USE IN DIAGNOSTIC PROCEDURES"

Our Abpromise to you: Quality guaranteed and expert technical support

- Replacement or refund for products not performing as stated on the datasheet
- Valid for 12 months from date of delivery
- Response to your inquiry within 24 hours
- We provide support in Chinese, English, French, German, Japanese and Spanish
- Extensive multi-media technical resources to help you
- We investigate all quality concerns to ensure our products perform to the highest standards

If the product does not perform as described on this datasheet, we will offer a refund or replacement. For full details of the Abpromise, please visit <https://www.abcam.co.jp/abpromise> or contact our technical team.

Terms and conditions

- Guarantee only valid for products bought direct from Abcam or one of our authorized distributors