

Rat MMP3 ELISA Kit ab270216

リコンビナント SimpleStep ELISA®

1 References 画像数 4

製品の概要

製品名	Rat MMP3 ELISA Kit				
検出方法	Colorimetric				
再現性	Intra-Assay (同時再現性)				
	サンプル	N	平均値	SD	CV%
	Serum	8			3%
	Inter-Assay (日差再現性)				
	サンプル	N	平均値	SD	CV%
	Serum	3			3.5%
サンプルの種類	Serum				
アッセイタイプ	Sandwich (quantitative)				
検出感度	42 pg/ml				
検出範囲	273 pg/ml - 17500 pg/ml				
添加回収試験	特定サンプルでの回収試験				
	サンプルの種類		平均 %	測定範囲	
	Serum		90	86% - 93%	
	Hep Plasma		90	88% - 94%	
	Cit plasma		93	89% - 97%	
全工程の試験時間	1h 30m				
ステップ	One step assay				
種交差性	交差種: Rat				
製品の概要	Rat MMP3 ELISA Kit (ab270216) is a single-wash 90 min sandwich ELISA designed for the				

technology. Quantitate Rat MMP3 with 42 pg/ml sensitivity.

SimpleStep ELISA® technology employs capture antibodies conjugated to an affinity tag that is recognized by the monoclonal antibody used to coat our SimpleStep ELISA® plates. This approach to sandwich ELISA allows the formation of the antibody-analyte sandwich complex in a single step, significantly reducing assay time. See the SimpleStep ELISA® protocol summary in the image section for further details. Our SimpleStep ELISA® technology provides several benefits:

- Single-wash protocol reduces assay time to 90 minutes or less
- High sensitivity, specificity and reproducibility from superior antibodies
- Fully validated in biological samples
- 96-wells plate breakable into 12 x 8 wells strips

A 384-well SimpleStep ELISA® microplate (**ab203359**) is available to use as an alternative to the 96-well microplate provided with SimpleStep ELISA® kits.

特記事項

Matrix metalloproteinase-3 (MMP3), also known as Stromelysin-1, is a 54 kD secreted protease involved in the breakdown of extracellular matrix in normal physiological processes, such as embryonic development, reproduction, and tissue remodeling. It also has known roles in disease processes, such as arthritis and cancer metastasis. MMP3 functions by degrading fibronectin, laminin, gelatins of type I, III, IV, and V; collagens III, IV, X, and IX, and cartilage proteoglycans. These actions are linked to activation of procollagenase to further help in the remodeling of the extracellular matrix environment. Rat MMP3 shares 76.2%, 90.2%, and 75.1% sequence homology with human, mouse, and cow, respectively.

試験プラットフォーム

Pre-coated microplate (12 x 8 well strips)

製品の特性

保存方法

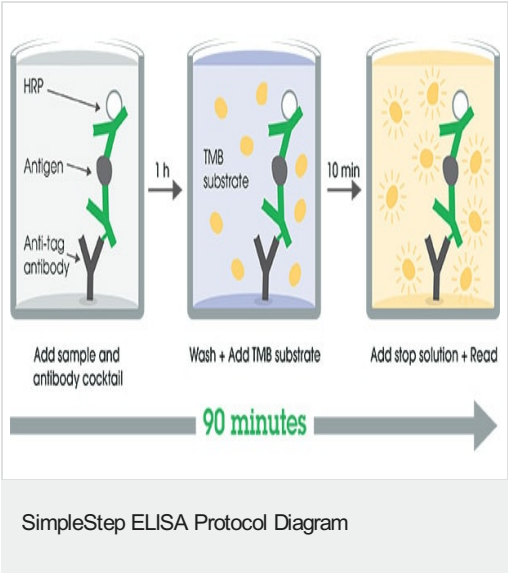
Store at +4°C. Please refer to protocols.

内容	1 x 96 tests
10X Rat MMP3 Capture Antibody	1 x 600µl
10X Rat MMP3 Detector Antibody	1 x 600µl
10X Wash Buffer PT (ab206977)	1 x 20ml
Antibody Diluent 5BR	1 x 6ml
Plate Seals	1 unit
Rat MMP3 Lyophilized Recombinant Protein	2 vials
Sample Diluent NS (ab193972)	1 x 50ml
SimpleStep Pre-Coated 96-Well Microplate (ab206978)	1 unit
Stop Solution	1 x 12ml

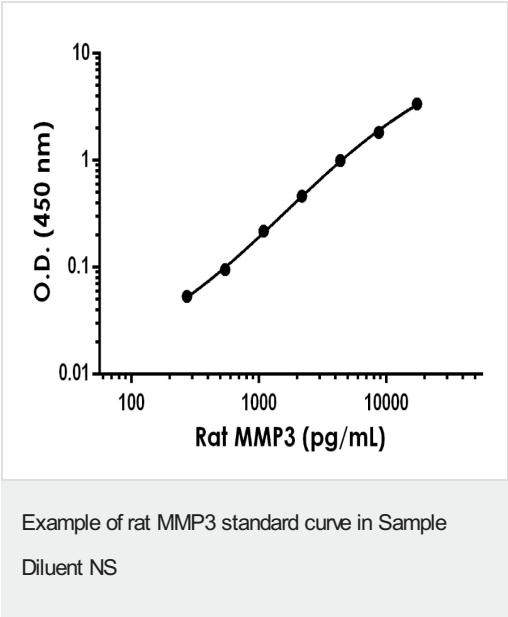
内容	1 x 96 tests
TMB Development Solution	1 x 12ml

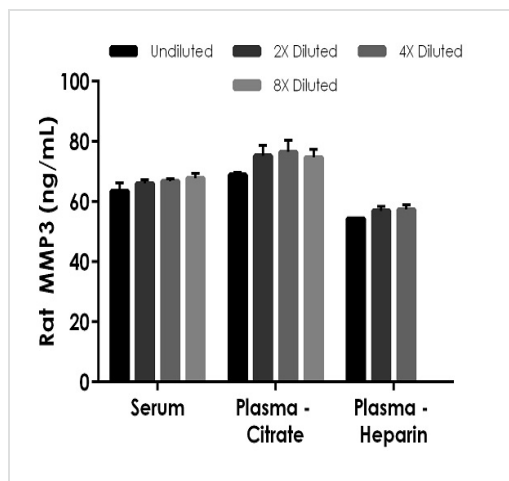
機能	Can degrade fibronectin, laminin, gelatins of type I, III, IV, and V; collagens III, IV, X, and IX, and cartilage proteoglycans. Activates procollagenase.
配列類似性	Belongs to the peptidase M10A family. Contains 4 hemopexin-like domains.
ドメイン	The conserved cysteine present in the cysteine-switch motif binds the catalytic zinc ion, thus inhibiting the enzyme. The dissociation of the cysteine from the zinc ion upon the activation-peptide release activates the enzyme.
細胞内局在	Secreted > extracellular space > extracellular matrix.

画像



SimpleStep ELISA technology allows the formation of the antibody-antigen complex in one single step, reducing assay time to 90 minutes. Add samples or standards and antibody mix to wells all at once, incubate, wash, and add your final substrate. See protocol for a detailed step-by-step guide.





Interpolated concentrations of native MMP3 in rat serum and plasma samples.

The concentrations of MMP3 were measured in duplicates, interpolated from the MMP3 standard curves and corrected for sample dilution. Undiluted samples are as follows: serum 25%, plasma (citrate) 25%, and plasma (heparin) 12.5%. The interpolated dilution factor corrected values are plotted (mean \pm SD, $n=2$). The mean MMP3 concentration was determined to be 66.05 ng/mL in serum, 73.89 ng/mL in plasma (citrate) and 56.23 ng/mL in plasma (heparin).

Powered by
recombinant antibodies

Research with confidence
Consistent and reproducible results

Long-term and scalable supply
Recombinant technology

Success from the first experiment
Confirmed specificity

Ethical standards compliant
Animal-free production

Sandwich ELISA - Rat MMP3 ELISA Kit (ab270216)

To learn more about the advantages of recombinant antibodies see [here](#).

Please note: All products are "FOR RESEARCH USE ONLY. NOT FOR USE IN DIAGNOSTIC PROCEDURES"

Our Abpromise to you: Quality guaranteed and expert technical support

- Replacement or refund for products not performing as stated on the datasheet
- Valid for 12 months from date of delivery
- Response to your inquiry within 24 hours
- We provide support in Chinese, English, French, German, Japanese and Spanish
- Extensive multi-media technical resources to help you
- We investigate all quality concerns to ensure our products perform to the highest standards

If the product does not perform as described on this datasheet, we will offer a refund or replacement. For full details of the Abpromise, please visit <https://www.abcam.co.jp/abpromise> or contact our technical team.

Terms and conditions

- Guarantee only valid for products bought direct from Abcam or one of our authorized distributors