

Rat alpha 2 Macroglobulin ELISA Kit ab157730

2 References 画像数 2

医薬用外毒物

医薬用外劇物

製品の概要

製品名Rat alpha 2 Macroglobulin ELISA Kit

検出方法Colorimetric

再現性	Intra-Assay (同時再現性)				
	サンプル	N	平均値	SD	CV%
	Overall				< 10%
	Inter-Assay (日差再現性)				
	サンプル	N	平均値	SD	CV%
	Overall				< 10%

サンプルの種類Serum, Plasma, Other biological fluids

アッセイタイプSandwich (quantitative)

検出感度2.23 ng/ml

検出範囲6.25 ng/ml - 400 ng/ml

添加回収試験	特定サンプルでの回収試験		
	サンプルの種類	平均 %	測定範囲
	Serum	> 85	% - %

ステップMultiple steps standard assay

種交差性交差種: Rat

製品の概要

Abcam's alpha 2 Macroglobulin Rat ELISA Kit is highly sensitive two-site enzyme linked immunoassay (ELISA) for the quantitative measurement of alpha 2 Macroglobulin in rat biological samples. This kit is specific to the alpha 2 Macroglobulin and will not cross react with the closely related alpha 1 Macroglobulin.

In this assay the alpha 2 Macroglobulin present in samples reacts with the anti-alpha 2 Macroglobulin antibodies which have been adsorbed to the surface of polystyrene microtitre wells. After the removal of unbound proteins by washing, anti-alpha 2 Macroglobulin antibodies conjugated with horseradish peroxidase (HRP) are added. These enzyme-labeled antibodies form complexes

with the previously bound alpha 2 Macroglobulin. Following another washing step, the enzyme bound to the immunosorbent is assayed by the addition of a chromogenic substrate, 3,3',5,5'-tetramethylbenzidine (TMB). The quantity of bound enzyme varies directly with the concentration of alpha 2 Macroglobulin in the sample tested; thus, the absorbance, at 450 nm, is a measure of the concentration of alpha 2 Macroglobulin in the test sample. The quantity of alpha 2 Macroglobulin in the test sample can be interpolated from the standard curve constructed from the standards, and corrected for sample dilution

試験プラットフォーム

Microplate

製品の特性

保存方法

Store at +4°C. Please refer to protocols.

内容	1 x 96 tests
100X HRP-conjugated anti-rat alpha 2 Macroglobulin antibody	1 x 150µl
20X Wash Buffer Concentrate	1 x 50ml
5X Diluent Concentrate	1 x 50ml
Chromogen Substrate Solution	1 x 12ml
Rat alpha 2 Macroglobulin Calibrator (lyophilized)	1 vial
Rat alpha 2 Macroglobulin ELISA Microplate	1 unit
Stop Solution	1 x 12ml

機能

Is able to inhibit all four classes of proteinases by a unique 'trapping' mechanism. This protein has a peptide stretch, called the 'bait region' which contains specific cleavage sites for different proteinases. When a proteinase cleaves the bait region, a conformational change is induced in the protein which traps the proteinase. The entrapped enzyme remains active against low molecular weight substrates (activity against high molecular weight substrates is greatly reduced). Following cleavage in the bait region a thioester bond is hydrolyzed and mediates the covalent binding of the protein to the proteinase.

組織特異性

Secreted in plasma.

配列類似性

Belongs to the protease inhibitor I39 (alpha-2-macroglobulin) family.

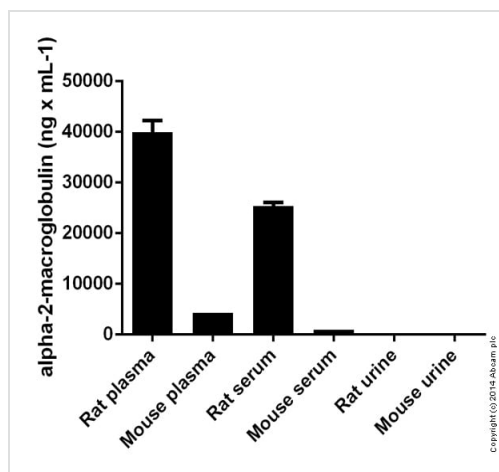
発生段階

Contrary to the rat protein, which is an acute phase protein, this protein is always present at high levels in circulation.

細胞内局在

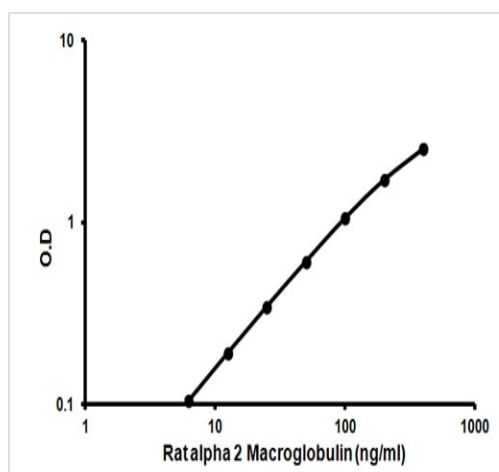
Secreted.

画像



alpha-2-macroglobulin measured in various samples showing quantitie (ng) per mL of tested sample

Sandwich ELISA - ab157730 alpha 2 Macroglobulin
Rat Elisa kit



Representative standard curve using ab157730 alpha 2 Macroglobulin Rat ELISA Kit.

Standard Curve

Please note: All products are "FOR RESEARCH USE ONLY. NOT FOR USE IN DIAGNOSTIC PROCEDURES"

Our Abpromise to you: Quality guaranteed and expert technical support

- Replacement or refund for products not performing as stated on the datasheet
- Valid for 12 months from date of delivery
- Response to your inquiry within 24 hours
- We provide support in Chinese, English, French, German, Japanese and Spanish
- Extensive multi-media technical resources to help you
- We investigate all quality concerns to ensure our products perform to the highest standards

If the product does not perform as described on this datasheet, we will offer a refund or replacement. For full details of the Abpromise, please visit <https://www.abcam.co.jp/abpromise> or contact our technical team.

Terms and conditions

- Guarantee only valid for products bought direct from Abcam or one of our authorized distributors