

Pig IL-13 ELISA Kit ab272467

リコンビナント SimpleStep ELISA

画像数 5

製品の概要

製品名	Pig IL-13 ELISA Kit
検出方法	Colorimetric
再現性	Intra-Assay (同時再現性)

サンプル	N	平均値	SD	CV%
Serum	8			4.5%

サンプル	N	平均値	SD	CV%
Serum	3			2.6%

サンプルの種類	Serum, Cell culture media, Hep Plasma, EDTA Plasma, Cit plasma
アッセイタイプ	Sandwich (quantitative)
検出感度	5.45 pg/ml
検出範囲	18.8 pg/ml - 1200 pg/ml
添加回収試験	特定サンプルでの回収試験

サンプルの種類	平均 %	測定範囲
Serum	89	86% - 90%
Cell culture media	96	94% - 98%
Hep Plasma	90	86% - 92%
EDTA Plasma	80	77% - 84%
Cit plasma	75	72% - 77%

全工程の試験時間	1h 30m
ステップ	One step assay

種交差性

交差種: Pig

製品の概要

Pig IL-13 ELISA kit (ab272467) is a single-wash 90 min sandwich ELISA designed for the quantitative measurement of Pig IL-13 protein in serum, plasma and cell culture media. It uses our proprietary SimpleStep ELISA® technology. Quantitate Pig IL-13 with 5.5 pg/mL sensitivity.

SimpleStep ELISA® technology employs capture antibodies conjugated to an affinity tag that is recognized by the monoclonal antibody used to coat our SimpleStep ELISA® plates. This approach to sandwich ELISA allows the formation of the antibody-analyte sandwich complex in a single step, significantly reducing assay time. See the SimpleStep ELISA® protocol summary in the image section for further details. Our SimpleStep ELISA® technology provides several benefits:

- Single-wash protocol reduces assay time to 90 minutes or less
- High sensitivity, specificity and reproducibility from superior antibodies
- Fully validated in biological samples
- 96-wells plate breakable into 12 x 8 wells strips

A 384-well SimpleStep ELISA® microplate ([ab203359](#)) is available to use as an alternative to the 96-well microplate provided with SimpleStep ELISA® kits.

特記事項

Interleukin-13 (IL-13) is a secreted immunoregulatory cytokine in the IL-4/IL-13 family that is linked to allergic reactions and cancer pathogenesis. IL-13 inhibits inflammatory cytokine production and promotes immunoglobulin class switching on B-cells. IL-13 is linked to allergic rhinitis, a common disease of complex inheritance characterized by mucosal inflammation caused by allergen exposure.

試験プラットフォーム

Pre-coated microplate (12 x 8 well strips)

製品の特性

保存方法

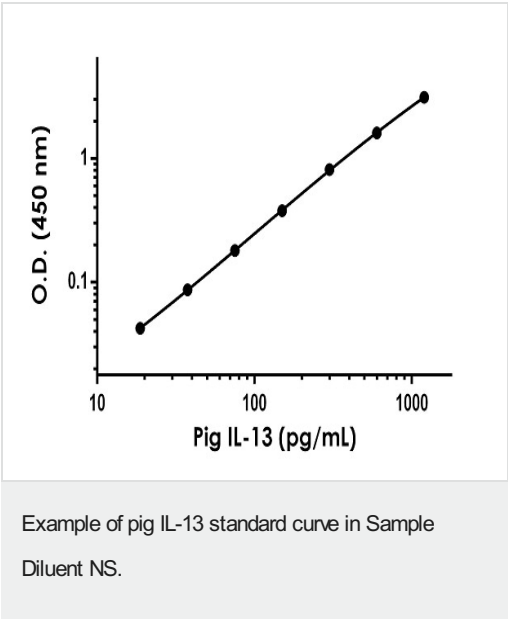
Store at +4°C. Please refer to protocols.

内容	1 x 96 tests
10X Pig IL-13 Capture Antibody	1 x 600µl
10X Pig IL-13 Detector Antibody	1 x 600µl
10X Wash Buffer PT (ab206977)	1 x 20ml
Antibody Diluent 5BI	1 x 6ml
Pig IL-13 Lyophilized Recombinant Protein	2 vials
Plate Seals	1 unit
Sample Diluent NS (ab193972)	1 x 50ml

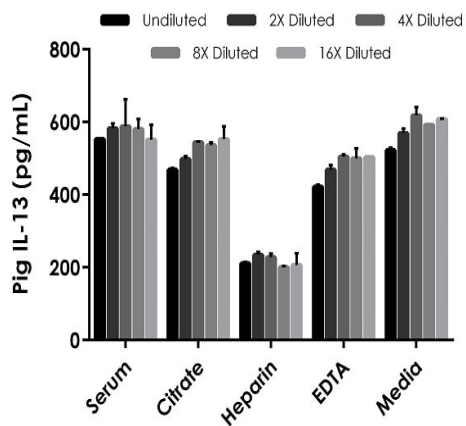
内容	1 x 96 tests
SimpleStep Pre-Coated 96-Well Microplate (ab206978)	1 unit
Stop Solution	1 x 12ml
TMB Development Solution	1 x 12ml

機能	Cytokine (PubMed:8096327, PubMed:8097324). Inhibits inflammatory cytokine production (PubMed:8096327). Synergizes with IL2 in regulating interferon-gamma synthesis (PubMed:8096327). May be critical in regulating inflammatory and immune responses (PubMed:8096327, PubMed:8097324). Positively regulates IL31RA expression in macrophages.
関連疾患	Allergic rhinitis
配列類似性	Belongs to the IL-4/IL-13 family.
細胞内局在	Secreted.

画像

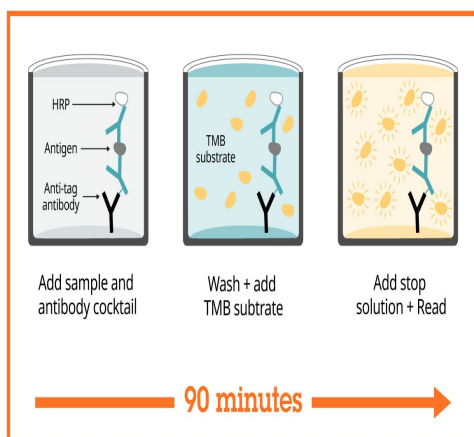


The IL-13 standard curve was prepared as described in Section 10. Raw data values are shown in the table. Background-subtracted data values (mean +/- SD) are graphed.



Interpolated concentrations of spike IL-13 in pig serum, plasma, and cell culture media.

The concentrations of IL-13 were measured in duplicates, interpolated from the target standard curves and corrected for sample dilution. Undiluted samples are as follows: serum 50%, plasma (citrate) 50%, plasma (heparin) 25%, plasma (EDTA) 50%, and cell culture media (RPMI 1640 containing 10% fetal bovine serum) 100%. The interpolated dilution factor corrected values are plotted (mean \pm SD, $n=2$).



Sandwich ELISA - Pig IL-13 ELISA Kit (ab272467)

SimpleStep ELISA technology allows the formation of the antibody-antigen complex in one single step, reducing assay time to 90 minutes. Add samples or standards and antibody mix to wells all at once, incubate, wash, and add your final substrate. See protocol for a detailed step-by-step guide.

Powered by
recombinant antibodies



Research with confidence
Consistent and reproducible results



Long-term and scalable supply
Recombinant technology



Success from the first experiment
Confirmed specificity



Ethical standards compliant
Animal-free production

Sandwich ELISA - Pig IL-13 ELISA Kit (ab272467)

To learn more about the advantages of recombinant antibodies see [here](#).

**Get more done with
SimpleStep ELISA**



Easy to use
Single-wash 90-minute protocol



Flexible
Matched antibody pairs available



Precision antibodies
High sensitivity, specificity and reproducibility



Scalable
Now in 10-pack and 384-well formats

Sandwich ELISA - Pig IL-13 ELISA Kit (ab272467)

To learn more about the advantages of SimpleStep ELISA® kits see [here](#).

Please note: All products are "FOR RESEARCH USE ONLY. NOT FOR USE IN DIAGNOSTIC PROCEDURES"

Our Abpromise to you: Quality guaranteed and expert technical support

- Replacement or refund for products not performing as stated on the datasheet
- Valid for 12 months from date of delivery
- Response to your inquiry within 24 hours
- We provide support in Chinese, English, French, German, Japanese and Spanish
- Extensive multi-media technical resources to help you
- We investigate all quality concerns to ensure our products perform to the highest standards

If the product does not perform as described on this datasheet, we will offer a refund or replacement. For full details of the Abpromise, please visit <https://www.abcam.co.jp/abpromise> or contact our technical team.

Terms and conditions

- Guarantee only valid for products bought direct from Abcam or one of our authorized distributors