

Mouse VEGF R3 ELISA Kit (FLT4) ab203367

リコンビナント SimpleStep ELISA

画像数 6

製品の概要

製品名	Mouse VEGF R3 ELISA Kit (FLT4)
検出方法	Colorimetric
再現性	Intra-Assay (同時再現性)

サンプル	N	平均値	SD	CV%
Overall	8			4.59%

サンプル	N	平均値	SD	CV%
Overall	3			7.14%

サンプルの種類	Cell culture supernatant, Serum, Hep Plasma, EDTA Plasma, Cit plasma
アッセイタイプ	Sandwich (quantitative)
検出感度	17.97 pg/ml
検出範囲	46.9 pg/ml - 3000 pg/ml
添加回収試験	特定サンプルでの回収試験

サンプルの種類	平均 %	測定範囲
Serum	85	81% - 88%
Cell culture media	87	87% - 88%
Hep Plasma	99	95% - 101%
EDTA Plasma	100	96% - 104%
Cit plasma	103	101% - 107%

全工程の試験時間	1h 30m
ステップ	One step assay

種交差性

交差種: Mouse

非交差種: Cow, Pig

製品の概要

Mouse VEGF R3 ELISA Kit (FLT4) (ab203367) is a single-wash 90 min sandwich ELISA designed for the quantitative measurement of VEGF R3 (FLT4) protein in cell culture supernatant, cit plasma, edta plasma, hep plasma, and serum. It uses our proprietary SimpleStep ELISA® technology. Quantitate Mouse VEGF R3 (FLT4) with 17.97 pg/ml sensitivity.

SimpleStep ELISA® technology employs capture antibodies conjugated to an affinity tag that is recognized by the monoclonal antibody used to coat our SimpleStep ELISA® plates. This approach to sandwich ELISA allows the formation of the antibody-analyte sandwich complex in a single step, significantly reducing assay time. See the SimpleStep ELISA® protocol summary in the image section for further details. Our SimpleStep ELISA® technology provides several benefits:

- Single-wash protocol reduces assay time to 90 minutes or less
- High sensitivity, specificity and reproducibility from superior antibodies
- Fully validated in biological samples
- 96-wells plate breakable into 12 x 8 wells strips

A 384-well SimpleStep ELISA® microplate (**ab203359**) is available to use as an alternative to the 96-well microplate provided with SimpleStep ELISA® kits.

特記事項

The VEGF receptor family includes three members VEGF R1, VEGF R2, and VEGF R3 (FLT4). These receptors have a characteristic structure that includes 7 Ig-like domains in the extracellular domain and a cytoplasmic tyrosine kinase domain with a long kinase insert region. VEGF R3 is a tyrosine protein kinase that acts as a cell-surface receptor for VEGFC and VEGFD. It plays an essential role in adult lymphangiogenesis, and in the development of the vascular network and cardiovascular system during embryonic development. VEGF R3 promotes proliferation, survival and migration of endothelial cells, and regulates angiogenic sprouting. Signaling by activated VEGF R3 leads to enhanced production of VEGFC and VEGFA, creating a positive feedback loop that enhances FLT4 signaling.

試験プラットフォーム

Pre-coated microplate (12 x 8 well strips)

製品の特性

保存方法

Store at +4°C. Please refer to protocols.

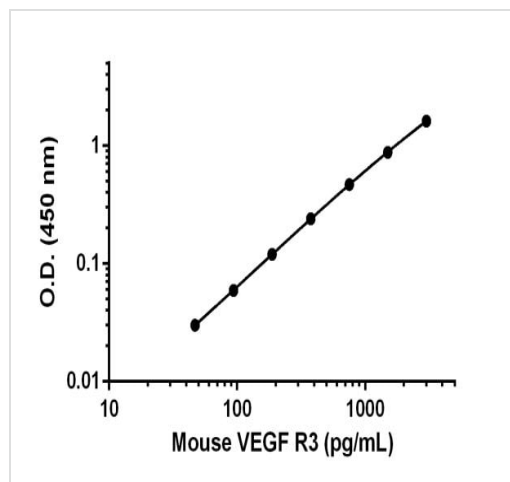
内容	1 x 96 tests
10X Mouse VEGF R3 Capture Antibody	1 x 600µl
10X Mouse VEGF R3 Detector Antibody	1 x 600µl
10X Wash Buffer PT (ab206977)	1 x 20ml
Antibody Diluent CP2	1 x 6ml
Mouse VEGF R3 Lyophilized Recombinant Protein	2 vials

内容	1 x 96 tests
Plate Seals	1 unit
Sample Diluent NS (ab193972)	1 x 50ml
SimpleStep Pre-Coated 96-Well Microplate (ab206978)	1 unit
Stop Solution	1 x 12ml
TMB Development Solution	1 x 12ml

関連性 Vascular endothelial growth factors (VEGFs) are a family of closely related growth factors having a conserved pattern of eight cysteine residues and sharing common VEGF receptors. VEGFs stimulate the proliferation of endothelial cells, induce angiogenesis, and increase vascular permeability in both large and small vessels. The mitogenic activity of VEGFs appears to be mediated by specific VEGF receptors. VEGF Receptor 3 is one of the five receptor tyrosine kinases (RTKs) (VEGF Receptor 1/Flt1, VEGF Receptor 2/KDR/Flk1, VEGF Receptor 3/Flt4, tie1 and tek/tie2) whose expression is almost exclusively restricted to endothelial cells.

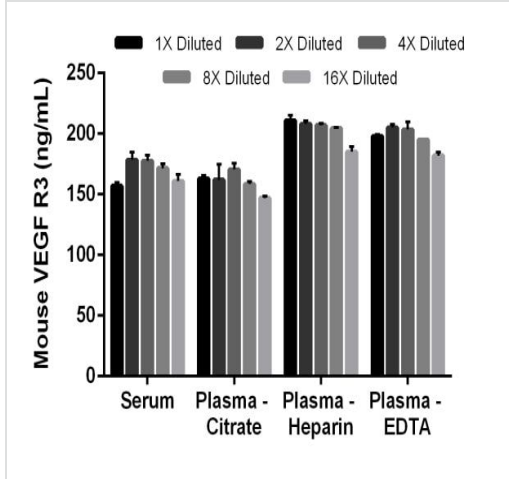
細胞内局在 Cell membrane; Single-pass type I membrane protein.

画像



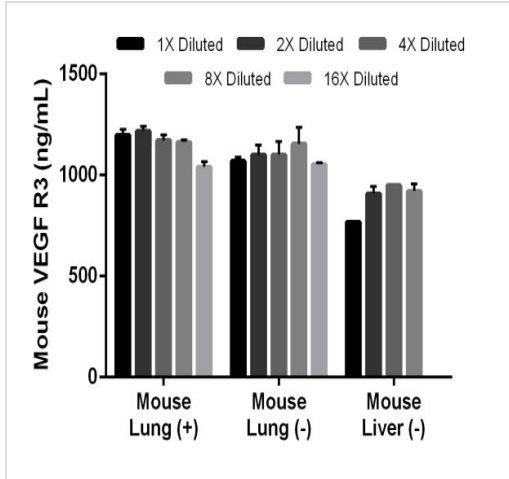
Background-subtracted data values (mean \pm SD) are graphed.

Example of VEGF R3 standard curve.



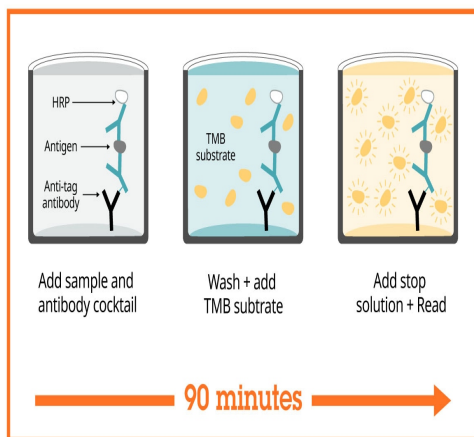
The 1X dilution is 5% for mouse serum, and 2.5% for each of the plasmas. Interpolated data values (mean \pm SD, $n = 2$) are graphed.

Titration of mouse serum, citrate plasma, heparin plasma, and EDTA plasma within the working range of the assay.



The 1X dilution is 50.0% for the lung supernatants, and 25.0% for the liver supernatant. Interpolated data values (mean \pm SD, $n = 2$) are graphed.

Titration of mouse stimulated (100 ng/mL LPS + 50 ng/mL PMA, 3 days (+)) lung supernatant, and unstimulated (-) lung and liver cell culture supernatants within the working range of the assay.



Sandwich ELISA - Mouse VEGF R3 ELISA Kit
(FLT4) (ab203367)

SimpleStep ELISA technology allows the formation of the antibody-antigen complex in one single step, reducing assay time to 90 minutes. Add samples or standards and antibody mix to wells all at once, incubate, wash, and add your final substrate. See protocol for a detailed step-by-step guide.

Powered by
recombinant antibodies



Research with confidence
Consistent and reproducible results



Long-term and scalable supply
Recombinant technology



Success from the first experiment
Confirmed specificity



Ethical standards compliant
Animal-free production

Sandwich ELISA - Mouse VEGF R3 ELISA Kit
(FLT4) (ab203367)

To learn more about the advantages of recombinant antibodies see [here](#).

**Get more done with
SimpleStep ELISA**



Easy to use
Single-wash 90-minute
protocol



Flexible
Matched antibody pairs
available



Precision antibodies
High sensitivity, specificity
and reproducibility



Scalable
Now in 10-pack and
384-well formats

Sandwich ELISA - Mouse VEGF R3 ELISA Kit
(FLT4) (ab203367)

To learn more about the advantages of SimpleStep ELISA® kits
see [here](#).

Please note: All products are "FOR RESEARCH USE ONLY. NOT FOR USE IN DIAGNOSTIC PROCEDURES"

Our Abpromise to you: Quality guaranteed and expert technical support

- Replacement or refund for products not performing as stated on the datasheet
- Valid for 12 months from date of delivery
- Response to your inquiry within 24 hours
- We provide support in Chinese, English, French, German, Japanese and Spanish
- Extensive multi-media technical resources to help you
- We investigate all quality concerns to ensure our products perform to the highest standards

If the product does not perform as described on this datasheet, we will offer a refund or replacement. For full details of the Abpromise, please visit <https://www.abcam.co.jp/abpromise> or contact our technical team.

Terms and conditions

- Guarantee only valid for products bought direct from Abcam or one of our authorized distributors